

Addendum 1

37-15OCT13 - Boone County Walnut Office

Columbia, MO

September 30, 2013 Prebid Meeting / Addendum #1

Issued October 2, 2013

Attending	Company	Phone
Dan Peth Jody Miller	Simon Associates Inc.	573-874-1818
CJ Dykhouse Bob Davidson Karen Miller Melinda Bobbitt	Boone County	573-886-4414 573-886-4401 573-886-4391
Kristin Worthington	Grove Construction	573-777-9599
Gayle Morris	McAfee Construction	573-474-4397
Steve Buhr	Wavco	573-893-4880
Wayne Martin	Maverick Construction	636-462-1392
Christopher Perez Jim B.	Blu Sky Restoration	913-749-2525 913-475-5997
Steven Werder	Glov Con	573-642-6363
Dennis Baysinger	Schneider Electric	573-636-4101
Mark Schutte	Star Heating & A/C	573-449-3784
Emmanuel Ebong Boyd Lipe	Belfor Property Group	913-549-2369 816-918-5825
Tony Adams	Belfor Restoration	913-530-1542
Cody Gerdes	River City Const.	573-657-7380
Alan Smith	GBH Builders	573-893-3633
Mark Canine	Missouri Restoration	573-474-1788
Bill Patterson	Sircal Contracting	573-893-5977

Attending	Company	Phone
Brian Fischer	Weathercraft Inc	573-635-0141
Brett Dudenhoeffer	United HRB	573-635-9155

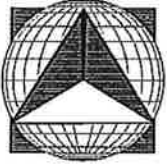
The following items were discussed in the prebid meeting. The contract documents are amended as follows:

1. This project is permitted through Boone County Resource Management. Permit fees DO APPLY for this project. All sidewalk and road closures are through the City of Columbia. On-street parking / permits will be coordinated by the Contractor with the City of Columbia.
2. If any contractors that attended the pre bid would like to regain entry to the building, please contact Bob Davidson at 573-886-4401.
3. The owner emphasized that no late bids will be accepted.
4. Please note on page 4.3 of the specification book under Bidding Guidelines that all questions shall be submitted in writing to Dan Peth (dpeth@simonassoc.net) by 4:00 pm on October 8, 2013.
5. Note the following changes to the Spec Book:
 - a. Carpet tile shall be Lees, Photofinish, 118 Silverstone, Quarterturn
 - b. Ceramic Tile shall be Crossville, Now, Sand, 18"x18"
 - c. Wall paint shall be Eggshell Latex, Match to Benjamin Moore, Baby Fawn, OC-15
 - d. Trim shall be Benjamin Moore, Blue Spruce, BM 1637
6. In the effort to completely remove the smoke smell from the building, once all existing material noted to be removed has been removed, the contractor shall scrub / clean the existing walls and slab with a degreaser detergent. Once cleaned, seal the existing masonry walls with Kilz or approved equal and seal the floor slab with SureSeal by Mohawk Group or approved equal. Install per manufacturer requirements.
7. The project shall be phased such that after demo and cleaning Corridor 111, Stair 113, and Foyer 114 shall be constructed to allow for the owner occupancy of 605 Walnut during the remainder of construction.
8. Note that the locations shown on the architectural sheets to have electric strikes are correct.
9. See revised MEP sheets attached noting revisions to IT Closet.
10. All appliances are by Owner.
11. Demo and replace all exterior soffit at canopies and above windows.
12. See attached architectural drawing revision pertaining to the relocation of the new wall in the hallway of 605 Walnut.

With no additional business the meeting adjourned.

Prepared by:
Simon Associates Inc.

NORTH ARROW

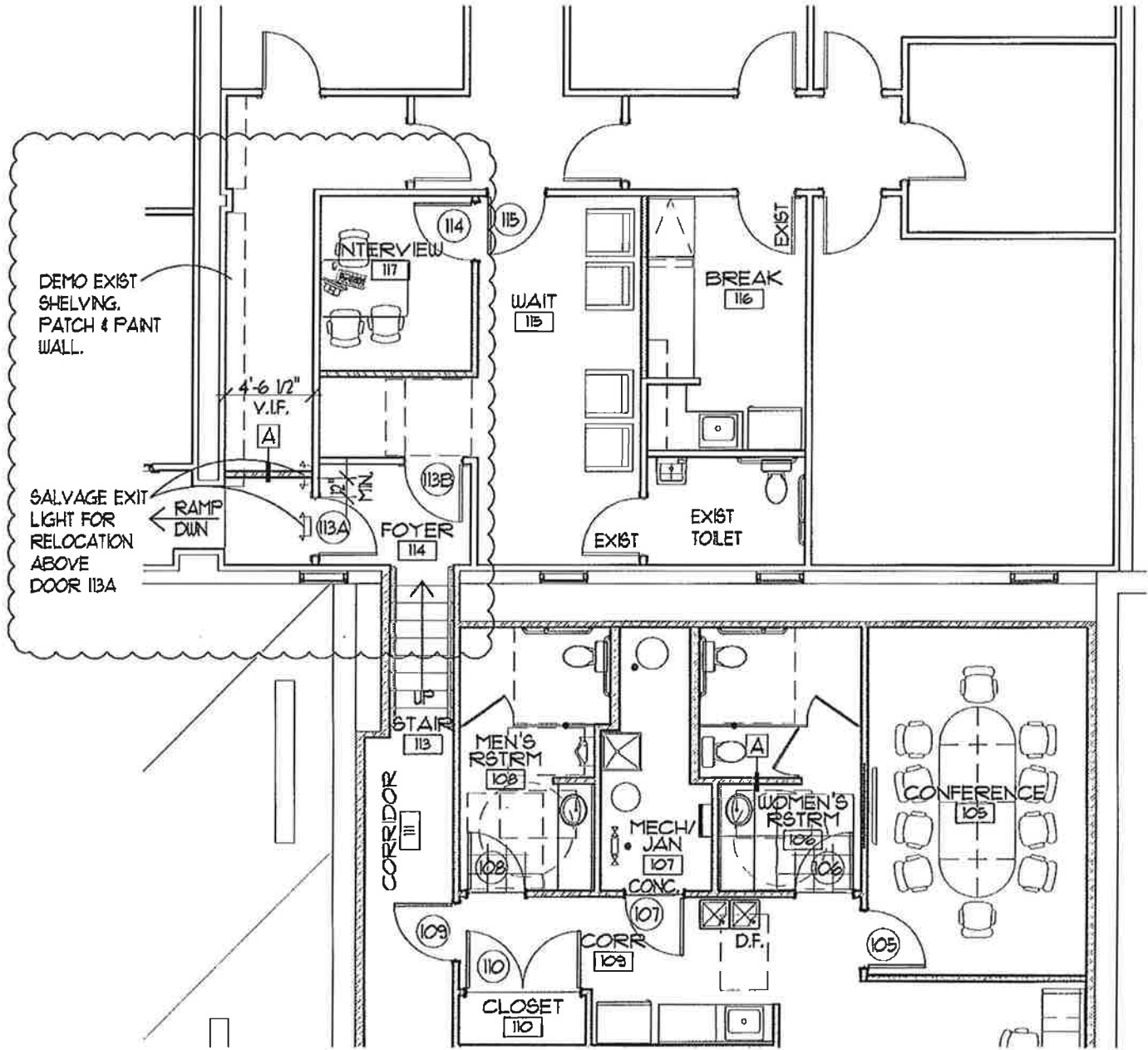


BOONE COUNTY WALNUT OFFICE

|||||

609 E. WALNUT

COLUMBIA, MISSOURI



1
ADD

605 WALNUT PLAN REVISION

SCALE: 1/8"=1'-0"



REVISIONS:

SIMON ASSOCIATES INC.

||||| ARCHITECTURE |||||

13 South Sixth Street Columbia, Missouri Phone: 573-874-1010 Fax: 573-489-8887

THIS DOCUMENT IS THE PROPERTY OF THE ARCHITECT AND MAY NOT BE REPRODUCED

DATE ISSUED: 10 / 02 / 13

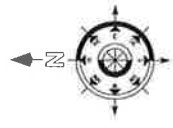
DESIGNERS ASSUME THE ACCURACY OF THE INFORMATION PROVIDED AND MAY NOT BE HELD RESPONSIBLE FOR ANY ERRORS OR OMISSIONS IN THE DESIGN OR CONSTRUCTION OF THE PROJECT WITHOUT THE WRITTEN PERMISSION OF TIMBERLAKE ENGINEERING.

DO NOT SCALE THE DRAWING.

NO LIABILITY FOR DAMAGE TO PROPERTY OR PERSONS FROM SCALE MAY OCCUR.

REVISIONS	DATE
1. MODIFIED CLOSET VENTILATION	3-27-2011

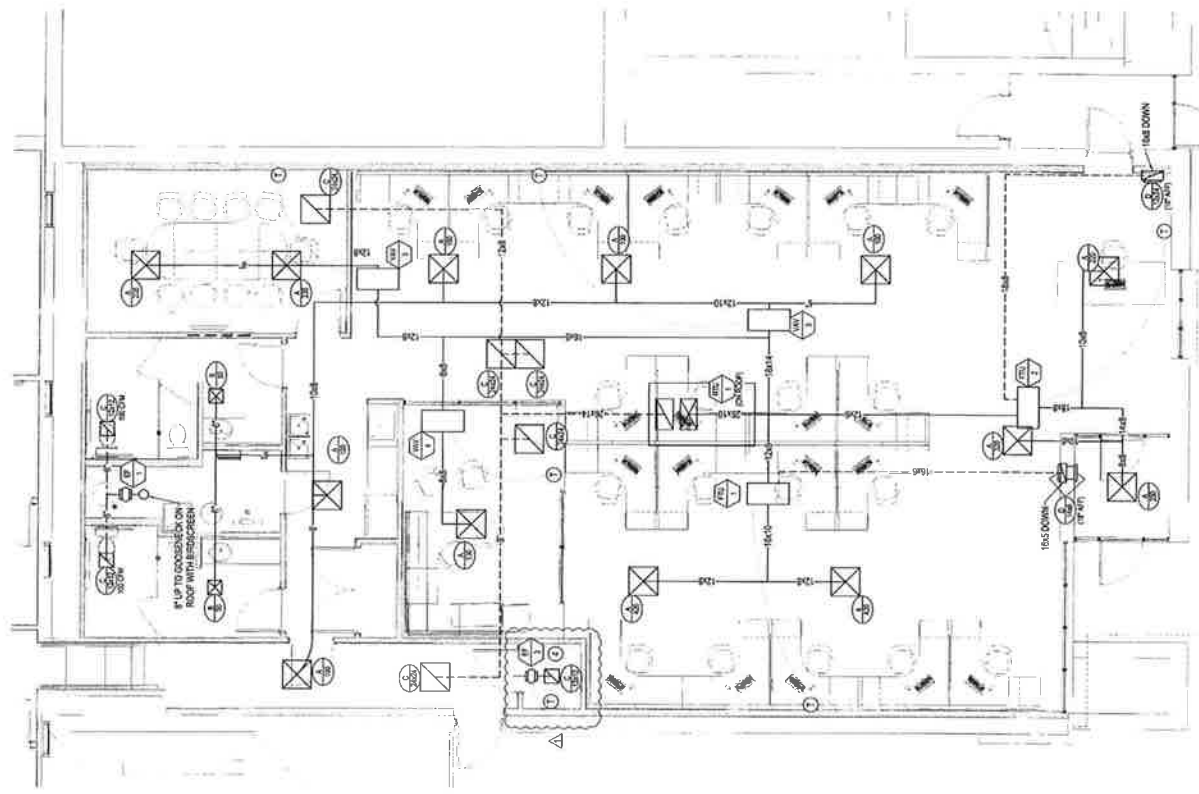
THE INFORMATION CONTAINED HEREIN IS THE PROPERTY OF TIMBERLAKE ENGINEERING, P.C. IT IS TO BE USED ONLY FOR THE PROJECT AND SITE SPECIFICALLY IDENTIFIED HEREIN. IT IS NOT TO BE REPRODUCED, COPIED, OR TRANSMITTED IN ANY FORM OR BY ANY MEANS, ELECTRONIC OR MECHANICAL, INCLUDING PHOTOCOPYING, RECORDING, OR BY ANY INFORMATION STORAGE AND RETRIEVAL SYSTEM, WITHOUT THE WRITTEN PERMISSION OF TIMBERLAKE ENGINEERING, P.C.



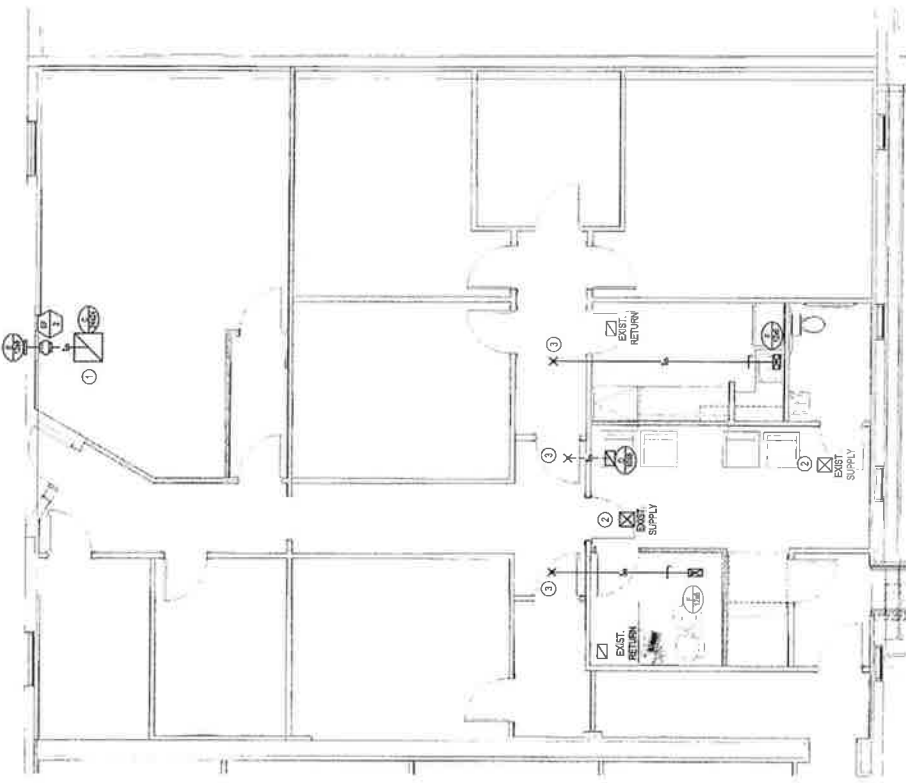
TIMBERLAKE ENGINEERING, P.C.
 Mark T. Thompson, P.E.
 1200 W. HICKORY AVE. SUITE 100
 BOONE, NC 28606
 PHONE: 828.261.1111
 FAX: 828.261.1112
 WWW.TIMBERLAKE-ENGINEERING.COM

BOONE COUNTY WALNUT OFFICE

DATE	3/27/2011	SHEET NO.	001
DESIGNED BY	JPM	PROJECT NO.	1111
SCALE	1/4" = 1'-0"		



609 WALNUT
1/4" = 1'-0"



605 WALNUT
1/4" = 1'-0"

- GENERAL NOTES**
- COORDINATE THERMOSTAT LOCATIONS WITH MODULAR EXHAUST FAN.
 - ALL WORK IN 605 WALNUT TO BE BID AS ALTERNATE.

- KEYED NOTES**
- REMOVE GRILLE AND CAP RETURN AIR DUCT SERVING WAITING ROOM. RETURN AIR GRILL FOR EXHAUST FAN.
 - TAKE AERON BEADINGS AT THE TWO EXISTING SUPPLIES IN WAITING ROOM. RE-BALANCE TO PROVIDE 1/2 OF TOTAL AIRFLOW IN NEW OFFICE AND 1/2 IN NEW BREAK ROOM.
 - LOCATE AND TAP EXISTING SUPPLY AND RETURN DUCTS.
 - SEE IT CLOSET RETAIL CHANGE.

ENGINEER IS THE PROPERTY OF TIMBERLAKI ENGINEERING, INC. ANY REUSE OR MODIFICATION OF THIS DRAWING WITHOUT THE WRITTEN PERMISSION OF TIMBERLAKI ENGINEERING, INC. IS PROHIBITED.

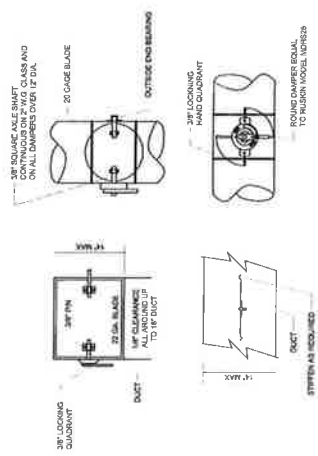
DO NOT SCALE THIS DRAWING. DIMENSIONS SHALL BE AS SHOWN.

ADDED IT CLOSET VENTILATION

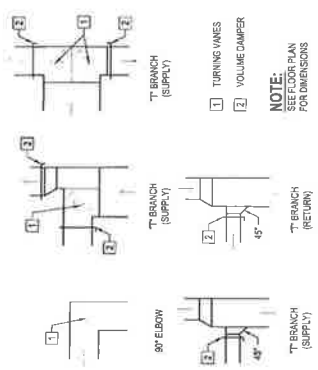
DATE: 8/27

BY: [Signature]

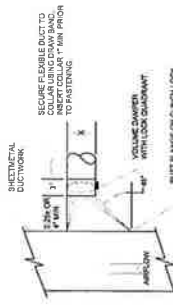
THE PROFESSIONAL ENGINEER SEAL ON THIS DRAWING HAS BEEN PLACED UNDER THE SUPERVISION OF THE REGISTERED PROFESSIONAL ENGINEER. THE REGISTERED PROFESSIONAL ENGINEER ACCEPTS RESPONSIBILITY FOR THE WORK SHOWN ON THIS DRAWING TO THE EXTENT OF HIS OR HER PROFESSIONAL OBLIGATION. PROJECT: COMMERCIAL DIRECT, 11 MARINO DR. S.W.



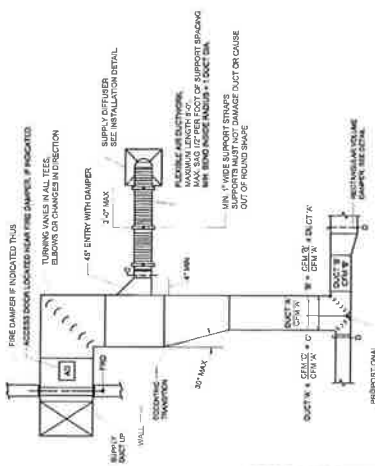
RECTANGULAR & ROUND VOLUME DAMPERS
NOT TO SCALE



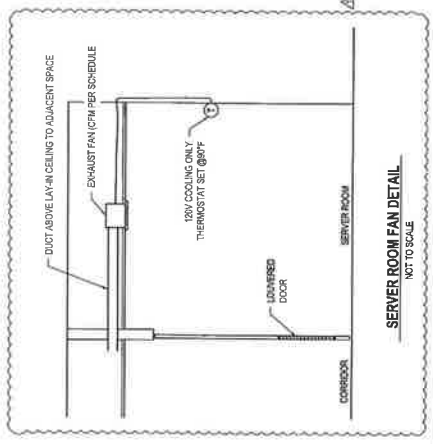
DUCTWORK FITTINGS DETAIL
NOT TO SCALE



45 DEGREE TAKE - OFF
NOT TO SCALE



TYPICAL DUCTWORK DETAIL
NOT TO SCALE



SERVER ROOM FAN DETAIL
NOT TO SCALE

AIR DEVICES SCHEDULE

MARK	SYMBOL	DESCRIPTION	SIZE	UNIT	REMARKS
1	1	90° ELBOW	18\"/>		

VAV & FAN TERMINAL UNIT SCHEDULE

MARK	SYMBOL	DESCRIPTION	SIZE	UNIT	REMARKS
1	1	90° ELBOW	18\"/>		

HVAC EQUIPMENT SCHEDULE

MARK	SYMBOL	DESCRIPTION	SIZE	UNIT	REMARKS
1	1	90° ELBOW	18\"/>		

MECHANICAL SCHEDULE

MARK	SYMBOL	DESCRIPTION	SIZE	UNIT	REMARKS
1	1	90° ELBOW	18\"/>		

TIMBERLAKI ENGINEERING, P.C.
11111 MARINO DRIVE, S.W.
SUITE 100
BOONE COUNTY, MISSOURI 64603
PH: 660-261-1111
FAX: 660-261-1112
WWW.TIMBERLAKIENGINEERING.COM

BOONE COUNTY WALNUT OFFICE
DATE: 8/27/11
DRAWN BY: [Signature]
CHECKED BY: [Signature]
PROJECT NO: 11011
SCALE: AS SHOWN

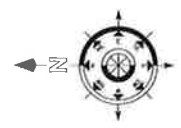
DESIGNER ASSUMES THE INTEGRITY OF ALL INFORMATION PROVIDED AND WILL NOT BE RESPONSIBLE FOR ERRORS OR OMISSIONS IN THIS DRAWING WITHOUT THE WRITTEN PERMISSION OF THE ENGINEER.

DO NOT SCALE THIS DRAWING
 SOME DIMENSIONS MAY VARY

REVISIONS
 DATE
 BY

ADDED 2" PVC CONDUIT IN RELOCATED IT CLOSET
 11/27/2013

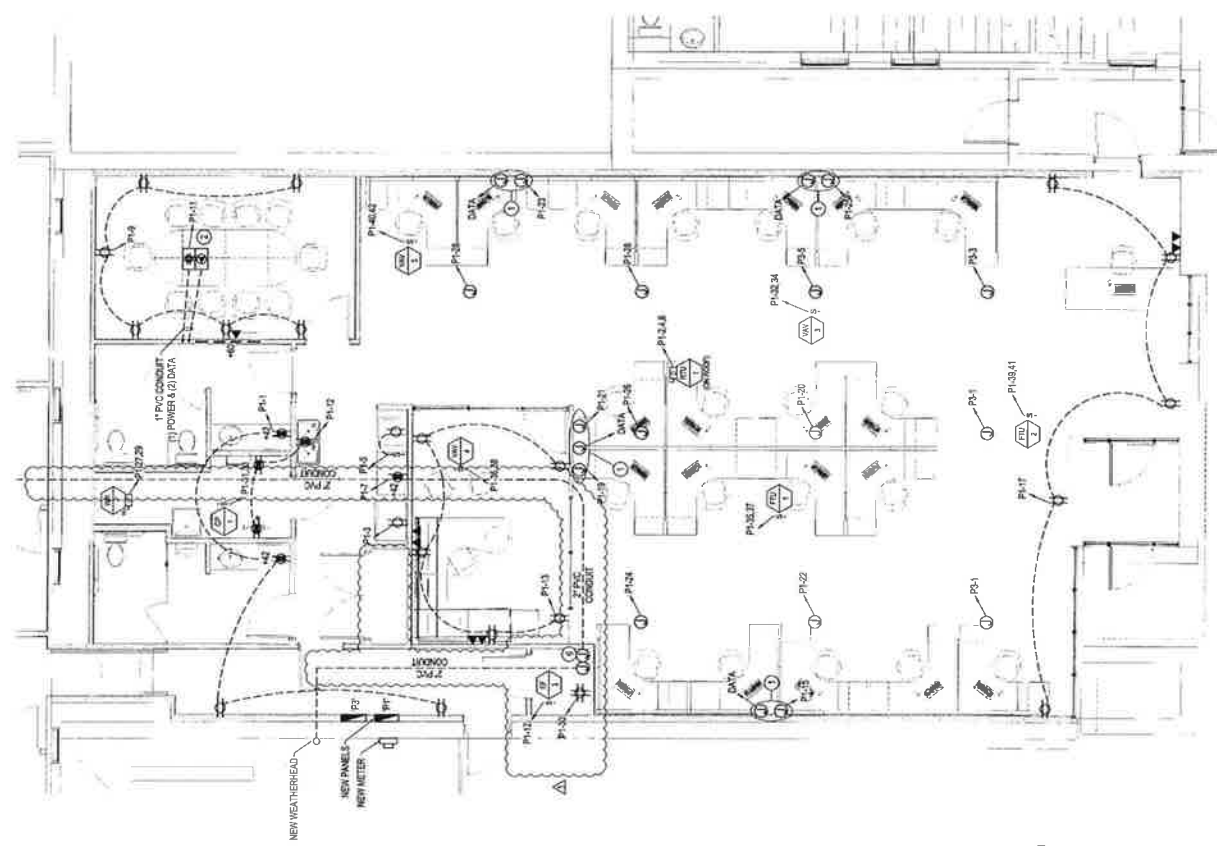
THE PROFESSIONAL ENGINEER SHALL BE RESPONSIBLE FOR THE DESIGN AND CONSTRUCTION OF THE ELECTRICAL SYSTEM AND SHALL BE RESPONSIBLE FOR THE INTEGRITY OF THE DESIGN AND CONSTRUCTION OF THE ELECTRICAL SYSTEM AND SHALL BE RESPONSIBLE FOR THE INTEGRITY OF THE DESIGN AND CONSTRUCTION OF THE ELECTRICAL SYSTEM.



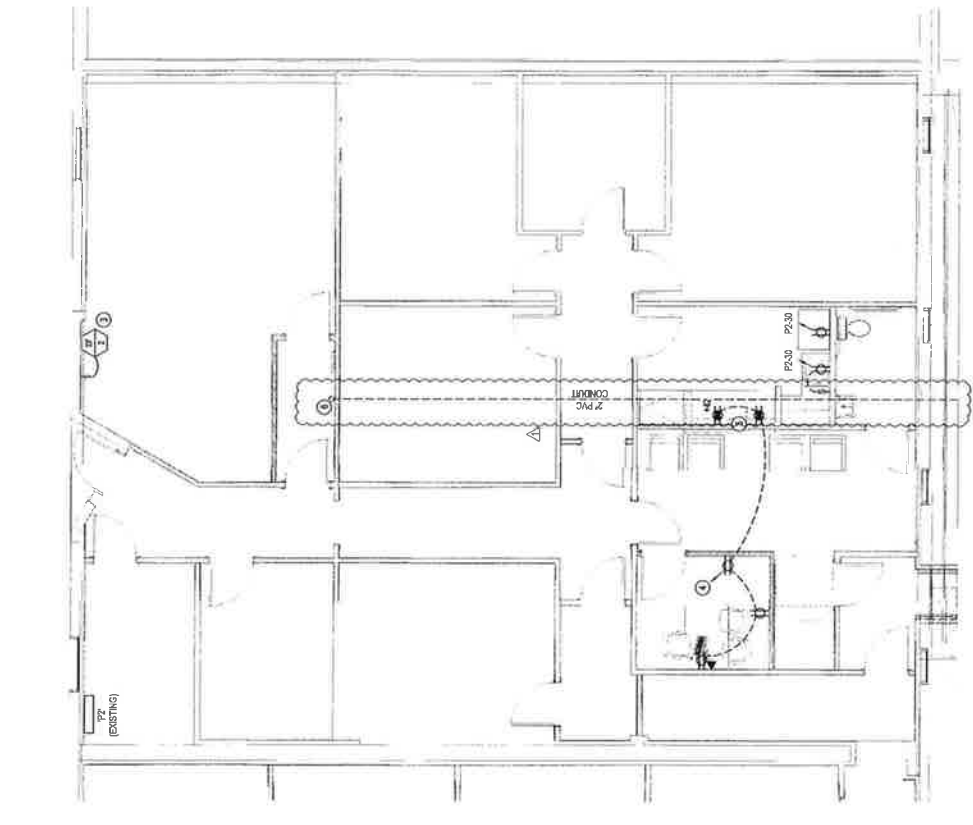
TIMBERLAKE ENGINEERING, P.C.
 100 EAST WALNUT
 BOONE COUNTY, MD 21021
 REGISTERED PROFESSIONAL ENGINEER
 STATE OF MARYLAND LICENSE NO. 17395

BOONE COUNTY WALNUT OFFICE
 DATE: 11/27/2013
 DRAWN BY: JTB
 PROJECT NO: 1308
 SCALE: 1/8" = 1'-0"

E1.0



609 WALNUT
 1/8" = 1'-0"



605 WALNUT
 1/8" = 1'-0"

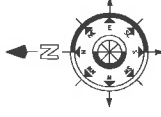
- GENERAL NOTES**
- ALL WORK IN BOONE WALNUT TO BE BID AS ALTERNATE
 - OWNER TO PROVIDE CONDUIT AND JUNCTION BOXES ONLY FOR DATA, CABLE & OTHERS
- KEYED NOTES**
- RUN POWER TO DUPLEX AT EACH CUBICAL, PROVIDE 1/2" CONDUIT TO EACH CUBICAL, CABLE BY OTHERS
 - VERIFY EXACT LOCATION WITH OWNER
 - CIRCUIT FAN ON NEAREST EXISTING CONVENIENCE OUTLET BRANCH
 - ADD TO WAITING ROOM CONVENIENCE OUTLET CIRCUIT
 - COORDINATE OUTLET LOCATION WITH ARCHITECTURAL
 - PROVIDE 2" PVC CONDUIT PLUMBING ABOVE CEILING FOR DATA CABLES & OTHERS

THESE PLANS AND SPECIFICATIONS ARE THE PROPERTY OF TIMBERLAKE ENGINEERING, P.C. ANY REUSE OR REPRODUCTION OF THESE PLANS WITHOUT THE WRITTEN PERMISSION OF TIMBERLAKE ENGINEERING IS STRICTLY PROHIBITED.

DO NOT SCALE THIS DRAWING.
 SOME DIMENSIONS MAY VARY FROM SCALE AND OCCUR.

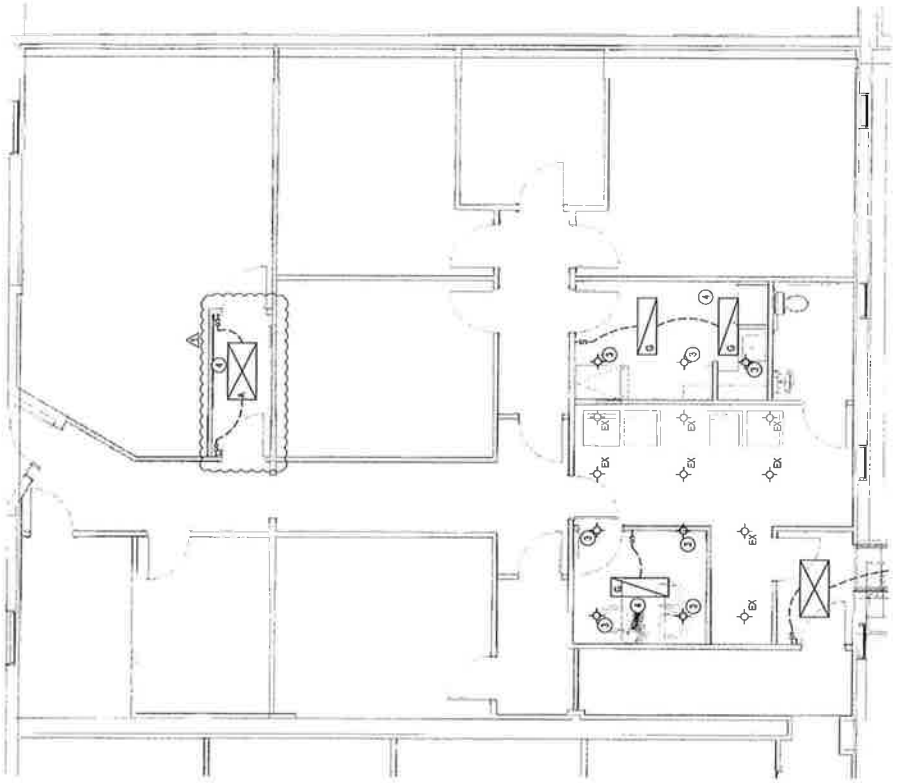
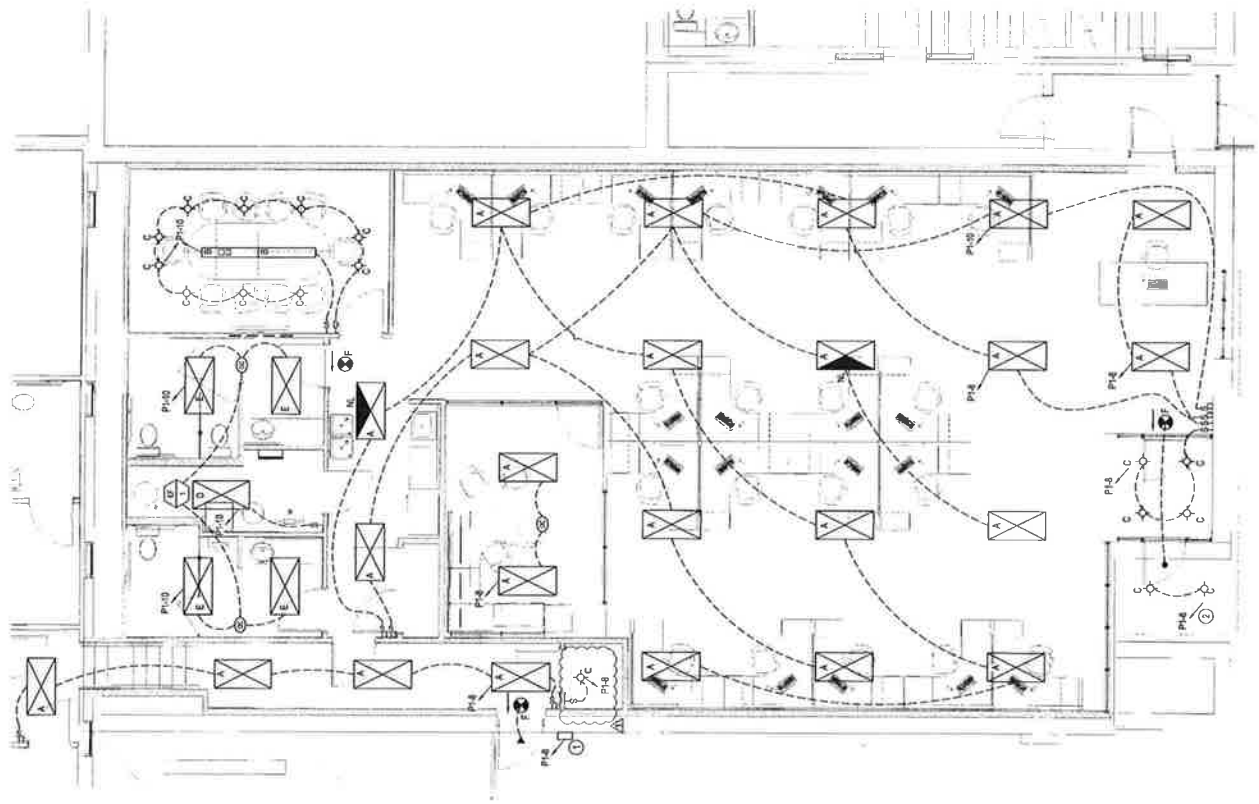
DATE	10/27/2010
PROJECT	BOONE COUNTY WALNUT OFFICE
LOCATION	
SCALE	

THE INFORMATION CONTAINED ON THESE PLANS HAS BEEN PREPARED BY THE ENGINEER IN ACCORDANCE WITH THE REQUIREMENTS OF THE PROFESSIONAL ENGINEERING ACT. THE ENGINEER HAS CONDUCTED VISUAL GENERAL VERIFICATION OF THE PROJECT AND HAS NOT CONDUCTED AN ANALYSIS OF THE PROJECT. THE ENGINEER DOES NOT ASSUME RESPONSIBILITY FOR OTHER PROJECTS OR FOR THE ACCURACY OF THE INFORMATION PROVIDED BY OTHERS.



TIMBERLAKE ENGINEERING, P.C.
 1005 S. TOWN SQUARE
 COLUMBIANA, NC 28028
 (704) 271-4280
 www.timberlakeeng.com

BOONE COUNTY WALNUT OFFICE
 SHEET NO. E2.0
 SCALE: 1/8" = 1'-0"



BUILDING OVERVIEW
 SCALE: 3/8" = 1'-0"

ITEM	DESCRIPTION	QUANTITY	UNIT	PERCENT	NOTES
A	RECESSED CAN LIGHTS	10	EA	100%	RECESSED CAN LIGHTS
B	TRAY MOUNTED LIGHTS	10	EA	100%	TRAY MOUNTED LIGHTS
C	RECESSED CAN LIGHTS	10	EA	100%	RECESSED CAN LIGHTS
D	TRAY MOUNTED LIGHTS	10	EA	100%	TRAY MOUNTED LIGHTS
E	RECESSED CAN LIGHTS	10	EA	100%	RECESSED CAN LIGHTS
F	TRAY MOUNTED LIGHTS	10	EA	100%	TRAY MOUNTED LIGHTS
G	RECESSED CAN LIGHTS	10	EA	100%	RECESSED CAN LIGHTS
H	TRAY MOUNTED LIGHTS	10	EA	100%	TRAY MOUNTED LIGHTS
I	RECESSED CAN LIGHTS	10	EA	100%	RECESSED CAN LIGHTS
J	TRAY MOUNTED LIGHTS	10	EA	100%	TRAY MOUNTED LIGHTS
K	RECESSED CAN LIGHTS	10	EA	100%	RECESSED CAN LIGHTS
L	TRAY MOUNTED LIGHTS	10	EA	100%	TRAY MOUNTED LIGHTS
M	RECESSED CAN LIGHTS	10	EA	100%	RECESSED CAN LIGHTS
N	TRAY MOUNTED LIGHTS	10	EA	100%	TRAY MOUNTED LIGHTS
O	RECESSED CAN LIGHTS	10	EA	100%	RECESSED CAN LIGHTS
P	TRAY MOUNTED LIGHTS	10	EA	100%	TRAY MOUNTED LIGHTS
Q	RECESSED CAN LIGHTS	10	EA	100%	RECESSED CAN LIGHTS
R	TRAY MOUNTED LIGHTS	10	EA	100%	TRAY MOUNTED LIGHTS
S	RECESSED CAN LIGHTS	10	EA	100%	RECESSED CAN LIGHTS
T	TRAY MOUNTED LIGHTS	10	EA	100%	TRAY MOUNTED LIGHTS
U	RECESSED CAN LIGHTS	10	EA	100%	RECESSED CAN LIGHTS
V	TRAY MOUNTED LIGHTS	10	EA	100%	TRAY MOUNTED LIGHTS
W	RECESSED CAN LIGHTS	10	EA	100%	RECESSED CAN LIGHTS
X	TRAY MOUNTED LIGHTS	10	EA	100%	TRAY MOUNTED LIGHTS
Y	RECESSED CAN LIGHTS	10	EA	100%	RECESSED CAN LIGHTS
Z	TRAY MOUNTED LIGHTS	10	EA	100%	TRAY MOUNTED LIGHTS

- KEYED NOTES**
1. RECESSED CAN LIGHTS TO BE INSTALLED THROUGH EXISTING PHOTOCELL SENSING AND SMOKE DETECTOR (WORK TO BE EQUAL)
 2. CIRCUIT FOR PHOTOCELL (WORK TO BE EQUAL)
 3. REMOVE EXISTING CAN LIGHTS
 4. CIRCUITS FOR LIGHT FIXTURES ON EXISTING LIGHTING CIRCUITS

- GENERAL NOTES**
1. ALL WORK IN BOONE WALNUT TO BE B.O.A.S. ALTERNATE