

2023 ANNUAL REPORT

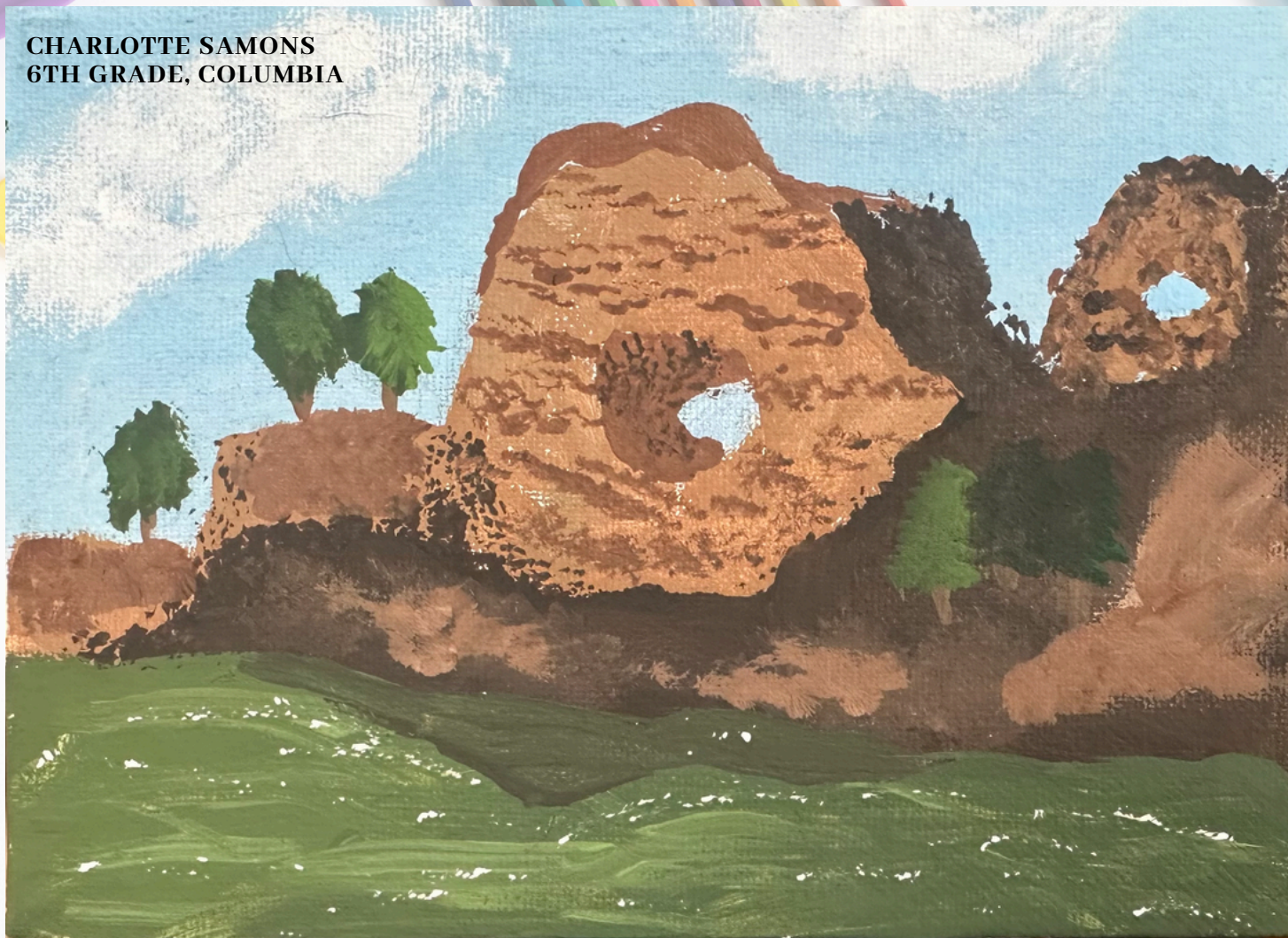
Boone County Community
Services Department



**Boone County
Children's Services Fund**



**CHARLOTTE SAMONS
6TH GRADE, COLUMBIA**



**GABRIEL HUMPHREY
3RD GRADE, COLUMBIA**



**ELIANA WILKINSON
4TH GRADE, COLUMBIA**

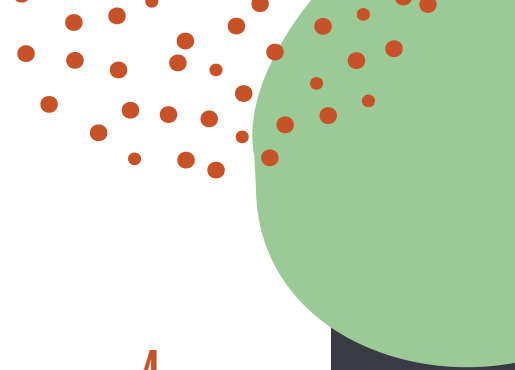
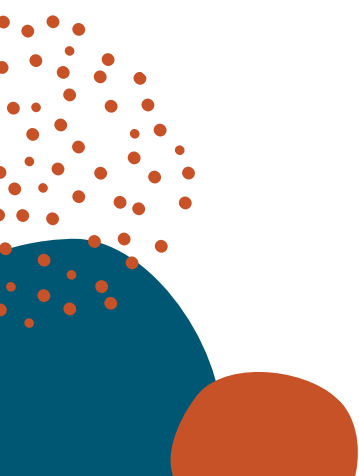


Table of Contents

Boone County Community Services Department (BCCSD)	4
Letter from the Director	5
Community Impact	6
2023 Program Outcomes Overview	8
Infant & Early Childhood Programs	10
School-Based Programs	18
Youth & Family Support Programs	26
Treatment Programs	36
Community Support & Basic Needs Programs	42
Community Collaboration	50



Boone County Community Services Department (BCCSD)

The Community Services Department was created to oversee and coordinate the disbursement of the funds received from the Children's Services Fund sales tax and the domestic violence funds collected through court fees.

The mission of Boone County Community Services is to support the greatest possible level of independence and self-sufficiency of Boone County residents by promoting their physical, mental, and social well-being to cultivate a safe and healthy community.

Children's Services Fund

On November 6, 2012, the citizens of Boone County passed County of Boone Proposition 1, which created a Children's Services Fund for children and youth 19 years of age or less in Boone County. The Boone County Children's Services Board (BCCSB) has been appointed by the County Commission and entrusted to oversee this Fund. The Fund was created pursuant to RSMo §67.1775, RSMo §210.861, and the ballot language presented to the voters on November 6, 2012. RSMo §210.861 specifies the types of services that may be funded by the Children's Services Fund. The mission of the BCCSB is:

To improve the lives of children, youth, and families in Boone County by strategically investing in the creation and maintenance of integrated systems that deliver effective and quality services for children and families in need.

In 2021, the BCCSB adopted this equity statement:

The Boone County Children's Services Board (BCCSB) is dedicated to improving the lives of children, youth, and families in Boone County. Our responsibility is to ensure equitable and fair stewardship of resources that have the greatest impact on the lives of children and families within Boone County. We acknowledge our society's history of both active and passive oppression, exclusion, and racism toward underserved community members. We are committed to equity and inclusivity in our policies and practices. These values will be at the forefront of our funding decisions as we promote inclusive practices within our community.

Domestic Violence Services Fund

State of Missouri statutes authorize counties to collect fees to fund shelters for victims of domestic violence. Per these statutes, the County of Boone (Boone County) collects fees on civil actions, marriage licenses, and criminal cases. These funds are then utilized to provide funding for shelters for victims of domestic violence. True North of Columbia, Inc. received \$21,820.53 in 2022 to provide victims of domestic and sexual violence with safe housing, advocacy, and support.

Dear Boone County Residents,

I am pleased to present the annual report for the Boone County Community Services Department (BCCSD), highlighting our activities and achievements over the past year. It has been a year of growth and collaboration as we continue to work toward our mission of promoting the well-being of children, youth, and families in Boone County.

The BCCSD recently held an art contest for Boone County children and youth, inviting them to depict their favorite person or place in the community. The vibrant and imaginative artwork submitted by these young artists has been incorporated throughout this report, showcasing their talent and unique perspectives. The artist's name, grade level, and city of residence are noted by each art piece.

We are excited to welcome several new members to the Boone County Children's Services Board (BCCSB), bringing a diverse range of expertise and perspectives to our organization. Their dedication and passion for our mission will undoubtedly strengthen our efforts in the coming years.

In the past year, we initiated new contracts for the majority of the Boone County Children's Services Fund (BCCSF), expanding our reach and impact in the community. To ensure the successful implementation of these contracts, we conducted site visits to ensure that organizations had the necessary systems in place for data collection and reporting.

To better understand the impact of the BCCSF over the last 10 years, we hired Partner for Better to conduct a comprehensive evaluation. This evaluation will provide valuable insights that will guide our future strategies and investments. We anticipate the final report to be completed by the end of 2024.

We have been actively engaging with organizations that have not previously applied for funding through the BCCSF, encouraging them to explore the opportunities available to support their programs and services. We hope to continue growing in the diversity of organizations and programs supported by the BCCSF.

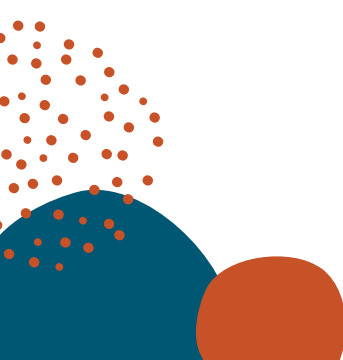
Our efforts on the Boone County Upward Mobility project have continued. Our department hired a Program Manager fully dedicated to the continuation and progress of the Upward Mobility project. A community update report was released in September 2023 highlighting the progress of the workgroups since the release of the original plan. A major accomplishment was collaborating with the City of Columbia on conducting a joint-funded housing study, a key priority identified in the Upward Mobility plan. The BCCSD released a Request for Proposal to hire a consultant to conduct the study with the contract starting in early 2024. We anticipate the housing study to be completed by the fall of 2024.

We continue to strengthen our partnerships with other community organizations and initiatives, including supporting the development of the Boone County Master Plan and the City of Columbia's Community Health Assessment and Improvement Plan, participating in the Columbia Chamber of Commerce's Inclusion Council and attending the annual Leadership Trip, and attending community meetings such as REDI, the State of Inclusivity Conference, Unity in the Community, the Source Summit Global Conference, and more. These collaborations have allowed us to increase our impact and reach a broader audience.

In conclusion, we are proud of the progress we have made over the past year and grateful for the continued support of the community. We look forward to another year of making a positive difference in the lives of children, youth, and families in Boone County.

Sincerely,

Joanne Nelson
Community Services Department, Director



Community Impact

Results-Based Accountability

The BCCSD began incorporating the Results-Based Accountability (RBA) framework throughout its operations and community-level projects. The RBA framework can be utilized to make change at a population and organizational/programmatic level.

Population Accountability focuses on improving the quality of life for a population (geographic location).

This report will provide information on Population Accountability by demonstrating the collective impact observed through BCCSD funded programs in 2023.

Performance Accountability focuses on improving how well a program, agency, or service system is performing.

Performance Accountability for programs is measured by asking:

- How much did we do?
- How well did we do it?
- Is anyone better off?

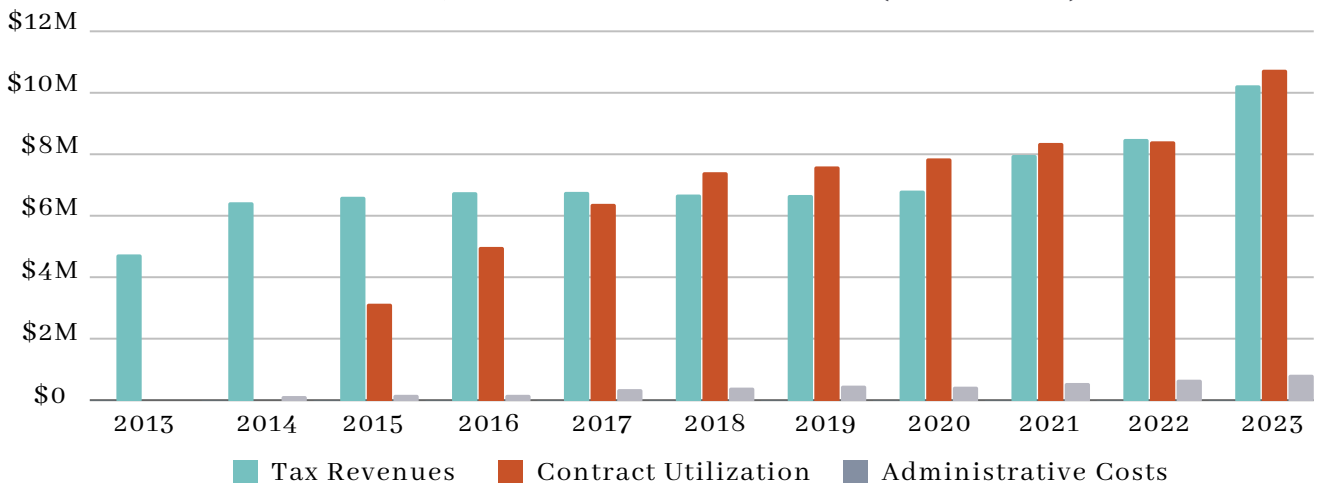
The BCCSD funded organizations report on data answering all three of these questions. This data is incorporated throughout this report by providing the number of individuals served, amount utilized, success stories, and performance measures.

Community Investment

The BCCSF tax began in 2013 and the BCCSB began contracting with programs in 2014. Tax revenue is received through the ¼ cent sales tax, which created the CSF and covers costs to administer it. Organizations are contracted through a purchase of service model, where services are delivered for a set rate and reimbursed by the CSF. The overall contracted amount is higher than what is actually utilized for the fiscal year due to this structure. Administrative costs include personnel costs, supplies, training, utilities, insurance, and services from other offices such as the Auditor's Office, Purchasing Department, Legal Services, and Facilities Management Department. Key takeaways, which can be seen in the graph below, include:

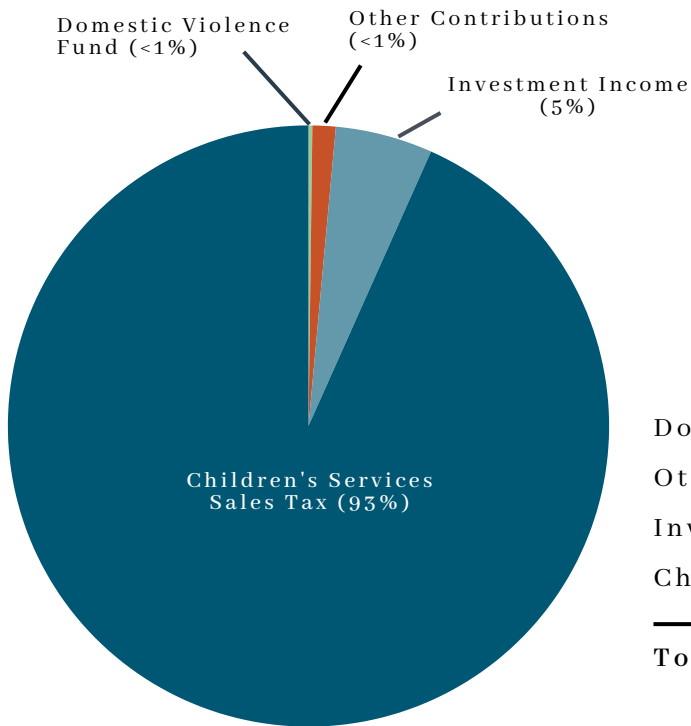
- Tax revenues have generated an average of \$8 million a year. There was a 21% growth in tax revenues between 2022 and 2023. Boone County began collecting internet use tax for sales purchased online which contributed toward the tax revenue growth.
- Contracted amounts and utilization have been higher than tax revenues in order to lower the fund balance. Fund Balance is the net difference between the assets and liabilities of a governmental fund. It is not cash on hand; instead, throughout the year, significant portions of fund balance consist of receivables associated with property taxes, sales taxes, and reimbursement revenues. Because of this, and to ensure adequate cash flow, County policy requires a minimum fund balance equal to two months' expenditures (17%).
- Administrative costs are historically low compared to the tax revenues. Most of the funds go to supporting children, youth, and their families.

CHILDREN'S SERVICES FUND - TAX REVENUES, CONTRACT UTILIZATION, AND ADMINISTRATIVE COSTS (IN MILLIONS)



2023 Financial Summary

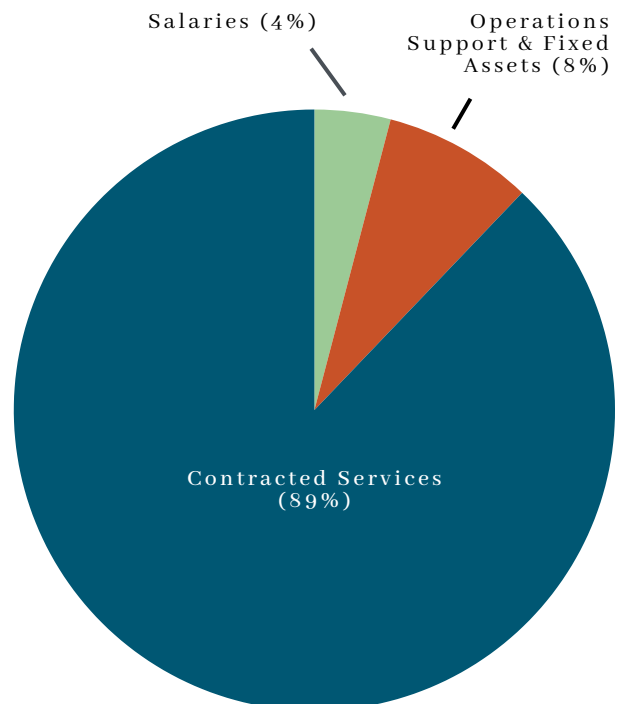
Revenues



Domestic Violence Fund	\$22,751
Other Contributions	\$136,866
Investment Income	\$573,992
Children's Services Sales Tax	\$10,243,477
Total Revenue	\$10,977,086

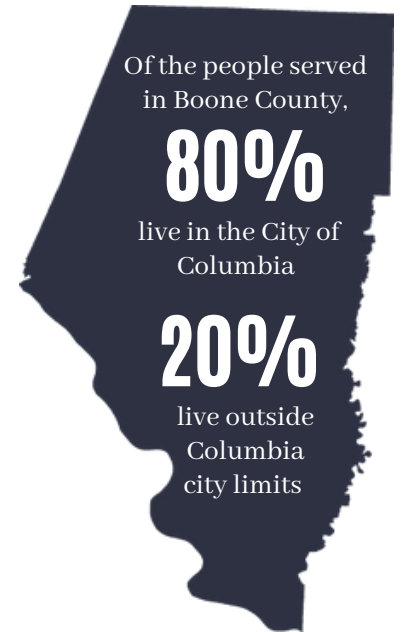
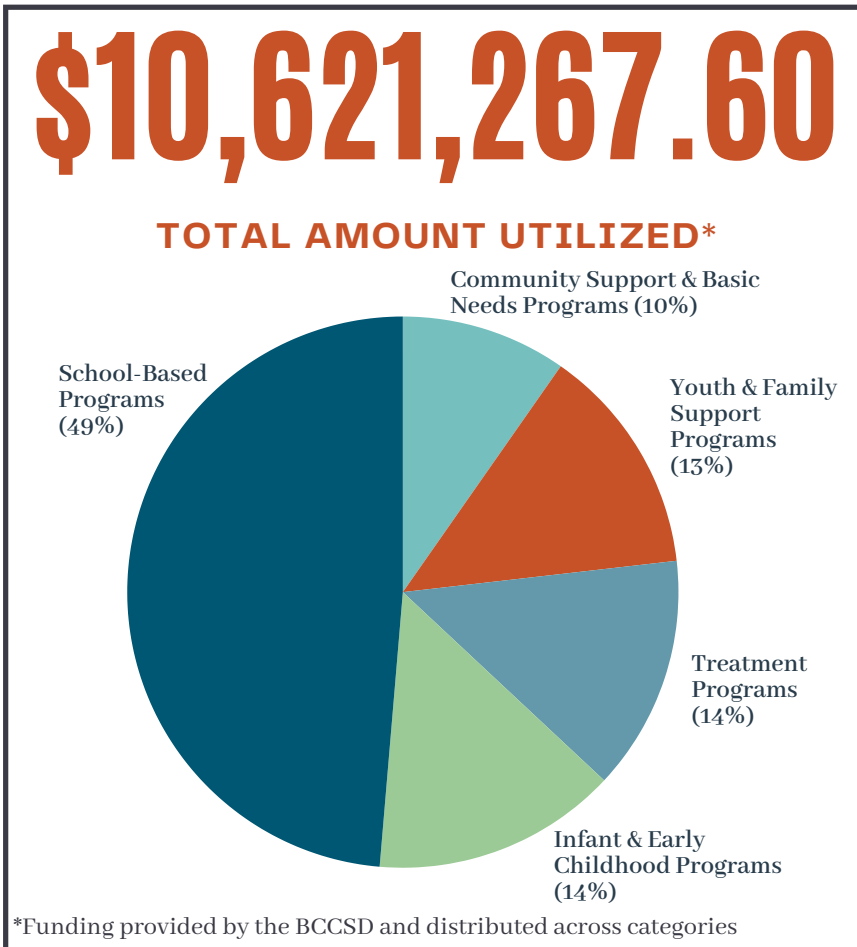
Expenses

Salaries	\$493,848
Operations Support & Fixed Assets	\$973,899
Contracted Services	
• Services for Children, Families & Individuals	\$10,621,267
• Professional Services	\$33,817
Total Expenses	\$11,990,456
Release of Prior Year Encumbrances (\$132,375)	



2023 Program Out

The BCCSD established common outcomes across contracted programs to better tell the story of how, collectively, programs impact lives and community-level issues within Boone County. The outcomes, number of individuals served, and demographics in this section may include those served through other funding sources.



81,809
INDIVIDUALS SERVED



30,808

individuals received items to meet their basic needs



416

individuals gained positive parenting/co-parenting skills



5,325

hours of mentoring were funded



1,033

individuals received home visits

comes Overview

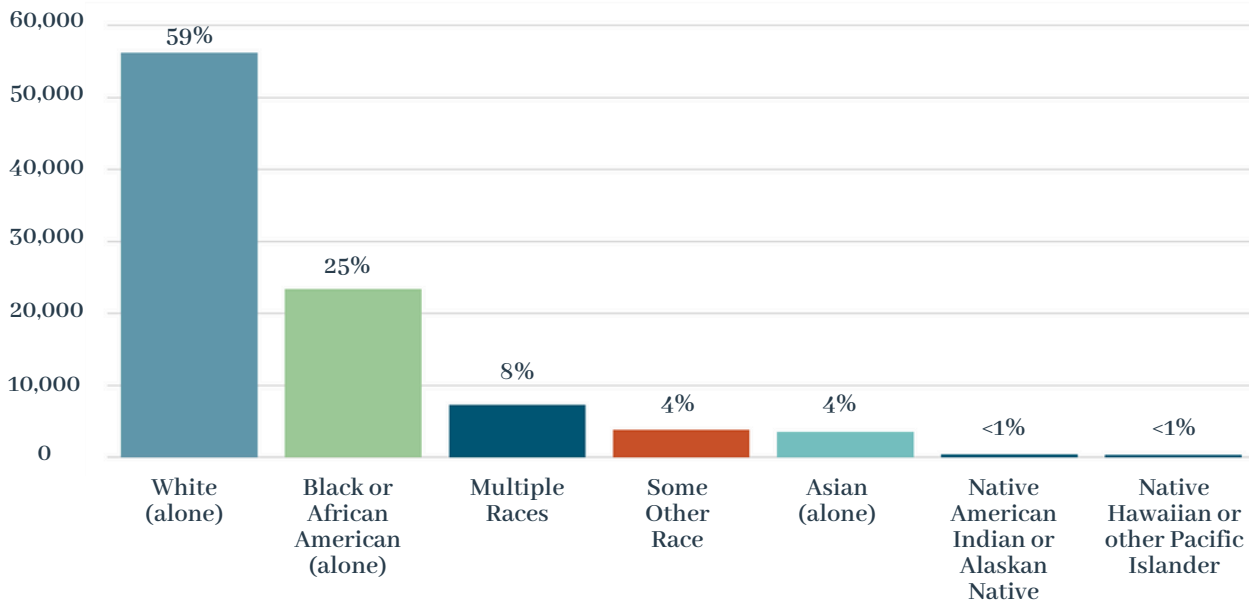
Boone County is known for its outstanding quality of life and continues to be one of Missouri's most desirable places to live, work, and do business. However, local data shows this is not true for all residents. When disaggregated by race, data show poorer outcomes for those in poverty and for communities of color. Those who have been historically marginalized face increased rates of infant mortality, poor health outcomes, and limited access to well-paying jobs due to systemic issues. The BCCSD is aware of these disparities and seeks to fund programs that serve higher rates of people of color. This data reflects demographic information about who received services compared to the population of Boone County in 2021.

Boone County Population by Race (2017-2021)*

- White (Alone) - 80.0%
- Black (Alone) - 9.2%
- Two or More Races - 5.3%
- All Other Races - 5.5%

*Boone Indicators Dashboard

TOTAL INDIVIDUALS SERVED BY RACE



88,120

screenings or assessments were administered



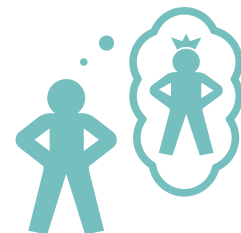
4,945

individuals received case management



2,043

individuals funded to complete training in evidence-based and/or best practices



840

individuals developed positive values, social competencies, or identities

Infant & Early Childhood Programs

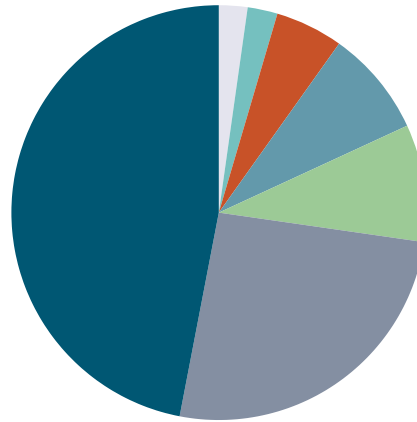
10
funded programs

Programs provided developmental and behavioral screenings, trainings, evidence-based or best practices curriculum, and early childhood basic needs.



8,208

individuals were served through BCCSD funding



TOTAL PROGRAM FUNDING

- Health & Medical (2%)
- Education (2%)
- Basic Needs (5%)
- Community Advancement (8%)
- Social Development & Enrichment (9%)
- Supportive Services (26%)
- Organizational Capacity Building (47%)

BAILEY'S SUCCESS STORY

HealthySteps began working with Bailey and her parents in the summer of 2022 when she was just 4 weeks old. They were referred to the program because both parents have a history of substance abuse. Bailey's mom, Jennifer, and her dad, Shawn, met after they were incarcerated and were both in rehab. Jennifer has two other children who were previously removed by the State due to drug use.

Soon after they met, Jennifer and Shawn became pregnant with Bailey. Both parents have said that they "never even thought about touching drugs again" after Jennifer became pregnant. They have faced many hurdles, including losing their driver's licenses, which resulted in a lack of transportation. However, they have been determined to overcome these challenges. Recently, after attending many required classes, Shawn was able to get his license back. They were also able to purchase a vehicle with cash that they had been saving.

Since enrolling in the program 18 months ago, they have not missed one doctor visit, nor been late. They have also held the same full-time jobs, maintained stable housing, and alternate their work shifts in order to take care of Bailey. During each visit, they were excited to learn as much as possible about Bailey's development. They took learning activities home and practiced with Bailey.

At Bailey's last well-child visit (18 months), she was meeting milestones of a much older child. She can name colors and give labels to pictures of food, animals, and shapes. She also uses sign language to assist with communicating. She can build a tall tower with 20-30 LEGO and can rearrange her magnetic alphabet letters in the correct order.

Jennifer and Shawn use positive parenting practices, and it is obvious that they have a strong bond with one another. These parents have made Bailey their first priority and are committed to changing their whole lifestyle to ensure a happy, healthy family.

University of Missouri - Division of Pediatrics,
Department of Child Health, and UM Health Care
HealthySteps for Young Children

LAURIE'S SUCCESS STORY

Laurie began bringing her 13-month-old son, Cory, to get social interaction with other children. They quickly felt at ease in the Lend & Learn space as Cory was learning to coordinate on his feet as an early walker. Lend & Learn is a safe environment with toys that are appropriate for his age. His gross motor skills exploded and, by the fall, he was running, climbing, and jumping. He loves to play outside on the playground on warm days. Cory is an energetic kid, and Laurie shared that he sleeps better at home on days that they get to play at Lend & Learn. Laurie and the staff built a strong, supportive relationship, often discussing parenting challenges, ideas, and resources for additional family support. FC4C connected her to several other community agencies that help families struggling to earn enough income to make ends meet.

Last fall, Laurie raised concerns about Cory's speech. FC4C staff walked her through the ASQ-3 (Ages and Stages Questionnaire) to determine if there were any developmental delays. Due to his low scores in communication, fine motor skills, and personal-social development, FC4C immediately connected the family with early intervention services through First Steps. Additionally, FC4C provided the family with focused activities, supplies, and support to help Cory grow and progress in his skills. FC4C have already seen a significant improvement in his expressive language skills. Cory is also learning baby sign language to help improve his communication, which has helped reduce his frustration and fits. Cory just celebrated his 2nd birthday, and FC4C was able to give the family a gently-used slide from its toy closet for him to play with at home.

First Chance for Children (FC4C)
Lend & Learn Libraries



657

individuals improved protective factors within the family



2,257

screenings or assessments were administered to identify if children were not on track with developmental milestones



1,455

home visits were funded



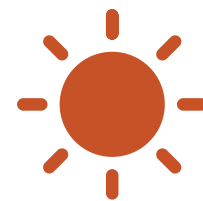
1,824

hours of case management were funded



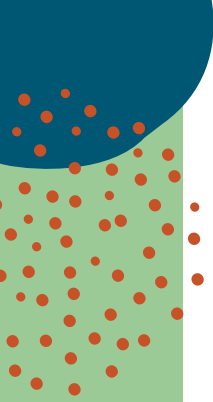
1,273

individuals increased their capacity to utilize evidence-based and/or best practices



11,004

hours of early childhood education and/or out-of-school programming were funded



FIRST CHANCE FOR CHILDREN

Baby Bags

- First Chance for Children provides a multi-faceted approach to addressing the needs of children and their families. Baby Bags is one component of this approach which provides education and basic necessities to meet a family's developmental, physical, and mental health needs. The goal is to strengthen families by helping them develop protective factors and providing basic necessities during times in need.

Amount Received:

\$94,306.00

IS ANYONE BETTER OFF?



100%

of parents/guardians reported their immediate needs being met



99%

of parents/guardians increased their knowledge of health and safety issues



100%

of parents/guardians reported decreased stress after receiving services

FIRST CHANCE FOR CHILDREN

Baby U

Baby U is one component of First Chance for Children's approach which provides home visiting services to prepare children to be socially, emotionally, and academically ready for kindergarten. Families are also given information on child development, access to resources, and support for healthy relationships.

Amount Received:

\$203,695.00

IS ANYONE BETTER OFF?



100%

of individuals made progress on their self-selected goals



98%

of individuals improved levels of anxiety/stress



96%

of parents/guardians increased their knowledge of child development and behavior

FIRST CHANCE FOR CHILDREN

CRIBS (Community Resources, Infant Beds, and Support)

The CRIBS program supports families leaving the hospital by providing basic health and safety items to care for a new baby. A trained counselor offers home visits to help meet developmental, physical, and mental health needs and to encourage a family's participation in longer term home visitation programs.

Amount Received:

\$24,525.00

IS ANYONE BETTER OFF?



100%

of families participating in the program did not have a child die due to sleep-related death



100%

of families reported increased knowledge of infant health and safety issues



158

safe cribs were distributed to families who lacked safe sleeping accommodations for their baby

FIRST CHANCE FOR CHILDREN

Lend & Learn Libraries

Lend & Learn Libraries provides a safe location for young children and their families to explore toys that assist in social-emotional, cognitive, motor, and language development. The program also offers events with parent-child activities.

Amount Received:

\$86,500.00

IS ANYONE BETTER OFF?



100%

of parents/guardians reported improved effectiveness of their parenting skills



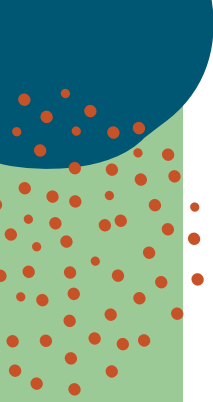
98%

of parents/guardians increased their knowledge of child development and behavior



100

of parents/guardians reported feeling their child improved or maintained their readiness for kindergarten



HARRISBURG EARLY LEARNING CENTER

School Age and Early Childhood Services

- The goal of Harrisburg Early Learning Center is to provide year-round services and affordable care for the children of northern Boone County. These services
- include social-emotional screenings for the children in the early childhood program, structured before- and after-school programming, and summer enrichment programming for school-aged children.

Amount Received:

\$41,393.55

IS ANYONE BETTER OFF?



94%

of children in the preschool program demonstrated an increase in positive social behaviors



100%

of school-aged children maintained or increased academic performance in math, science, language, and social studies



100%

of families reported less stress because their child(ren) were enrolled in quality and affordable child care

MARY LEE JOHNSTON COMMUNITY LEARNING CENTER

Johnston Early Learning

Mary Lee Johnston Community Learning Center (MLJCLC) provides its enrolled families with case management and support to access resources. In addition to regular childcare programming, MLJCLC provides a specialized pre-kindergarten class that utilizes the HighScope curriculum and provides assessments to prepare children for kindergarten.

Amount Received:

\$53,303.63

IS ANYONE BETTER OFF?



60%

of students are able to control how they express emotions on their first try



38%

of families made progress toward their goals to address identified needs



36%

of caregivers showed improved levels of stress



MOBERLY AREA COMMUNITY COLLEGE (MACC)

Quality Childcare Initiative at Moberly Area Community College

MACC offers scholarships for childcare providers and high school students to obtain their Child Development Associate (CDA) Credential. MACC also provides training and coaching in HighScope, an evidence-based curriculum for early childcare providers.

Amount Received:

\$378,714.12

IS ANYONE BETTER OFF?



73%

of early childcare teachers obtained their CDA credential



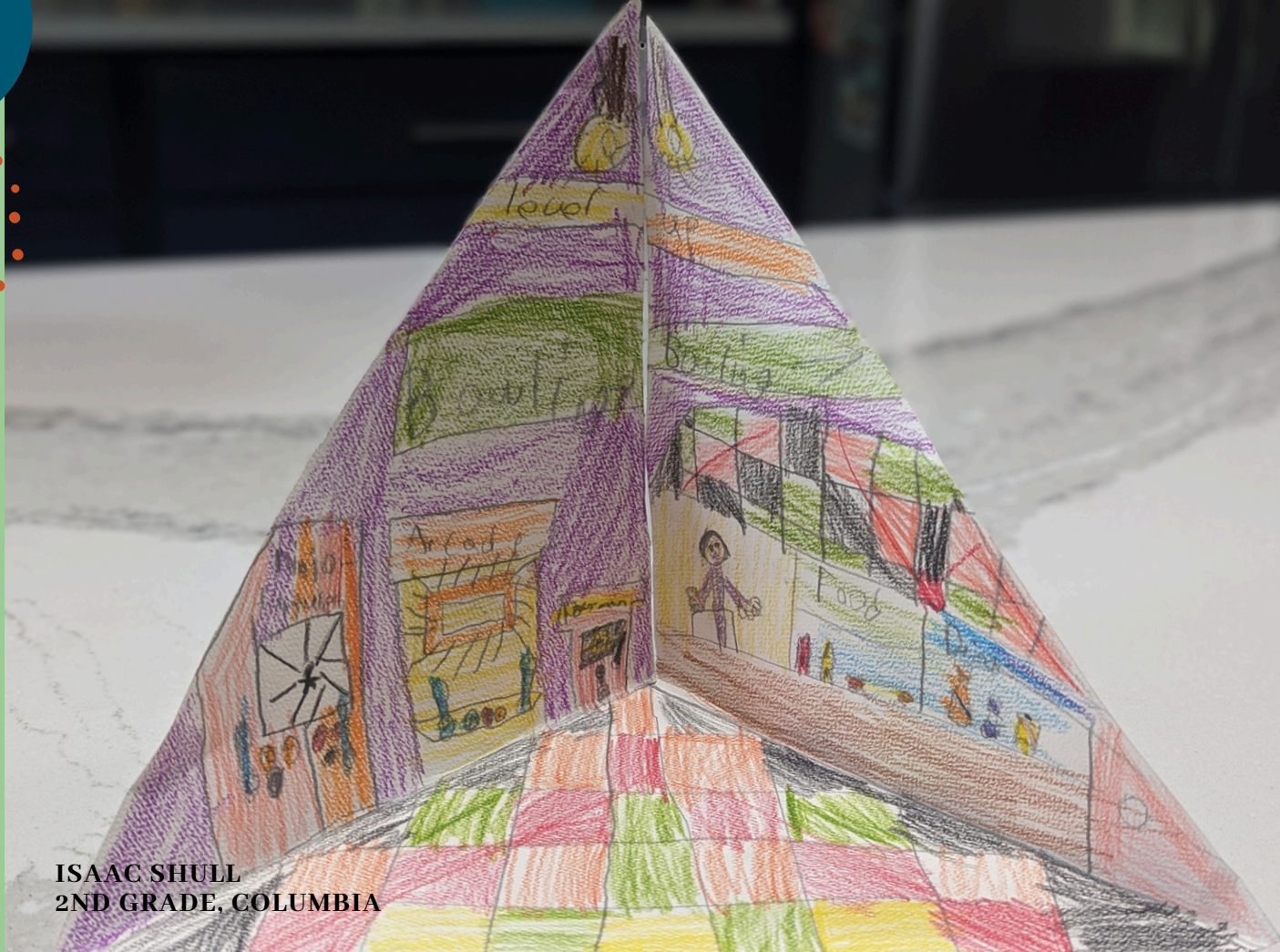
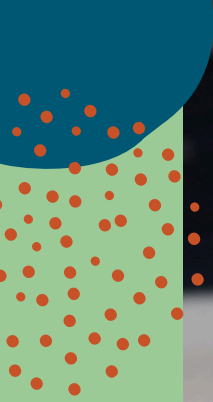
130

of teachers were trained in HighScope



100%

of childcare teachers who were trained in HighScope adopted the curriculum in their classrooms



ISAAC SHULL
2ND GRADE, COLUMBIA

UNIVERSITY OF MISSOURI - DEPARTMENT OF PSYCHIATRY

Boone County Early Childhood Coalition (BCECC)

BCECC organizes a coalition that supports collaboration and capacity building of early childhood providers. BCECC also provides support to families with children through the Triple P evidence-based intervention model which increases knowledge, skills, and confidence of families to reduce the prevalence of mental health, emotional, and behavioral problems in children.

Amount Received:

\$216,040.07

IS ANYONE BETTER OFF?



93%

of parents/guardians receiving one-on-one support maintained or increased the use of positive parenting strategies



87%

of professionals increased their knowledge of Triple P best practices



100%

of professionals receiving coaching services increased their ability to assist clients

UNIVERSITY OF MISSOURI - DEPARTMENT OF PSYCHIATRY

Amount Received:

\$269,858.44

Early Childhood Positive Behavior Support (ECPBS)

ECPBS provides training and coaching to early childhood educators to improve the quality of early childhood program environments in Boone County. ECPBS provides coaching using evidence-based practices to increase childcare providers' knowledge and abilities to build relationships with children and families, promote social-emotional development, reduce challenging behaviors, and promote kindergarten readiness.

IS ANYONE BETTER OFF?



98%

of parents/guardians receiving one-on-one support maintained or increased confidence in their parenting skills



97%

of early childhood teachers achieved their goals to implement best practices



71%

of early childhood teachers increased their knowledge of best practices

UNIVERSITY OF MISSOURI - DIVISION OF PEDIATRICS, DEPARTMENT OF CHILD HEALTH, AND UM HEALTH CARE

Amount Received:

\$158,715.51

HealthySteps for Young Children

HealthySteps for Young Children connects with families during pediatric well visits as part of the primary care team. They offer screenings, help with complex parenting issues, guidance and referrals, care coordination, and home visits.

IS ANYONE BETTER OFF?



79%

of families demonstrated improvement in implementing positive parenting practices



80%

of families reported benefits from accessing community resources



78%

of children were on schedule to attend well-child checks

School-Based Programs

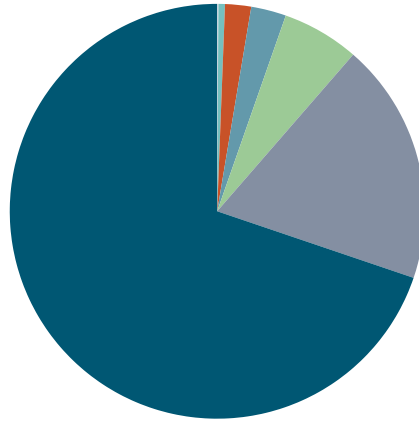
10

funded programs

Program services included training for teachers, after-school clubs, capacity building for student education, case management, social-emotional screenings, crisis intervention, and psychiatric services.



35,905
individuals were served through BCCSD funding



TOTAL PROGRAM FUNDING

- Community Advancement (<1%)
- Organizational Capacity Building (1%)
- Basic Needs (2%)
- Education (3%)
- Social Development & Enrichment (6%)
- Supportive Services (19%)
- Health & Medical (70%)



23%
of individuals funded resided outside Columbia city limits



1,720
individuals developed positive values, social competencies, and positive identities



2,254
individuals accessed supplemental food at their school

COMPASS HEALTH SUCCESS STORY

Compass Health received a referral for a high school student who was struggling to communicate her feelings amidst a distressful custody arrangement with her parents. School personnel noticed she was often emotionally dysregulated and unable to process and express how changes around her were affecting her personally and academically. After four months of weekly therapy, she was successfully discharged from care. School staff noted she now demonstrates resiliency in handling changes in her environment and routine between her parents' homes. She is also advocating for her needs in the school setting, legal system, and at both homes with both parents.

This young lady shared with her therapist that she feels more comfortable discussing difficult situations in general and finds relief in understanding and sharing her emotions. Seeing a therapist in her school building meant she did not need to miss much school, and her therapist could coordinate with school staff on how best to support her.

Compass Health, Inc.
School-Based Clinical Program

CCUA SUCCESS STORY

When CCUA arrived for their first outdoor lesson with Ms. Johnson's 3rd-grade class, she was skeptical that her students would be able to handle a 50-minute outdoor lesson. She shared that she had been struggling with some behavior and attention issues and had a feeling that a less controlled environment with more distractions would only exacerbate the problem. Nonetheless, she agreed to try, and took her students out to the school garden.

This particular day's lesson was about preparing the garden for winter. The students were tasked with digging through the garden to clear out any remaining plants. CCUA gave them magnifying glasses and encouraged them to share anything of interest they found while they dug. The students didn't hesitate to get their hands dirty to look for treasures hidden in the soil. They shared excitedly as they found old roots, seeds, interesting rocks, praying mantis egg cases, worms, and a cricket they named Jerry. As discoveries were made, the students bubbled with questions, which CCUA was happy to answer. The biggest find came when a few students unearthed an American Toad that had been sleeping in the ground. The students kept calm while staff held out the toad for each of them to study closer. As they took turns examining the toad with their magnifying glasses, CCUA was able to answer their ample questions. The students learned why toads hibernate, what hibernation is, what happens to the ground during winter, and much more.

The students led their lesson, asking questions about their findings and learning about what they were genuinely curious to know. The young scientists made important discoveries and learned new concepts from a myriad of scientific fields, all in one action-packed 50-minute lesson. By the end of their time together, Ms. Johnson was digging in the dirt alongside her students. Thankfully, her biggest battle of the day was not getting students to behave or participate, but rather getting them back inside.

Columbia Center for Urban Agriculture (CCUA)
Farm to School



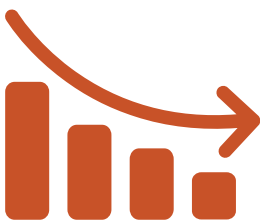
312

individuals increased their capacity or knowledge to utilize best practices



1,062

individuals received therapy services



295

individuals experienced fewer mental, emotional, and/or behavioral health symptoms



13,330

hours of case management were funded



CENTRAL MISSOURI COMMUNITY ACTION

Amount Received:

\$430,253.19

BRIDGE

BRIDGE supports families experiencing poverty who have children in the first few years of elementary school by working in collaboration with the child's teacher. The program helps build social-emotional skills within children and build resiliency in both children and families. BRIDGE also provides training to teachers to understand the impact poverty has on child development and learning.

IS ANYONE BETTER OFF?



95%

of children had Child Success Plans developed to support their academic performance



79%

of children maintained or improved in their age-appropriate social competencies



100%

of teachers increased their knowledge in topics related to poverty and child development

COLUMBIA CENTER FOR URBAN AGRICULTURE

Amount Received:

\$165,201.82

Farm to School

The Farm to School program provides nutrition- and garden-based education to eight Columbia elementary schools with high rates of children participating in free and reduced lunches. All Columbia Public Schools 3rd graders participate in an annual farm field trip.

IS ANYONE BETTER OFF?



76%

of 3rd and 5th grade students increased positive attitudes toward eating fruits and vegetables



95%

of teachers reported positive behaviors from 3rd and 5th grade students during Farm to School programming



79%

of participants attending one lesson reported learning something new about gardening and nutrition

COLUMBIA SCHOOL DISTRICT 93

Boone County Nature School

The Boone County Nature School provides an immersive experience to connect students with their local ecosystem. Funding from the Children's Services Fund supports an educator from Columbia Public Schools to provide programming to fifth grade students. All Boone County students will be able to attend programming offered at the Nature School.

The Boone County Nature School is currently being built and curriculum is being refined by teachers. Funding from the Children's Services Fund began in July 2023 through a Strategic Innovation Opportunity contract. Performance measures will to be developed and monitored.

Amount Received:

\$31,429.20

HOW MUCH DID WE DO?

2,503

students participated in programming at the Boone County Nature School

17

Boone County elementary schools were served

IS ANYONE BETTER OFF?



100%

of students fully participated in activities without discipline referrals

COMPASS HEALTH, INC.

School-Based Clinical Program

Compass provides therapeutic interventions within schools to help close the gap between schools, families, and mental health services for youth. Compass also provides education to school staff, consultation with teachers and school counselors, and coordination of care and resources.

Amount Received:

\$79,965.00

IS ANYONE BETTER OFF?



87%

of students receiving therapy made progress toward goals to address identified needs



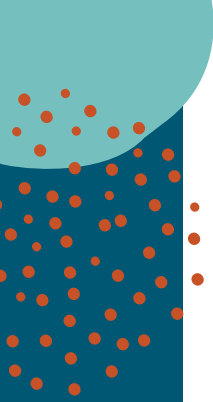
75%

of students were able to identify and appropriately express emotions



100%

of children and family members maintained or increased positive dynamics at home



CONNECTIONS TO SUCCESS, INC.

Project START (Services and Training Advancing Resilient Teens)

- Project START provides personal and professional development to youth within a school setting. The program also provides wraparound services to support youth as they strive to complete their education, secure meaningful employment, and reduce interactions with law enforcement. The goal is for youth to reach their full potential and personal goals.

Amount Received:

\$59,295.30

IS ANYONE BETTER OFF?



100%

of individuals improved conflict resolution and communication skills



100%

of individuals experienced a greater sense of self-worth



80%

of individuals reduced delinquency or criminal justice involvement

POWERHOUSE COMMUNITY DEVELOPMENT CORPORATION

Healthy Choices

Healthy Choices provides in-school programming for youth that focuses on life skills, leadership development, and employment preparation. Parents/guardians can also participate in Parent Cafes to help access resources and reduce stress. The goal of the program is to help youth develop positive values, social competencies, and identities.

Amount Received:

\$274,874.47

IS ANYONE BETTER OFF?



91%

of youth improved or maintained positive relationships with peers



82%

of individuals made progress on their goals



92%

of parents/guardians participating in parent cafes gained positive parenting skills



ISABELLA MORRIS
4TH GRADE, COLUMBIA

THE FOOD BANK FOR CENTRAL AND NORTHEAST MISSOURI, INC.

Buddy Pack Program

The Buddy Pack Program provides weekend meals for children experiencing food insecurity. Buddy Packs are distributed in schools each Friday and before school holidays throughout the school year.

Amount Received:

\$79,995.00

IS ANYONE BETTER OFF?



100%

of Buddy Packs distributed contained foods that met Feeding America's best practices for nutritional content



80%

of parents/guardians completing a survey reported Buddy Packs helped meet their basic needs



1519

Boone County children participated in the Buddy Pack Program

THE FOOD BANK FOR CENTRAL AND NORTHEAST MISSOURI, INC.

Amount Received:

\$24,999.84

School Pantries Program

The School Pantries Program provides a discrete way for middle and high school students experiencing food insecurity to access supplemental food. Pantries are located on school grounds to allow for a more readily accessible food source for students and their families.

IS ANYONE BETTER OFF?



53%

of food distributed met Feeding America's best practices for nutritional content



80%

of participants reported accessing the School Pantry helped meet their basic needs



735

Boone County children utilized their school pantry

UNIVERSITY OF MISSOURI - DEPARTMENT OF PSYCHIATRY

Amount Received:

\$748,983.03

MU Bridge Program: School-Based Psychiatry

The MU Bridge Program provides school-based psychiatric services and nurse case management for Boone County children and adolescents who need psychiatry services. The goal of the program is to decrease the wait time for school-age children to access psychiatry services.

IS ANYONE BETTER OFF?



81%

of children participating in the MU Bridge Program demonstrated improvement in mood and/or attention, behavior, and activity level



71%

of teachers with students participating in the MU Bridge Program reported improved classroom behavior



100%

of children transitioned to established ongoing care

FAMILY ACCESS CENTER OF EXCELLENCE (FACE)

Amount Received:

\$3,272,920.74

- FACE was established to meet the mental health needs of all children, youth, and their families in Boone County and promote access to resources.
- FACE is a unique partnership between community and school partners.
- Programming is influenced by the FACE Board of Representatives, which includes Boone County representatives across different sectors (schools, law enforcement, court services, faith-based community, disability services, pediatrician/family practitioner, early childhood, etc.)

School-Based Services

- Regional Coordinators are assigned to all Boone County schools, including private/parochial schools, and provide services which include:
 - Administering early identification checklists to all students;
 - Providing multi-level interventions based on needs identified by the checklists;
 - Participating in problem-solving teams with school personnel;
 - Providing professional development for school personnel;
 - Offering group and individual supports (therapy, case management, etc.).
- Family Intervention Specialists are in all rural school districts and select Columbia Public School elementary buildings and provide services which include:
 - Supporting de-escalation of behavior in schools;
 - Assisting families in completing a needs-based assessment and creating an action plan to address top concerns;
 - Providing intensive therapeutic case management across systems for families;
 - Completing suicide risk assessments and safety plans with youth and their families, when needed.

IS ANYONE BETTER OFF?



25,194

students received an early identification checklist



100%

of schools implemented one or more evidence-based interventions



79%

of students receiving crisis services decreased severity of top problems

Community-Based Services

- Support families in completing a needs-based assessment and assist families in creating an action plan to address top areas of concern.
- Assist families with accessing community-based resources to meet their needs.
- Complete suicide risk assessments and safety plans with youth and their families, when needed.
- Therapy Access Program (TAP) provides access to more immediate, brief support for Boone County children, youth, and families for up to ten free therapy sessions to address mental health concerns. Families can be referred to TAP through the Community-Based Services side of FACE.

IS ANYONE BETTER OFF?



65%

of individuals decreased severity of top problems



77%

of individuals engaged with outside providers



89%

of individuals referred from the juvenile justice system decreased severity of top problems

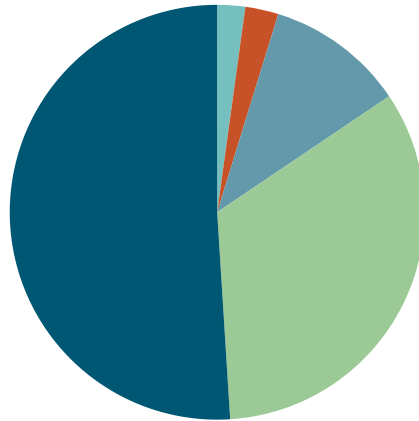
Youth & Family Support Programs

15
funded programs

Programs are designed to strengthen the family, improve parenting practices, and support healthy development for children.



2,697
individuals were served through BCCSD funding



TOTAL PROGRAM FUNDING

- Education (2%)
- Health & Medical (3%)
- Organizational Capacity Building (11%)
- Supportive Services (33%)
- Social Development & Enrichment (51%)



63,852
hours of out-of-school programming funded for 672 individuals



306
individuals maintained or improved academic proficiency



339
individuals participated in family development services

TIFFANY'S SUCCESS STORY

In the fall, a local mom reached out to Safe Families while expecting her third child. Tiffany was experiencing medical complications with her pregnancy and needed a safe place for her other two children so she could get the medical care she needed. Through the support of three different volunteer families, Tiffany's mind was put at ease, knowing her children were safe while she was in the hospital.

These families cared for her children like extended family, providing support through the delivery of her third child and continuing to offer assistance as she transitioned to having all three children at home. Tiffany was very pleased with the support she received from the volunteers, describing them as "amazing people and families; very caring, nurturing." She noted that her children had become more sociable and outgoing, ate better, and had better connections with the community thanks to the support provided by the volunteers.

Bethany Christian Services of Missouri
Safe Families for Children

JUSTIN'S SUCCESS STORY

Last year, as a freshman, Justin really struggled to connect with guys at the program and kept to himself a lot. At school, he had some discipline issues related to skipping class and being disengaged in the classroom. He had a 1.7 GPA and was just struggling to adjust to the demands of high school. Cor saw some improvement in the second semester, but he was still struggling to step up and fulfill his potential. Over the summer, Justin went to a camp with Cor staff and students and really connected. He bonded with a lot of the guys and staff members, and Cor really started to see a turning point for him.

As the school year started, Justin made a goal that he wanted to be involved and get all As. From the first day of school, he has been super plugged in and on top of everything. Justin is actively involved at the building and is one of the guys that connects with new students and shows them around. He is engaged in the classroom and has taken the initiative to communicate with all of his teachers. One teacher who has had him both years has expressed to our staff how impressed she is with him as well. At the end of the semester, he achieved his goal of getting all As!

We have a program called Academic Elite in which guys who receive certain GPAs get Cor gear and apparel. Our guys who receive what we call "Cor 4," meaning they got a 4.0, get to pick out a special item, so he just received a Cor backpack that he wanted. We are super proud of him and the ways that he has grown over the year!

Cor Columbia
Cor Columbia



1,223

hours of out-of-home
respite care funded



5,838

hours of case management
funded for 1,295 individuals



630

individuals developed
positive values, social
competencies, or identities



5,322

hours of mentoring
funded

BETHANY CHRISTIAN SERVICES OF MISSOURI

Safe Families for Children

Bethany Christian Services of Missouri provides respite services to families during a crisis to help prevent children from entering the foster care system. Case managers assist families in developing and implementing a plan to improve the situation and reduce risk factors of abuse and neglect.

Amount Received:

\$28,046.00

IS ANYONE BETTER OFF?



100%

of children remained free from child abuse and neglect



70%

of children demonstrated improved quality of the relationship with their parent/guardian



100%

of families developed a plan to meet their goals

BIG BROTHERS BIG SISTERS OF CENTRAL MISSOURI

One-on-One Mentoring with Big Brothers Big Sisters (BBBS)

Children participating in the program are matched with mentors who offer social, emotional, and academic support. The goal is to develop positive relationships that create a positive lasting effect on the lives of youth.

Amount Received:

\$60,740.87

IS ANYONE BETTER OFF?



91%

of youth answered “yes” or “definitely yes” to questions about finishing high school



81%

of youth answered “mostly true” or “true” that school is important to them



100%

of youth indicated they had not been truant in the past 12 months

BOYS AND GIRLS CLUB OF COLUMBIA AREA

Great Futures Start Here

Boys and Girls Club provides after-school and summer programming designed to empower youth to excel in school, become good citizens, and lead healthy, productive lives.

IS ANYONE BETTER OFF?



67%

of individuals made progress toward building healthy relationships with others



67%

of individuals fostered attitudes and skills aligning with healthy decision making



81%

of individuals participated in problem solving behaviors

Amount Received:

\$230,355.48

CATHOLIC CHARITIES OF CENTRAL AND NORTHERN MISSOURI (CCCNMO)

Refugee Youth Mentoring and Academic Support Program

CCCNMO provides a weekly after-school youth program for refugee youth K-8 in partnership with the St. Thomas More Newman Center. The program provides mentoring and academic support for youth and coordinates programming between families and teachers. The goal is to enhance refugee youth's educational and social development and strengthen families.

IS ANYONE BETTER OFF?



98%

of youth maintained or increased their capacity to accomplish personal goals, have a positive outlook, and access social support



100%

of youth reported making a new friend by the end of the program



100%

of youth maintained or improved their academic performance

Amount Received:

\$41,452.76

CENTRAL MISSOURI FOSTER CARE AND ADOPTION ASSOCIATION (CMFCAA)

Amount Received:

\$6,400.80

Odyssey Respite Program

The Odyssey Respite Program provides events for children and youth who are in foster care or waiting to be adopted. The goal of the program is to decrease family stress, increase social skills, and strengthen relationships.

IS ANYONE BETTER OFF?



100%

of parents/guardians reported respite events enhance their emotional wellbeing



90%

of youth reported making a positive connection with a peer



100%

of parents/guardians reported respite events made a difference in keeping their foster, adoptive, and/or kinship placement stable

CENTRAL MISSOURI FOSTER CARE AND ADOPTION ASSOCIATION (CMFCAA)

Amount Received:

\$47,205.45

Family Crisis Stabilization Program

CMFCAA provides training and support services to help increase and maintain the number of licensed foster, adoptive, relative, and kinship families in Boone County.

IS ANYONE BETTER OFF?



45%

of participants became licensed foster parents



63

individuals were approved to become adoptive parents



228

individuals were trained in CPR/First Aid

CHA LOW-INCOME SERVICES, INC.

Healthy Home Connections

The program provides case management and family development events for families receiving housing assistance from the Columbia Housing Authority (CHA). The goal is to help families make progress on goals and maintain housing stability.

Amount Received:

\$125,120.97

IS ANYONE BETTER OFF?



97%

of families maintained their housing



90%

of families developed goals through a Family Service Pledge



42%

of families increased their income or secured a job

CHA LOW-INCOME SERVICES, INC.

Moving Ahead After-School and Summer Program (MAP)

MAP provides education enrichment for children and youth of families who receive housing assistance from the CHA. The Boone County Children's Services Fund supports out-of-school programming for youth and support services for their families.

Amount Received:

\$130,660.00

IS ANYONE BETTER OFF?



100%

of students scored medium to high on reading efficacy



95%

of students were optimistic about their future



100%

of participants reported having healthy relationships with family members/caregivers

COR COLUMBIA

Cor Columbia

- Cor holistically serves male student athletes, working to transform futures by providing access to opportunities and resources students need to succeed. The
- goal of the program is to use academics, relationships, and life skills to help students create a pathway to a post-secondary plan following high school.

Amount Received:

\$188,954.61

IS ANYONE BETTER OFF?



99%

of students
were on track
to graduate



92%

of seniors
established post-
secondary plans



100%

of youth reported
having a
supportive adult
in their life

COYOTE HILL

Family Enrichment Program

Coyote Hill provides supervised visits for a child and their biological family while they are separated. The goal is to offer a safe environment to help the family bond. Coyote Hill also provides training to create more licensed foster homes and provide ongoing support to foster families.

Amount Received:

\$155,763.50

IS ANYONE BETTER OFF?



82%

of biological families
made progress on
achieving/maintaining
permanency by attending
supervised visits



87%

of biological
parents gained
positive parenting
skills



76%

of foster, adoptive,
and/or kinship
families reported
services helped keep
placement stable



DIARA RANDELL
4TH GRADE, COLUMBIA

FUN CITY YOUTH ACADEMY

Fun City Youth Academy

Fun City Youth Academy provides out-of-school programming and academic instruction. The goal is to help students perform at grade-level proficiency in reading and math. The program also supports mental health and positive self-image.

Amount Received:

\$97,271.96

IS ANYONE BETTER OFF?



63%

of students maintained or increased their educational performance in reading



73%

of students maintained or increased their educational performance in math



79%

of students demonstrated an increase in their self-esteem and positive self-image

HEART OF MISSOURI CASA

CASA Child Advocacy

Heart of Missouri CASA provides child advocacy services for children involved in abuse and neglect court cases. Services are provided by trained volunteers to help find safe, permanent homes for children who have been abused or neglected.

Amount Received:

\$242,129.00

IS ANYONE BETTER OFF?



89%

of children with a
CASA volunteer
achieved a
permanent
outcome upon case
closure



97%

of the CASA
volunteers'
recommendations
were accepted by
the Family Court
Judge



98%

of children with a
CASA volunteer
remained free from re-
abuse while in foster
care

PRESBYTERIAN CHILDREN'S HOMES AND SERVICES

Elevate Mentoring

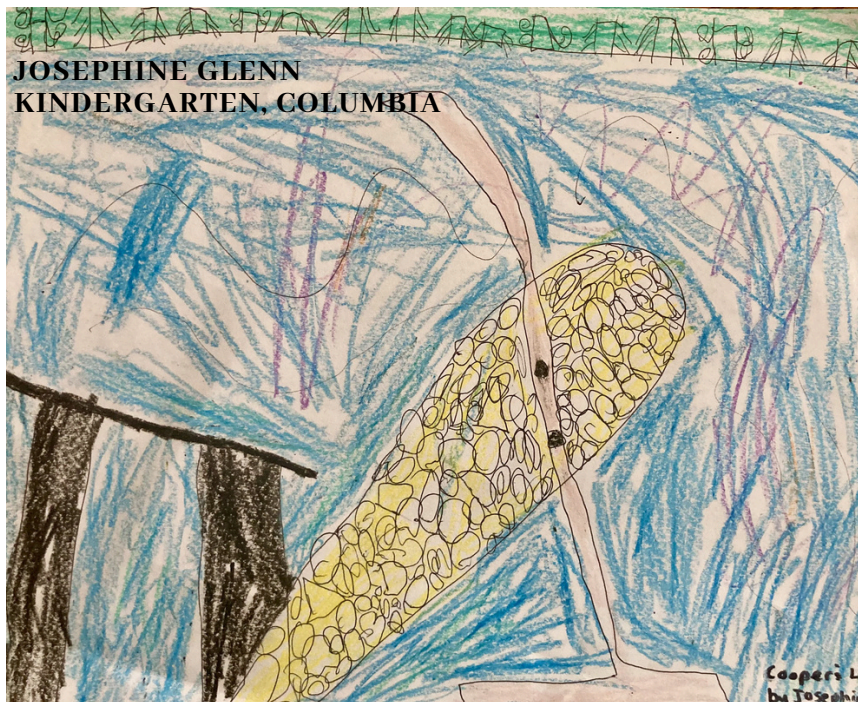
Trained mentors support youth to attain goals and reduce risk factors through community-based mentoring. The goal is for youth to create positive connections in the community and improve coping skills, pro-social behaviors, and self-esteem.

HOW MUCH DID WE DO?

The program has struggled to offer community-based and school-based mentoring since the COVID-19 pandemic began. Staff turnover has also impacted the ability to recruit participants for the program and deliver services. The program had one individual enroll in the program in 2023 but did not continue services due to varying circumstances. The Boone County Children's Services Board did not renew the contract for 2024.

Amount Received:

\$331.25



RAINBOW HOUSE

Children's Emergency Shelter

The Children's Emergency Shelter provides respite care and emergency shelter services for children. By providing a safe place for children during times of crisis, the Shelter's services often prevent situations of abuse or neglect. Rainbow House also provides parenting skills education to at-risk parents and families to diminish child abuse and neglect.

Amount Received:

\$38,880.50

IS ANYONE BETTER OFF?



96%

of children developed positive values, social competencies, and positive identities



59%

of participants developed and made progress toward goals to address identified needs



84%

of participants reported a reduction in overall stress levels, reducing risk for abuse/neglect

UNIVERSITY OF MISSOURI - DEPARTMENT OF OCCUPATIONAL THERAPY

SWIM: Swimming and Water Instructions Modifications

The goal of the SWIM Program is to increase understanding of water safety, provide opportunities for participation in community-based recreational programming, and improve access to age-appropriate physical activity for children with autism spectrum disorders.

Amount Received:

\$37,517.12

IS ANYONE BETTER OFF?



95%

of children developed in a specific swim stroke



85%

of children increased their swimming skills



100%

of parents learned new strategies for water safety and drowning prevention

Treatment Programs

8

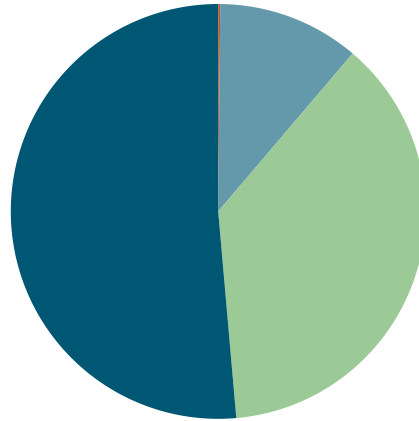
funded programs

Programs provide physical and mental health treatment to children, youth, parents, families, and adults.



958

individuals were served through BCCSD funding



TOTAL PROGRAM FUNDING

- Social Development & Enrichment (<1%)
- Community Advancement (<1%)
- Organizational Capacity Building (11%)
- Supportive Services (37%)
- Health & Medical (51%)



377

behavioral health assessments funded



3,284

hours of therapy funded



260

individuals successfully managed mental, emotional, and/or behavioral health conditions

CHILD PARENT PSYCHOTHERAPY (CPP) TESTIMONIAL

"Please let me start by saying that I can't say enough good things about the services and providers of Child Parent Psychotherapy. My two grandsons were removed from their home due to abuse allegations. We had no idea the impact on them living in a home full of chaos, drug use, physical, verbal, and emotional abuse. We were on the CPP waiting list for 6 months, during which they supplied resources for us to use before we could get in. However, during that time, we still dealt with tantrums, aggressive behaviors, nightmares, and all daily activities turned into an ordeal. Once we got to see the therapist, everything began to change! Everything! We've learned how to negotiate bedtime, the importance of schedules and routines, and the importance of a secure relationship. During the few months we've been coming, the boys have blossomed. They love, and I do mean love, their weekly "meetings." Their CPP therapist has truly been a godsend for our family. The boys are thriving! They have learned how to self-regulate, that they matter, and that all their emotions are okay. The staff is always so encouraging. They all make over the boys when they get there. They are doing so much better. They are both happy, playful, doing great in school, and we are so thankful for CPP."

MU Department of Psychiatry
Child Parent Psychotherapy (CPP)

MULTI-SYSTEMIC THERAPY (MST) TESTIMONIAL

“As our adopted son reached his early teenage years, he became more difficult to live with and challenging to love. He didn't care about school, seemed absorbed only in himself, and we felt there was some depression as well. He had an ADHD diagnosis but wouldn't take the medication regularly, and we felt like we were living with the repercussions of the highs, lows, and anger of an unhappy teenager. My husband and I had different approaches to parenting, and I felt a heavy burden to take care of our child and to turn the situation around. We contemplated military school or other forms of boarding schools, but that didn't feel like the right solution. I was in tears a lot, feeling hurt and frustrated with the relationships in our home. I tried counseling for my son and myself, but couldn't get my husband on board to be involved due to work and time constraints.

I was referred to MST through FACE of Boone County. They connected me to Heriford House, and we were assigned an MST therapist. I watched a short introductory video on MST and was immediately drawn to the whole family and community approach. Our therapist wasn't a young person just out of college; we had a professional in our home helping us set up expectations and consequences that everyone could agree to. The MST therapist was flexible and able to Zoom with my husband and me since my husband works out of the area, and she would meet with me and my son in our home.

Within a few weeks, I could feel the burden lifting as each member of our family started taking responsibility for themselves and their actions. MST changed our home and our family. We know how to talk to each other, take our own time outs when needed, and we learned our love languages so we could be better family members. MST changed our life and the trajectory our son was on. We needed help, and we found it with MST.

MST is a lot of work but so worth it... I hope this program is allowed to continue because it is very helpful.”

MU Psychological Services Clinic (subcontract with Heriford House)

MU PSC-Heriford House Stronger Youth Project: Using Evidence-Based and Culturally-Informed Intervention to Improve Outcomes for Justice-Involved and At-Risk Youth



5,808

hours of case management funded



78

individuals developed or improved healthy relationships with family members or caregivers

JENNIFER'S SUCCESS STORY

Jennifer was referred to counseling services by her legal guardians. She reported persistent sadness after being removed from her biological family due to their struggles with substance abuse. Since coming to Lutheran Family and Children's Services of Missouri (LFCS), Jennifer has engaged in Trauma-focused Cognitive Behavioral Therapy, which has helped her lower her symptoms significantly. She is thriving in her new home and considers therapy a safe space for processing returning to her biological father. She has deepened her understanding of her emotions and is learning skills to express those in a healthy way.

Lutheran Family and Children's Services of Missouri
Mental Health Counseling and Parenting Program

13TH CIRCUIT/BOONE COUNTY COURT

Child Permanency Services

Amount Received:

\$80,831.25

The 13th Circuit Court works with Family Facets to provide home visitation and parenting skills training for families with children placed out of the home. The goal is to reduce the amount of time children are placed out of the home by increasing parental readiness for reunification.

The BCCSD discovered significant data tracking and invoicing issues while reviewing the 2023 Interim Report. The program stopped providing services September 30 until issues could potentially be resolved. The sub-contracted provider was unable to provide sufficient documentation to correct invoicing issues. The Boone County Children's Services Board voted to end the contract and not renew for 2024.

IS ANYONE BETTER OFF?

No data was able to be reported due to data tracking issues.

HEARTSPACE CLINIC

Safe and Sound Protocol

Amount Received:

\$135,540.00

The Safe and Sound Protocol is an evidence-based listening therapy designed to reduce sound sensitivities. The program serves children and adults with benefits for individuals with trauma, anxiety, and sensory processing difficulties.

IS ANYONE BETTER OFF?



80%

of participants age six and older decreased trauma symptoms



81%

of participants age six and older decreased anxiety symptoms



93%

of parents implementing nervous system informed parenting strategies noticed an improvement in their child(ren)

KVC MISSOURI (PREVIOUSLY GREAT CIRCLE)

Amount Received:

\$124,192.52

HOPE: Healing-Opportunity-Prevention-Education

HOPE provides prevention services for Boone County children and families prior to abuse, neglect, and/or traumatizing removal of a child from their home. The program provides home visiting and therapeutic services with the goal of preventing child abuse and neglect, improving parent-child relationships, and reducing the risk of out-of-home placement.

IS ANYONE BETTER OFF?



89%

of individuals experienced a reduction in negative mental health symptoms



86%

of families showed reduction of risk for abuse and neglect



84%

of children reported an improved relationship with their family

LUTHERAN FAMILY AND CHILDREN'S SERVICES OF MISSOURI

Amount Received:

\$342,756.74

Mental Health Counseling and Parenting Program

The Mental Health Counseling program provides evidence-based counseling to parents, children, and families. Many clients also are involved in the Parenting Program which provides case management, home visiting, and supportive counseling for women who are pregnant or parents of young children.

IS ANYONE BETTER OFF?



78%

of adults decreased or maintained depression symptoms



95%

of children maintained or improved relationships with their family members



87%

of individuals made progress toward reducing risk factors for child abuse and neglect

UNIVERSITY OF MISSOURI - DEPARTMENT OF PSYCHIATRY

Child Permanency Services (CPP)

The primary goal of CPP is to support and strengthen the relationship between a child and their caregiver after a traumatic event has taken place. CPP is used as a vehicle for restoring the child's cognitive, behavioral, and social functioning through therapeutic treatment and focuses on the caregiver-child relationship.

IS ANYONE BETTER OFF?

Amount Received:

\$101,112.11



82%

of children had a reduction of Post-Traumatic Stress (PTS) symptoms



80%

of caregivers will have a reduction in depressive symptoms



73%

of individuals developed and made progress toward goals to address identified needs

UNIVERSITY OF MISSOURI - DEPARTMENT OF PSYCHIATRY

Child and Adolescent Sexual Treatment (CAST)

The CAST program provides therapeutic services for children ages three to 12 years old to reduce trauma and Problematic Sexual Behavior symptoms. The program provides training to providers on best practices for identifying age-appropriate sexual behaviors.

The program ended in September 2023 due to staffing changes that reduced the Department of Psychiatry's capacity to meet the program's goals and administer treatment at fidelity.

IS ANYONE BETTER OFF?

Amount Received:

\$67,689.45



8

individuals received clinical case management



21

individuals trained in best practices to identify age-appropriate sexual behaviors



100%

of trained individuals improved or maintained knowledge on best practices topics

UNIVERSITY OF MISSOURI - PSYCHOLOGICAL SERVICES CLINIC

MU Psychological Services Clinic, Center for Evidence-Based Youth Mental Health

The program provides evidence-based assessment and treatment for children, adolescents, and their families for a variety of emotional and behavioral difficulties. Training and workshops on evidence-based practices are also offered to community mental health providers.

Amount Received:
\$265,286.00

IS ANYONE BETTER OFF?



74%

of individuals showed improvements in mental and behavioral health conditions



85%

of individuals showed improvement in adaptive functioning



71%

of individuals showed improvement in caregiver-reported symptoms

UNIVERSITY OF MISSOURI - PSYCHOLOGICAL SERVICES CLINIC

MU PSC-Heriford House Stronger Youth Project: Using Evidence-Based and Culturally-Informed Intervention to Improve Outcomes for Justice- Involved and At-Risk Youth

The program joins the expertise of the MU Psychological Services Clinic (PSC) and The Heriford House to provide evidence-based interventions to youth with or at imminent risk for involvement with the juvenile justice system. The interventions include Multi-systemic Family Therapy (MST) and a Racial Healing therapy group.

Amount Received:
\$346,322.16

IS ANYONE BETTER OFF?



67%

of individuals showed improvements in mental health conditions



69%

of individuals improved involvement with personal and property crimes



62%

of individuals showed improvement in family cohesion

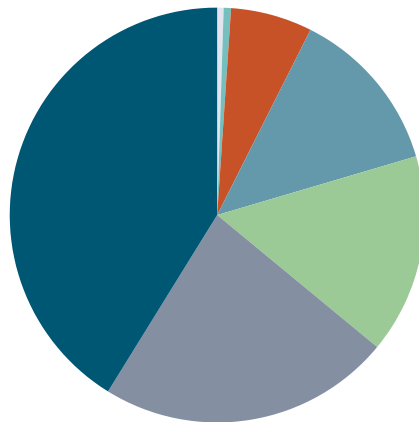
Community Support & Basic Needs Programs

11
funded programs

Programs included provision of basic needs, vocational training, emergency shelter, health education, and services to support independent living for seniors.



28,997
individuals were served through BCCSD funding



TOTAL PROGRAM FUNDING

- Organizational Capacity Building (1%)
- Social Development & Enrichment (1%)
- Community Advancement (6%)
- Income Support & Employment (13%)
- Education (16%)
- Supportive Services (23%)
- Basic Needs (41%)



27,098
individuals supported to receive basic needs items



5,185
hours of case management and service coordination funded



1,968
hours of job and vocational training funded

NATASHA'S SUCCESS STORY

In early August 2023, Natasha contacted the Voluntary Action Center to inquire about school supplies for her son, who was entering 5th grade in the fall. A recent financial crisis had made it difficult for her family to afford the necessary items. Both Natasha and her husband are veterans, and her husband is unable to work due to multiple surgeries he has undergone. Natasha was already familiar with some of VAC's services from her time as a social worker. She expressed that it was a humbling experience to ask for help from an agency she used to refer her clients to. VAC's social services specialist assured her that the hardships she was facing were exactly what VAC is here to help with. Natasha stated she was extremely grateful for any assistance VAC could offer her family, especially for her son. An appointment was scheduled for the following day for Natasha to pick up a check for a birth certificate and a backpack filled with school supplies for her son. Additionally, VAC provided a \$20 gasoline voucher, household cleaning supplies, toilet paper, and a Wardrobe clothing referral for her family.

Voluntary Action Center (VAC)
VAC Basic Needs Program

JASON'S SUCCESS STORY

Jason enrolled at Job Point at the encouragement of one of his high school teachers. She noticed that he was really struggling and was on the verge of dropping out. Things were dire in his life outside of school. He wasn't sleeping well, he couldn't focus on doing his work. He had just lost his brother and was getting in trouble with the law. During this transitional time, he also decided that it would be safer for him to move out of his home and sleep in his truck.

"It was hard to focus at school because I had so much going on at home," Jason said.

At first he wasn't sure if Job Point was going to be a better fit than school, but he quickly realized this was where he needed to be. Jason earned his high school diploma at Job Point and went straight into our Highway Heavy Construction course where he also earned his Flagger's Certificate and when he turned 18, his Commercial Driver's License (CDL). Jason leveraged his newly earned diploma, certifications and license to get a job and move out of his truck and into a home again.

"I'm just so glad I came to Job Point," Jason said. "I don't know where I would be if I had not come here. They helped me get my diploma, my CDL and my job."

Job Point
AmeriCorps

SIMON AND JENNIFER'S SUCCESS STORY

Simon and Jennifer are from southeast Missouri. They have two young children and another due in April 2024. After they lost everything in a house fire, they moved to mid-Missouri where Simon has family to start over and put down new roots. Finding a home, though, ended up being extremely hard. The four of them lived in a homeless shelter in Jefferson City for a couple of months and then moved to Columbia after they were unable to find employment there. The family had run out of options and contacted Love Columbia for help. Love Columbia covered their hotel room for several weeks until a family room opened up at Harbor House in late October.

Once shelter was secure, it was easier to work on finding employment. Jennifer was offered a full-time job at a local hospital as a Certified Nursing Assistant (CNA). The hospital is 3 miles from Harbor House, and Jennifer didn't have a vehicle, so she walked to work each day. Love Columbia staff secured Jennifer a bike through Bike to the Future so she could get to work. Simon also found employment within walking distance of Harbor House. Simon and Jennifer took turns taking their girls to daycare. Simon would push their stroller and then walk to his job, or Jennifer would pull them behind her bike in a trailer.

Simon and Jennifer were approved by a landlord but hadn't been at their jobs long enough to save for the deposit and first month's rent. Love Columbia paid their deposit and advocated with other community agencies to secure their first and second months' rent, setting Simon and Jennifer up for success by allowing them time to develop a budget and prepare to pay rent on their own. They moved into a safe and stable home for their children and new baby in December. Because the home's location was not as centrally located, Love Columbia secured Simon and Jennifer a donated vehicle to help them maintain employment, access childcare, and medical support.

Love Columbia
Path Forward

COLUMBIA CENTER FOR URBAN AGRICULTURE

Doctor's Orders: Produce Prescription Program

People with low income who are at risk for or currently have diet-related chronic diseases can receive a six-month "prescription" for fruits and vegetables at the Columbia Farmers Market. The goal is to reduce health care use and expenses by increasing fruit and vegetable consumption and food security.

Amount Received:

\$93,081.15

IS ANYONE BETTER OFF?



98%

of individuals using their produce prescription reported an improvement in their health or their family's health



95%

of individuals reported being better able to afford fresh fruits and vegetables



98%

of individuals reported an increase in their fruit and vegetable consumption

COLUMBIA CENTER FOR URBAN AGRICULTURE

Opportunity Gardens

CCUA teaches low-income families how to grow their own produce and how to prepare healthy meals through the Opportunity Gardens program.

Amount Received:

\$71,570.44

IS ANYONE BETTER OFF?



75%

of individuals reported they always eat the food grown in their garden



97%

of individuals reported they spent less money on food because they eat from their garden



88%

of individuals reported achieving one of their self-identified goals

THE FOOD BANK FOR CENTRAL AND NORTHEAST MISSOURI, INC.

Amount Received:

\$65,000.12

Central Pantry - Children's Supplemental Food Program

The Central Pantry provides food and groceries to those in need in Boone County. The goal of this program is to reduce food insecurity by providing supplemental food to low-income individuals in Boone County and increase access to nutritious foods by distributing foods such as fresh produce, protein and dairy.

IS ANYONE BETTER OFF?



88%

of survey respondents agreed or strongly agreed that receiving food from the pantry gave them a meal when they otherwise wouldn't have had one



94%

of survey respondents agreed or strongly agreed that receiving food from the pantry helped their household eat more healthfully

FOSTERING LIFE-CHANGING OPPORTUNITIES (FLOURISH)

Amount Received:

\$59,131.12

Flourish Prep Internship Program

The program offers paid internships at Veterans United that include professional development and supportive services. Funding from the Boone County Children's Services Fund supports case management offered to interns and hosts safe community events for youth. The goal is to improve economic and social mobility for marginalized youth.

IS ANYONE BETTER OFF?



100%

of interns obtained part-time employment or connected to a post-secondary education opportunity



100%

of interns who had an emergency or basic need arise during the program did not let it deter them from completing the program



92%

of interns earned the full scholarship amount possible by the end of their internship

JOB POINT

AmeriCorps

The program provides academic instruction for participants to take the High School Equivalency Test (HiSET). The goal is to support young adults in obtaining a high school diploma equivalency, leading to economic independence. Funding from the Boone County Children's Services Fund is limited to support 16 to 18-year-olds.

Amount Received:

\$161,930.25

IS ANYONE BETTER OFF?



45%

of students obtained a high school diploma or equivalent



10 laptops were purchased to serve youth housed at the Juvenile Justice Center who are working on their HiSET

JOB POINT

Columbia Builds Youth

Students participating in the Columbia Builds Youth program are dually enrolled in their public school and Job Point. The public school provides core educational courses students need to earn their high school diploma. In addition, Job Point offers vocational certificate courses and job readiness training.

Amount Received:

\$37,203.00

IS ANYONE BETTER OFF?



100%

of students enrolled in the Trades course completed the program



33%

of program graduates had obtained employment



**KENZIE HUNT
4TH GRADE, COLUMBIA**

LOVE COLUMBIA

Path Forward

The Path Forward (PF) program comes alongside individuals experiencing instability in life and helps them create a path. Case Managers work with clients to create a plan that not only addresses their immediate needs but creates sustainable long-term solutions.

IS ANYONE BETTER OFF?

Amount Received:

\$175,975.80



91%

of families who obtained permanent housing maintained their housing for at least six months



91%

of unhoused families obtained temporary housing within 30 days



86%

of participants made progress on achieving at least one goal

SUSTAINABLE FARMS AND COMMUNITIES

Amount Received:

\$66,846.64

Access to Healthy Food

The program provides a financial match for SNAP and WIC participants at the Columbia Farmers Market. The goal of the program is for individuals to experience lower rates of stress related to food insecurity and for one or more family members to experience positive changes in health status attributed to their access to fresh, local products from the market.

IS ANYONE BETTER OFF?



92%

of survey respondents reported a reduction in stress levels after enrolling in the program



68%

of survey respondents reported some sort of change in health for at least one family member



92%

of survey respondents reported an improvement in having their basic needs met

TRUE NORTH OF COLUMBIA

Amount Received:

\$22,541.00

Shelter for Victims of Domestic Violence

True North provides a safe shelter for victims of domestic and sexual violence, and their minor children, who are fleeing abusive situations. Boone County provides funding for shelters for victims of domestic violence through fees collected from civil actions, marriage licenses, and criminal cases.

HOW MUCH DID WE DO?



614

Boone County residents served



1,599

referrals made to medical, psychological, financial, educational, vocational, child care, or legal services

VOLUNTARY ACTION CENTER (VAC)

VAC Basic Needs Program

The program provides a variety of services that meet needs for assistance with health, employment, and safety for low-income Boone County residents.

Amount Received:

\$148,000.00

IS ANYONE BETTER OFF?



95%

of VAC clients surveyed reported their level of stress was significantly lowered upon receiving basic needs items



96%

of VAC clients surveyed reported their basic need was met by receiving services

WOODHAVEN

EnCircle Technologies

Operating under Woodhaven, EnCircle Technologies provides individuals with autism and other forms of neurodiversity an opportunity to learn technology and develop soft skills through classes and internships.

Amount Received:

\$109,075.07

IS ANYONE BETTER OFF?



81%

of individuals mastered skills as defined by individual class objectives



92%

of individuals improved their job interview skills



100%

of parents/guardians increased their knowledge of how to better understand and support their relative with Autism Spectrum Disorder

Community Collaboration

Bringing Results-Based Accountability to Boone County

The BCCSD received funding from the Missouri Foundation for Health to train nonprofit leaders, local leaders, elected officials/department leaders within the County, and community members in the Results-Based Accountability (RBA) framework. RBA is an action-oriented and evidence-based methodology for producing measurable improvements for individuals and communities. The framework can be used both at a community level and within organizations and programs. Training and support will be offered to those interested in RBA through 2025. The BCCSD trained 51 individuals in RBA in May 2023 and held a subsequent event called a “Learning Lab” in October 2023.

2023 State of Inclusivity Conference

The State of Inclusivity Conference is an annual one-day conference held in Columbia, Missouri, designed to bring people together to make the community and their organizations a model for inclusive excellence. The conference is organized by the Journey Toward Inclusive Excellence (JTIE), of which the BCCSD has been an active member since the committee’s inception in 2017. The JTIE received \$12,500.00 through the Boone County Children’s Services Fund’s Strategic Innovation Opportunity fund. The funding contributed towards the conference’s keynote speaker, Dr. Britt Hawthorne. Approximately 225 participants attended the conference in-person with another 44 participants joining online.

2023 The Source Summit Global – Youth Summit

The Source Summit Global is a annual multi-day gathering designed to convene community-based organizations, corporations, and faith-based communities to influence economic and social change for individuals within the community. The 2023 summit included a youth component that focused specifically on initiatives that will help support youth. The Source Summit Global received \$8,650.00 in funding through the Boone County Children’s Services Fund’s Strategic Innovation Opportunity fund. The funding was contributed toward the event to encourage youth attendance at the summit. Approximately 55 participants attended the Youth Summit.

Boone Impact Group

The Boone Impact Group (BIG) is a unique collaboration between the Columbia/Boone County Department of Public Health and Human Services, Boone County Community Services Department, Heart of Missouri United Way, Central Missouri Community Foundation, and Veterans United Foundation. This group shares information to prevent duplicating work as funders and to ensure that organizations are receiving adequate funding and support. Through this collaboration, BIG is playing a critical role in identifying resource gaps, helping organizations to maximize their services, and coordinating the strengths and abilities of the human services sector to tackle challenging social issues together.

The BIG partners have developed the Taxonomy of Services, which aligns the type and definitions of services to be consistent across local funders with the purpose of having a universal language for services being provided among organizations. BIG released common outcomes to help local funders better tell the story of how contracted services impact community-level issues and indicators. Alignment of outcomes shows the impact of services and programs across the community.

Boone Indicators Dashboard

The Boone Indicators Dashboard (BID) presents a variety of health, educational, social, economic, and housing data for issues relevant to Boone County, Missouri. The purpose of the BID project is to make this information readily available to diverse community stakeholders who require data to more effectively inform and align community planning, resource investment, and performance management and monitoring.

Please visit www.booneindicators.org for more information, BID's aspirational statements, local equity analysis, and data. This is a project of Boone County, City of Columbia, Heart of Missouri United Way, and the University of Missouri Institute of Public Policy.

Upward Mobility Action Plan

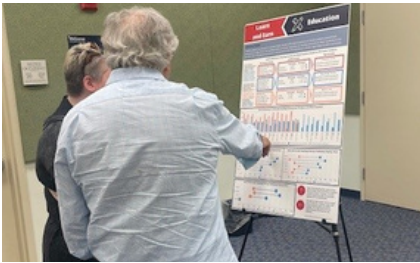
Project Overview

Boone County was one of eight counties nationwide to join the Urban Institute's Upward Mobility Cohort. Since the beginning of 2021, the Urban Institute provided awardees with funding, technical assistance, and peer learning opportunities to help communities develop a Mobility Action Plan aimed at improving upward mobility from poverty and reducing racial inequities. Boone County's Mobility Action Plan describes goals, strategies, and target outcomes for boosting mobility from poverty. The plan includes information about the project, the planning process, and strategies selected by the community to improve upward mobility from poverty.

Boone County announced the Upward Mobility award in May 2021 and held a Data Walk in August 2021. Priorities selected at the Data Walk informed the creation and direction of workgroups which would build our community's plan. Each workgroup, led by Stakeholder Facilitators, engaged in the Results-Based Accountability planning process to develop the Mobility Action Plan. Engagement and participation in planning efforts included individuals most impacted by the problem, those with lived experience, community leaders, community stakeholders, and elected officials joining as equal planning partners.

Workgroups – Result Statements

The Mobility Action Plan contained an aspirational result each group hopes to see for our community. The result statement was followed by indicators, root causes, and strategic actions.



Early Grade Literacy

All children in Boone County learn to read and see themselves as readers and writers.



Fair & Inclusive Housing

All people in Boone County have safe, quality, and affordable housing.



Jobs & Workforce Development

Boone County is a flourishing community where everyone can live, learn, and grow.

2023 Progress

The BCCSD has continued to contribute to planning, outreach, and implementation of strategic outcomes across workgroups. The BCCSD hired a Program Manager to lead the Upward Mobility project. Additionally, the BCCSD released a community report with an annual update to the Mobility Action Plan and shared the work of all workgroups. The full report and a condensed version are available at <https://www.showmeboone.com/community-services/upward-mobility.asp>.

In addition, the BCCSD and City of Columbia are conducting a county-wide housing study. The County released an RFP and contracted Amarach Planning Solutions, LLC, owned by Dr. David Boston. The contract began in January 2024 with the study to be completed by the fall of 2024. The BCCSD is providing the administrative support for the housing study and provides ongoing updates to the workgroups.

Community Services Department Staff

Joanne Nelson, Director
Kristin Cummins, Deputy Director
Verna Laboy, Program Manager
Gina Jenkins, Data and Performance Analyst
Kerby Webb, Program Diversity, Equity, and Inclusion Specialist
Michelle Thompson, Program Specialist

Former Staff Members:

D'Andre Thompson (*Program, Diversity, Equity, and Inclusion Specialist until April 2023*)
Max Carrisalez (*Intern until June 2023*)
Lenna Peterson (*Program, Diversity, Equity, and Inclusion Specialist until March 2024*)

Boone County Commissioners

Kip Kendrick, Presiding Commissioner
Justin Aldred, District I Commissioner
Janet Thompson, District II Commissioner

Boone County Children's Services Board Members

Leigh Spence, Chair
Gregory Grupe, Vice Chair
Connie Leipard, Treasurer
Robert Aulgur
Lynn Barnett
Rodney Dixon
Michele Kennett
Sebastián Martínez Valdivia
Wiley Miller

Former Board Members:

Les Wagner
Craig Stevenson



Community Services Department

605 E. Walnut, Suite A
Columbia, MO 65201
(573) 886-4298
www.showmeboone.com/communityservices

