

99 -2025

# CERTIFIED COPY OF ORDER

STATE OF MISSOURI }  
County of Boone } ea.

February Session of January Adjourned

25  
Term. 20

In the County Commission of said county, on the 20th day of February 20 25

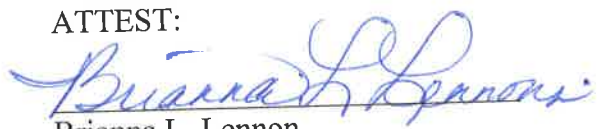
the following, among other proceedings, were had, viz:

Now on this day, the County Commission of the County of Boone does hereby approve Boone County Sheriff's Office's applications for the following 2025-2026 MoDOT Highway Safety Grants. The Presiding Commissioner is authorized to sign each application as the Authorizing Official.


- Dedicated HMV Enforcement
- Dedicated Impaired Driving Enforcement
- Impaired Driving Enforcement
- HMV Enforcement

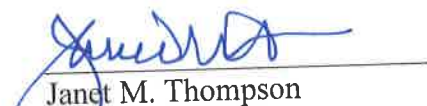
Done this 20<sup>th</sup> day of February 2025.

ATTEST:

  
Brianna L. Lennon  
Clerk of the County Commission

  
Kip Kendrick  
Presiding Commissioner

  
Justin Aldred  
District I Commissioner

  
Janet M. Thompson  
District II Commissioner



Highway Safety and Traffic Division  
P.O. Box 270  
Jefferson City, MO 65102  
1-800-800-2358 or 573-751-4161

## COUNTY AUTHORIZATION

On February 20<sup>th</sup>, 2025 the County Commission of Boone  
County discussed participation in Missouri's Highway Safety Program.

It is agreed the County should participate in Missouri's Highway Safety Program.  
It is further agreed the County Sheriff will investigate the possibilities of attaining  
financial assistance from the Highway Safety Division.

When funding from the Highway Safety Division is no longer available, the local  
government entity agrees to make a dedicated attempt to continue support for  
this traffic safety effort.

  
\_\_\_\_\_  
County Commissioner

  
\_\_\_\_\_  
County Commissioner

  
\_\_\_\_\_  
Presiding Commissioner



**Highway Safety and Traffic Division  
TRAFFIC ENFORCEMENT APPLICATION  
October 01, 2025 through September 30, 2026**

Highway Safety and Traffic Division  
P.O. Box 270  
830 MoDOT Drive  
Jefferson City, MO 65102

(Application due by March 01, 2025)

<b>Agency:</b>	Boone County Sheriff's Office	<b>Agency ORI#:</b>	MO0100000				
<b>Address:</b>	2121 County Dr.	<b>Federal Tax ID#:</b>	436000349				
		<b>DUNS #:</b>	GKUHNLX9MJJ3				
<b>City:</b>	Columbia	<b>State:</b>	MO	<b>Zip:</b>	65202-9064	<b>County:</b>	Boone
<b>Phone:</b>	573-875-1111	<b>Fax:</b>	573-874-8953				
<b>Contact:</b>	Deputy Jared Dotson	<b>Email:</b>	jdots@boonecountymo.org				
<b>Jurisdiction:</b>	Urban	<b>Jurisdiction Population:</b>	180,463				
<b>Targeted Population:</b>	All Drivers						

**Project activity for which your agency is requesting funding:**  
  
Hazardous Moving Violation

<b>Project Title:</b>	HMV Enforcement	<b>Requested Amount:</b>	\$32,430.00
<b>Brief Description:</b>	HMV Enforcement		

\_\_\_\_\_  
Kip Kendrick  
**Authorizing Official**

\_\_\_\_\_  
*Kip Kendrick*  
**Authorizing Official Signature**

\_\_\_\_\_  
**Presiding Commissioner**  
**Authorizing Official Title**

## PROBLEM IDENTIFICATION

---

---

Per the FY 24-26 Triennial Highway Safety Plan, during the last 5 years, no behavior on Missouri roadways has contributed to traffic fatalities as frequently as speed and aggressive driving. From 2017-2021, there were 2,547 fatalities involving a speeding or aggressive driver, accounting for 53% of all traffic fatalities. Speed and aggressive driving are cited in fatal crash reports as a contributing circumstance more than twice as often as impaired driving, and feedback and citation data from law enforcement agencies indicate speeds are up significantly during the last 3 years.

From 2022 to 2024, Boone County had 6,224 reported motor vehicle crashes and this number includes 57 fatal motor vehicle crashes. We know that more often than not, these motor vehicle crashes are caused, at least in part, by speeding, careless driving, inattention, or other hazardous moving violations.

When looking at the probable contributing circumstances for the 6,224 reported motor vehicle crashes there are several that stand out. Below are the various probable contributing circumstances and the number of crashes that listed them as a probable factor in the crash.

Failed to Yield: 1,251 total  
Following too Close: 973 total  
Too Fast for Conditions: 647 total  
Distracted/Inattentive: 734 total  
Improper Lane use/Change: 944 total  
Violation Signal/Sign: 399 total  
Speed - Exceeded Limit: 248 total  
Improper Turn: 167 total  
Improper Passing: 88 total  
Wrong Side (not passing): 61 total

## GOALS/OBJECTIVES

---

As outlined in the FY24-26 Triennial Highway Safety Plan, Core Performance Measure Goals:

Based on a goal of 0 fatalities by 2030, Missouri is setting a five-year average fatality target of 897.6 by December 31, 2026.

Based on a goal of 0 serious injuries by 2040, Missouri is setting a five-year average serious injury target of 4,486.1 by December 31, 2026.

Based on a goal of 0 fatalities by 2030, Missouri is setting a five-year average speed related fatality target of 293.8 by December 31, 2026.

The goal of the Boone County Sheriff's Office is to continue our commitment to decreasing hazardous moving violation driving related crashes, to include fatality crashes. During the 2025-2026 grant year, we plan to continue to utilize our Slowdown details to assist in addressing hazardous driving throughout the year. An objective is for our HMV slowdown enforcement to maintain a high profile, by conducting highly visible patrol activities.

## PROJECT DESCRIPTION

---

The Boone County Sheriff's Office is planning to perform slowdown operation enforcement details every month from October 2025 through September of 2026. These "Operation Slowdown" details will be performed throughout Boone County with concentration on known high crash areas, work zone areas, and areas with high traffic volumes.

Our intention is to schedule an average of 6 "shifts" per month that are each 4 hours in length for an average of 24 hours of enforcement per month. These six shifts may be grouped together to allow several deputies to work at the same time or they may be spread throughout the month. Our goal will be to address all observed violations with an emphasis on enforcing speeding violations and other hazardous moving violations, such as speeding, following too close, careless and imprudent driving, stop sign/red-light violations, failure to yield, and lane violations.

We have traditionally divided the "Operation Slowdown" enforcement efforts between county-maintained roadways and the state-maintained roadways to include Interstate 70 and U.S. Highway 63, which historically have had a high number of serious and fatal traffic crashes. In 2024, Boone County had 19 fatal motor vehicle crashes. Of the 19 fatal crashes, 13 of them occurred within the city of Columbia, 5 occurred on State Highways outside of the City of Columbia, and 3 occurred on county roadways. The Boone County Sheriff's Office will focus our enforcement efforts on roadways throughout Boone County.

Additionally, MoDOT has announced the "Improve I70" project with construction projected to begin as early as summer of 2024 and end in late 2027 to provide a third lane of travel for eastbound and westbound Interstate 70 from Columbia to Kingdom City. A portion of the funds requested within this application will be used for enforcement within the construction zones of this I70 project to enforce work zone speed limits, move over violations, as well as other hazardous moving violations.

We are also asking for funding to reimburse Boone County Joint Communications for cost of providing dedicated dispatcher/communications operators for HMV enforcement activities. Due to the increased workload these organized enforcement activities create for Boone County Joint Communications, they will often bring in a dedicated dispatcher/communications operator to work such a detail. We are asking for funding to cover 40 hours for dispatcher/communications operator costs throughout the grant year.

**SUPPLEMENTAL INFORMATION**

<b>Question</b>	<b>Answer</b>
<b>You must answer the following questions.</b>	
1 Does your agency have and enforce a safety belt policy for all employees/personnel?	Yes
2 Does your agency have and enforce a policy restricting cell phone use while driving?	Yes
3 Does your agency report racial profiling data annually?	Yes
4 Does your agency report to MOCARS?	Yes
5 Does your agency report MIBRS information annually?	Yes
6 Please explain any NO answer(s) to questions 1-5:	
7 Does your agency have adequate manpower to fully perform the activities, expend the funds requested, and to submit vouchers on a monthly and/or quarterly basis in this application?	Yes
8 If NO, please explain.	
9 Have any significant changes occurred with your agency within the last year that would affect performance, including personnel or system changes?	No
10 If YES, please explain.	
11 Are you aware of any fraud, waste or abuse on grant projects in your office/agency within the last 5 years?	No
12 If YES, please explain.	
13 Have any of your officers/personnel been debarred and are therefore not eligible to receive federal funds for reimbursement of salary, fringe benefits, or overtime?	No
14 If your agency received Highway Safety grant funding in the last three (3) fiscal years and there were unexpended balances, please explain why.	
<p align="center">We have experienced a small unexpended balance with our HMV grant in the past. Due to patrol staffing levels, there has been some difficulty in filling slowdown details throughout the year. We are near full staffed so hopefully we will receive volunteers to fill these details.</p>	
15 Did your political entity receive more than 80% of its annual gross revenues in Federal Awards in your preceding fiscal year?	No
16 Did your political entity receive \$25,000,000 or more in Federal Awards in your preceding fiscal year?	No

17 If you answered NO to either question 15 and 16, DO NOT answer this question. If you answered YES to both question 15 and 16, and the public does not have access to this information, list the names and compensation amounts of the five most highly compensated employees in your business or organization (the legal entity to which the UEI number it provided belongs).

**Please use the most current 12-months of data available for answering questions 18-23. INCLUDE ALL OF YOUR AGENCY'S STATISTICS, NOT JUST THOSE ISSUED DURING GRANT ACTIVITY.**

18 Total number of DWI violations written by your agency.	173
19 Total number of speeding citations written by your agency.	1430
20 Total number of HMV citations written by your agency.	1723
21 Total number of child safety/booster seat citations written by your agency.	5
22 Total number of safety belt citations written by your agency.	57
23 Total number of warnings issued.	8748

**Use the most current three years crash data from the Missouri State Highway Patrol (MSHP) or your internal record management system for questions 24-34.**

24 Total number of traffic crashes.	6224
25 Total number of traffic crashes resulting in a fatality.	57
26 Total number of traffic crashes resulting in a serious injury.	1742
27 Total number of speed-related traffic crashes.	895
28 Total number of speed-related traffic crashes resulting in a fatality.	25
29 Total number of speed-related traffic crashes resulting in a serious injury.	284
30 Total number of alcohol-related traffic crashes.	317
31 Total number of alcohol-related traffic crashes resulting in a fatality.	11
32 Total number of alcohol-related traffic crashes resulting in a serious injury.	101
33 Total number of unbuckled fatalities.	26
34 Total number of unbuckled serious injuries.	55

**Enter your agency's information below.**

35 Total number of commissioned law enforcement officers.	75
36 Total number of commissioned patrol and traffic officers.	69



37 Total number of commissioned law enforcement officers available for overtime enforcement.	69
38 Total number of vehicles available for enforcement.	48
39 Total number of radars/lasers.	54
40 Total number of in-car video cameras.	48
41 Total number of PBTs and/or oral fluid testing devices. Please indicate the number of each type of instrument.	
P.B.T. - 49	
Oral Fluid Testing Devices - 1	
42 Total number of Breath Instruments.	4

**The following information explains the strategies your agency will use to address the traffic crash problem. This information is considered to be the Project Description and should be specific to the crash problem.**

43 Identify primary enforcement locations.

In analyzing the 6,224 motor vehicle crashes that occurred within Boone County 2022 to 2024, 560 (9.0%) occurred on Interstate 70, 725 (11.6%) occurred on US Highways, 532 (8.5%) occurred on county roads, and 2326 (37.4 %) occurred on city streets.

Based on these numbers, and the fact that the Boone County Sheriff's Office is basically the only law enforcement agency conducting enforcement on county maintained roadways in Boone County, our slowdown operations and HMV enforcement will include enforcement efforts primarily focused on county roadways , US Highway 63, Interstate 70, various state maintained roadways within Boone County, and city streets within the City of Columbia. Enforcement efforts will be performed in high traffic areas and areas known for violations and/or crashes throughout Boone County and the City of Columbia.

44 Enter the number of enforcement periods your agency will conduct each month. 6

45 Enter the months in which enforcement will be conducted.

According to the statistics from 2022 to 2024, the frequency of crashes within Boone County ranged from 366 to 605 in any given month; therefore, the Boone County Sheriff's Office will conduct this enforcement year-round (October - September).

2022 to 2024 traffic crashes by month in Boone County:

- January - 546
- February - 507
- March - 546
- April - 536
- May - 566
- June - 480
- July - 450
- August - 604
- September - 605
- October - 562
- November - 456
- December - 366

46 Enter the days of the week in which enforcement will be conducted.

According to the statistics from 2022 to 2024, motor vehicle crashes within Boone County occur each day of the week; however, 77.5% of the crashes occurred Monday through Friday. Most of our enforcement efforts will be conducted Monday through Friday.

2022 to 2024 Traffic Crashes by day of week in Boone County:

Sunday – 613  
Monday – 853  
Tuesday – 882  
Wednesday – 1,007  
Thursday – 1,034  
Friday – 1,052  
Saturday – 771  
Unknown – 12

47 Enter the time of day in which enforcement will be conducted.

According to the statistics from 2022 to 2024, approximately 73.0% (4,547 of 6,224) of the total number of traffic crashes in Boone County occurred between the hours of 7:00 a.m. and 7:00 p.m. Based on these facts, most of our enforcement under this grant will be conducted between the hours of 7:00 a.m. and 7:00 p.m., though this may vary occasionally.

48 Enter the number of officers assigned during the enforcement period.

3

49 If equipment or supplies are requested to conduct this project, explain below why it is needed and how it will be used.

We are asking for funding for three new radar units to replace old units that are used by our deputies during traffic enforcement details. 17 of our radar units are over 15 years old. The current replacement schedule is to only replace three radar units per year.

## PROJECT EVALUATION

---

---

The MHTC will administratively evaluate this project. Evaluation will be based, at a minimum, upon the following:

1. Law enforcement compliance with state UCR, Racial Profiling, and MOCARS reporting requirements (law enforcement contracts only)
2. Timely submission of monthly reimbursement vouchers and appropriate documentation to support reimbursement for expenditures (i.e., personal services, equipment, materials)
3. Timely submission of periodic reports (i.e., monthly, quarterly) as required
4. Timely submission of the Year End Report of activity (due within 30 days after contract completion date)
5. Attaining the Goals set forth in this contract
6. Accomplishing the Objectives\* established to meet the project Goals, such as:
  - Enforcement activities (planned activities compared with actual activities)
  - Programs (number and success of programs held compared to planned programs, evaluations if available)
  - Training (actual vs. anticipated enrollment, student evaluations of the class, student test scores on course examinations, location of classes, class cancellation information)
  - Equipment purchases (timely purchase of equipment utilized to support and enhance the traffic safety effort ; documentation of equipment use and frequency of use)
  - Public awareness activities (media releases, promotion events, or education materials produced or purchased)
  - Other (any other information or material that supports the Objectives)
7. The project will be evaluated by the Highway Safety and Traffic Division through annual crash analysis

Evaluation results will be used to determine:

- The success of this type of activity in general and this particular project specifically ;
- Whether similar activities should be supported in the future; and
- Whether grantee will receive funding for future projects

The project will be evaluated by looking at the crash statistics and the enforcement conducted by the deputies assigned to the grant.

## ADDITIONAL FUNDING SOURCES

---

---

Edward Byrne Memorial Justice Assistance Grant: 2022-15PBJA-22-GG-02560-JAGX (JAG) - BCSD Awarded \$14,518.00 - 10/1/2021 - 9/30/2025

Edward Byrne Memorial Justice Assistance Grant: 2023-15PBJA-23-GG-06067-JAGX (JAG) - BCSD Awarded \$17,524.00 - 10/1/2022 - 9/30/2026

Edward Byrne Memorial Justice Assistance Grant: 2024 - 15PBJA-24-GG-05043-JAGX (JAG) - BCSD Awarded \$17,004.80 - 10/1/2023 - 9/30/2027

Missouri Internet Crimes Against Children Task Force Award number - 15PJDP-23-GK-05178-MECP Awarded \$14,000.00 for equipment and/or training, 10/03/24 - 08/31/2025

2025 State Cyber Crimes Grant (SCCG) - 2025-SCCG-001 - \$303,044.00 - 2025

**BUDGET**

<b>Category</b>	<b>Item</b>	<b>Description</b>	<b>Quantity</b>	<b>Unit Cost</b>	<b>Total</b>	<b>Match</b>	<b>Total Requested</b>
<b>Equipment</b>							
	RADAR/LIDAR	Stalker radar unit and accessories for speed enforcement	3	\$3,400.00	\$10,200.00	\$0.00	\$10,200.00
					<b>\$10,200.00</b>	<b>\$0.00</b>	<b>\$10,200.00</b>
<b>Personnel</b>							
	Overtime and/or Fringe	Overtime and fringe for Deputies working slowdown (HMV) details under this grant (approximately 288 hours).	288	\$60.00	\$17,280.00	\$0.00	\$17,280.00
	Overtime and/or Fringe	Overtime and fringe to reimburse the cost of a dedicated communications operator (dispatcher) for the slowdown (HMV) details being conducted for the grant (approximately 25 hours).	25	\$40.00	\$1,000.00	\$0.00	\$1,000.00
					<b>\$18,280.00</b>	<b>\$0.00</b>	<b>\$18,280.00</b>
<b>Training</b>							
	Professional Development	LETSAC Conference for BCSO Deputies that have assisted in fulfilling the HMV Grant funded details.	2	\$1,000.00	\$2,000.00	\$0.00	\$2,000.00
	Professional Development	MSHP Basic Crash Training	2	\$575.00	\$1,150.00	\$0.00	\$1,150.00
	Professional Development	MSHP Advanced Crash Investigation	1	\$800.00	\$800.00	\$0.00	\$800.00
					<b>\$3,950.00</b>	<b>\$0.00</b>	<b>\$3,950.00</b>
<b>Total Contract</b>					<b>\$32,430.00</b>	<b>\$0.00</b>	<b>\$32,430.00</b>

## ATTACHMENTS

---

<u>Document Type</u>	<u>Description</u>	<u>Original File Name</u>	<u>Date Added</u>
PDF	PDF Document	2023_OMB_Circular_A-133.pdf	01/15/2025



Highway Safety and Traffic Division  
P.O. Box 270  
Jefferson City, MO 65102  
1-800-800-2358 or 573-751-4161

## COUNTY AUTHORIZATION

On February 20<sup>th</sup>, 2025 the County Commission of Boone  
County discussed participation in Missouri's Highway Safety Program.

It is agreed the County should participate in Missouri's Highway Safety Program.  
It is further agreed the County Sheriff will investigate the possibilities of attaining  
financial assistance from the Highway Safety Division.

When funding from the Highway Safety Division is no longer available, the local  
government entity agrees to make a dedicated attempt to continue support for  
this traffic safety effort.

  
\_\_\_\_\_  
County Commissioner

  
\_\_\_\_\_  
County Commissioner

  
\_\_\_\_\_  
Presiding Commissioner



**Highway Safety and Traffic Division  
TRAFFIC ENFORCEMENT APPLICATION  
October 01, 2025 through September 30, 2026**

Highway Safety and Traffic Division  
P.O. Box 270  
830 MoDOT Drive  
Jefferson City, MO 65102

(Application due by March 01, 2025)

<b>Agency:</b>	Boone County Sheriff's Office	<b>Agency ORI#:</b>	MO0100000
<b>Address:</b>	2121 County Dr.	<b>Federal Tax ID#:</b>	436000349
		<b>DUNS #:</b>	GKUHNLX9MJJ3
<b>City:</b>	Columbia	<b>State:</b>	MO
		<b>Zip:</b>	65202-9064
		<b>County:</b>	Boone
<b>Phone:</b>	573-875-1111	<b>Fax:</b>	573-874-8953
<b>Contact:</b>	Deputy Jared Dotson	<b>Email:</b>	jdotson@boonecountymo.org
<b>Jurisdiction:</b>	Urban	<b>Jurisdiction Population:</b>	180,463
<b>Targeted Population:</b>	All Drivers		

**Project activity for which your agency is requesting funding:**

Hazardous Moving Violation

<b>Project Title:</b>	Dedicated HMV Enforcement	<b>Requested Amount:</b>	\$252,273.16
<b>Brief Description:</b>	Dedicated HMV Enforcement		

Kip Kendrick  
\_\_\_\_\_  
**Authorizing Official**

  
\_\_\_\_\_  
**Authorizing Official Signature**

\_\_\_\_\_  
Presiding Commissioner  
**Authorizing Official Title**



## PROBLEM IDENTIFICATION

---

Per the FY 24-26 Triennial Highway Safety Plan, during the last 5 years, no behavior on Missouri roadways has contributed to traffic fatalities as frequently as speed and aggressive driving. From 2017-2021, there were 2,547 fatalities involving a speeding or aggressive driver, accounting for 53% of all traffic fatalities. Speed and aggressive driving are cited in fatal crash reports as a contributing circumstance more than twice as often as impaired driving, and feedback and citation data from law enforcement agencies indicate speeds are up significantly during the last 3 years.

From 2022 to 2024, Boone County had 6,224 reported motor vehicle crashes and this number includes 57 fatal motor vehicle crashes. We know that more often than not, these motor vehicle crashes are caused, at least in part, by speeding, careless driving, inattention, or other hazardous moving violations.

When looking at the probable contributing circumstances for the 6,224 reported motor vehicle crashes there are several that stand out. Below are the various probable contributing circumstances and the number of crashes that listed them as a probable factor in the crash.

Failed to Yield: 1,251 total  
Following too Close: 973 total  
Too Fast for Conditions: 647 total  
Distracted/Inattentive: 734 total  
Improper Lane use/Change: 944 total  
Violation Signal/Sign: 399 total  
Speed - Exceeded Limit: 248 total  
Improper Turn: 167 total  
Improper Passing: 88 total  
Wrong Side (not passing): 61 total

## GOALS/OBJECTIVES

---

As outlined in the FY24-26 Triennial Highway Safety Plan, Core Performance Measure Goals:

Based on a goal of 0 fatalities by 2030, Missouri is setting a five-year average fatality target of 897.6 by December 31, 2026.

Based on a goal of 0 serious injuries by 2040, Missouri is setting a five-year average serious injury target of 4,486.1 by December 31, 2026.

Based on a goal of 0 fatalities by 2030, Missouri is setting a five-year average speed related fatality target of 293.8 by December 31, 2026.

The goal of the Boone County Sheriff's Office is to continue our commitment to decreasing hazardous moving violation driving related crashes, to include fatality crashes. During the 2025-2026 grant year, we plan to continue to utilize our Full-Time HMV / Traffic Unit to assist in addressing hazardous driving a regular daily basis, in addition to conducting HMV slowdown patrols throughout the year.

An objective is for our Full-Time HMV / Traffic unit to maintain a high profile, which includes outreach opportunities and highly visible patrol activities.

## PROJECT DESCRIPTION

---

The Boone County Sheriff's Office plans to continue using our Full-Time HMV/Traffic Unit personnel to combat hazardous moving violations in Boone County. If approved, this grant will fund salary and benefit costs of two members of the Traffic Unit who will be tasked with conducting HMV enforcement.

Enforcement will be performed throughout Boone County with concentration on known problem areas and areas with high traffic volumes. Deputies will primarily work between the hours of 7:00 a.m. and 7:00 p.m. Our goal will be to address all observed violations, with an emphasis on enforcing speeding violations and other hazardous moving violations, such as speeding, following too close, careless and imprudent driving, stop sign/red-light violation, failure to yield, and lane violations, to reduce the hazardous moving violation driving related crashes to include fatality crashes.

The focus of our enforcement efforts will primarily be on County Roadways, US Highway 63, Interstate 70, various state maintained roadways within Boone County, and City Streets within the City of Columbia. In 2024, Boone County had 19 fatal motor vehicle crashes. Of the 19 fatal crashes, 12 of them occurred within the city of Columbia, 5 occurred on State Highways outside of the City of Columbia and 2 occurred on county roadways. The Boone County Sheriff's Office Traffic Unit will focus their enforcement efforts on all roadways within Boone County.

Our current Dedicated Hazardous Moving Enforcement Deputies has been very successful in their enforcement efforts, therefore we would like to add a third (Sergeant) to the Dedicated Hazardous Moving Enforcement grant. 100% funding is requested the first year, 75 % funding the second year, then 50% funding the following years.

The local Law Enforcement agency responsible for traffic enforcement of the largest population within our county has recently disbanded their DWI unit and only employs one full time HMV unit. Traffic enforcement has not been a priority for this agency and their actions support this idea. A single HMV unit is not a sufficient amount of enforcement needed for the population they serve and this is reflected in the high number of crashes in the past years.

In addition to the two currently funded Dedicated Hazardous Moving Enforcement Deputies, if approved, the Sergeant would perform Hazardous Moving Enforcement just as the Dedicated Hazardous Moving Enforcement Deputies. In addition, the Sergeant would directly supervise and coordinate all Traffic Enforcement and DWI Enforcement deputies rather than have them supervised by various squad Sergeants. Along with the supervision of the four (4) Deputies, the Sergeant would be responsible for coordinating and supervising HMV and DWI enforcement details, representing the BCSO Traffic Unit as needed (e.g., advisory boards, meetings, events, etc.), grants administration (e.g., complete/submit applications, complete grant reports, etc.), and coordinate traffic enforcement efforts with our law enforcement partners.

If granted, this Sergeants position would not start until January 1, 2026 due to our budgeting process therefore the funds requested reflect this.

**SUPPLEMENTAL INFORMATION**

---



---

<b>Question</b>	<b>Answer</b>
<b>You must answer the following questions.</b>	
1 Does your agency have and enforce a safety belt policy for all employees/personnel?	Yes
2 Does your agency have and enforce a policy restricting cell phone use while driving?	Yes
3 Does your agency report racial profiling data annually?	Yes
4 Does your agency report to MOCARS?	Yes
5 Does your agency report MIBRS information annually?	Yes
6 Please explain any NO answer(s) to questions 1-5:	
7 Does your agency have adequate manpower to fully perform the activities, expend the funds requested, and to submit vouchers on a monthly and/or quarterly basis in this application?	Yes
8 If NO, please explain.	
9 Have any significant changes occurred with your agency within the last year that would affect performance, including personnel or system changes?	No
10 If YES, please explain.	
11 Are you aware of any fraud, waste or abuse on grant projects in your office/agency within the last 5 years?	No
12 If YES, please explain.	
13 Have any of your officers/personnel been debarred and are therefore not eligible to receive federal funds for reimbursement of salary, fringe benefits, or overtime?	No
14 If your agency received Highway Safety grant funding in the last three (3) fiscal years and there were unexpended balances, please explain why.	
15 Did your political entity receive more than 80% of its annual gross revenues in Federal Awards in your preceding fiscal year?	No
16 Did your political entity receive \$25,000,000 or more in Federal Awards in your preceding fiscal year?	No
17 If you answered NO to either question 15 and 16, DO NOT answer this question. If you answered YES to both question 15 and 16, and the public does not have access to this information, list the names and compensation amounts of the five most highly compensated employees in your business or organization (the legal entity to which the UEI number it provided belongs).	

Please use the most current 12-months of data available for answering questions 18-23.  
INCLUDE ALL OF YOUR AGENCY'S STATISTICS, NOT JUST THOSE ISSUED DURING GRANT  
ACTIVITY.

18 Total number of DWI violations written by your agency.	173
19 Total number of speeding citations written by your agency.	1430
20 Total number of HMV citations written by your agency.	1723
21 Total number of child safety/booster seat citations written by your agency.	5
22 Total number of safety belt citations written by your agency.	57
23 Total number of warnings issued.	8748

Use the most current three years crash data from the Missouri State Highway Patrol (MSHP)  
or your internal record management system for questions 24-34.

24 Total number of traffic crashes.	6224
25 Total number of traffic crashes resulting in a fatality.	57
26 Total number of traffic crashes resulting in a serious injury.	1742
27 Total number of speed-related traffic crashes.	895
28 Total number of speed-related traffic crashes resulting in a fatality.	25
29 Total number of speed-related traffic crashes resulting in a serious injury.	284
30 Total number of alcohol-related traffic crashes.	317
31 Total number of alcohol-related traffic crashes resulting in a fatality.	11
32 Total number of alcohol-related traffic crashes resulting in a serious injury.	101
33 Total number of unbuckled fatalities.	26
34 Total number of unbuckled serious injuries.	55

Enter your agency's information below.

35 Total number of commissioned law enforcement officers.	75
36 Total number of commissioned patrol and traffic officers.	69
37 Total number of commissioned law enforcement officers available for overtime enforcement.	69
38 Total number of vehicles available for enforcement.	48

39 Total number of radars/lasers.	54
40 Total number of in-car video cameras.	48
41 Total number of PBTs and/or oral fluid testing devices. Please indicate the number of each type of instrument. P.B.T. - 49 Oral Breath Testing Device - 1	
42 Total number of Breath Instruments.	4

The following information explains the strategies your agency will use to address the traffic crash problem. This information is considered to be the Project Description and should be specific to the crash problem.

43 Identify primary enforcement locations.

In analyzing the 6,224 motor vehicle crashes that occurred within Boone County 2022 to 2024, 560 (9.0%) occurred on Interstate 70, 725 (11.6%) occurred on US Highways, 532 (8.5%) occurred on county roads, and 2326 (37.4 %) occurred on city streets.

Based on these numbers, and the fact that the Boone County Sheriff's Office is basically the only law enforcement agency conducting enforcement on county maintained roadways in Boone County, our slowdown operations and HVM enforcement will include enforcement efforts primarily focused on county roadways, US Highway 63, US Highway 40, Interstate 70, various state maintained roadways within Boone County, and city streets within the City of Columbia. Enforcement efforts will be performed in high traffic areas and areas known for violations and/or crashes throughout Boone County and the City of Columbia.

44 Enter the number of enforcement periods your agency will conduct each month. 30

45 Enter the months in which enforcement will be conducted.

According to the statistics from 2022 to 2024, the frequency of crashes within Boone County ranged from 366 to 605 in any given month; therefore, the Boone County Sheriff's Office will conduct this enforcement year-round (October - September).

2022 to 2024 traffic crashes by month in Boone County:

- January - 546
- February - 507
- March - 546
- April - 536
- May - 566
- June - 480
- July - 450
- August - 604
- September - 605
- October - 562
- November - 456
- December - 366

46 Enter the days of the week in which enforcement will be conducted.

According to the statistics from 2022 to 2024, motor vehicle crashes within Boone County occur each day of the week; however, 77.5% of the crashes occurred Monday through Friday. Most of our enforcement efforts will be conducted Monday through Friday.

2022 to 2024 Traffic Crashes by day of week in Boone County:

Sunday – 613  
Monday – 853  
Tuesday – 882  
Wednesday – 1,007  
Thursday – 1,034  
Friday – 1,052  
Saturday – 771  
Unknown – 12

47 Enter the time of day in which enforcement will be conducted.

According to the statistics from 2022 to 2024, approximately 73.0% (4,547 of 6,224) of the total number of traffic crashes in Boone County occurred between the hours of 7:00 a.m. and 7:00 p.m. Based on these facts, most of our enforcement under this grant will be conducted between the hours of 7:00 a.m. and 7:00 p.m., though this may vary occasionally.

48 Enter the number of officers assigned during the enforcement period.

3

49 If equipment or supplies are requested to conduct this project, explain below why it is needed and how it will be used.

Vehicle and equipment are requested to outfit a new Sergeant position . A vehicle containing a mobile data terminal (MDT), dual radar unit, and necessary equipment will be used on a daily basis by our Sergeant for HMV enforcement.

## PROJECT EVALUATION

---

The MHTC will administratively evaluate this project. Evaluation will be based, at a minimum, upon the following:

1. Law enforcement compliance with state UCR, Racial Profiling, and MOCARS reporting requirements (law enforcement contracts only)
2. Timely submission of monthly reimbursement vouchers and appropriate documentation to support reimbursement for expenditures (i.e., personal services, equipment, materials)
3. Timely submission of periodic reports (i.e., monthly, quarterly) as required
4. Timely submission of the Year End Report of activity (due within 30 days after contract completion date)
5. Attaining the Goals set forth in this contract
6. Accomplishing the Objectives\* established to meet the project Goals, such as:
  - Enforcement activities (planned activities compared with actual activities)
  - Programs (number and success of programs held compared to planned programs, evaluations if available)
  - Training (actual vs. anticipated enrollment, student evaluations of the class, student test scores on course examinations, location of classes, class cancellation information)
  - Equipment purchases (timely purchase of equipment utilized to support and enhance the traffic safety effort ; documentation of equipment use and frequency of use)
  - Public awareness activities (media releases, promotion events, or education materials produced or purchased)
  - Other (any other information or material that supports the Objectives)
7. The project will be evaluated by the Highway Safety and Traffic Division through annual crash analysis

Evaluation results will be used to determine:

- The success of this type of activity in general and this particular project specifically ;
- Whether similar activities should be supported in the future; and
- Whether grantee will receive funding for future projects

The project will be evaluated by looking at the crash statistics and the enforcement done by the deputies assigned to the grant.



## ADDITIONAL FUNDING SOURCES

---

Edward Byrne Memorial Justice Assistance Grant: 2022-15PBJA-22-GG-02560-JAGX (JAG) - BCSD Awarded \$14,518.00 - 10/1/2021 - 9/30/2025

Edward Byrne Memorial Justice Assistance Grant: 2023-15PBJA-23-GG-06067-JAGX (JAG) - BCSD Awarded \$17,524.00 - 10/1/2022 - 9/30/2026

Edward Byrne Memorial Justice Assistance Grant: 2024 - 15PBJA-24-GG-05043-JAGX (JAG) - BCSD Awarded \$17,004.80 - 10/1/2023 - 9/30/2027

Missouri Internet Crimes Against Children Task Force Award number - 15PJDP-23-GK-05178-MECP Awarded \$14,000.00 for equipment and/or training, 10/03/24 - 08/31/2025

2025 State Cyber Crimes Grant (SCCG) - 2025-SCCG-001 - \$303,044.00 - 2025

**BUDGET**

<b>Category</b>	<b>Item</b>	<b>Description</b>	<b>Quantity</b>	<b>Unit Cost</b>	<b>Total</b>	<b>Match</b>	<b>Total Requested</b>
<b>Equipment</b>							
	Vehicle	Ford Interceptor to outfit a Sergeant into a new FT HMV Enforcement position.	1	\$47,819.10	\$47,819.10	\$0.00	\$47,819.10
	Other	Ford Interceptor equipment: outfitting, decals, radar, mounts, in-car camera system.	1	\$17,393.68	\$17,393.68	\$0.00	\$17,393.68
	Other	Ford Interceptor emergency equipment: light bars, siren, speakers, control box, console, mounts.	1	\$4,350.00	\$4,350.00	\$0.00	\$4,350.00
	Other	Ford Interceptor communications equipment: radios, antennas, cables.	1	\$15,013.62	\$15,013.62	\$0.00	\$15,013.62
	Other	Ford Interceptor: MDT, in-car printer, driver license scanner, router, hub, cradles, dock, cables.	1	\$7,432.37	\$7,432.37	\$0.00	\$7,432.37
					<b>\$92,008.77</b>	<b>\$0.00</b>	<b>\$92,008.77</b>
<b>Personnel</b>							
	Salary and/or Fringe	1387 hours of dedicated HMV enforcement for new Sergeant position. Rate includes salary and fringe. Prorated to start Jan 1 2026.	1	\$63,593.72	\$63,593.72	\$0.00	\$63,593.72
	Salary and/or Fringe	Deputy # 1 - 2,080 Hours of Dedicated HMV enforcement which includes salary and fringe.	1	\$95,130.96	\$95,130.96	\$47,565.48	\$47,565.48

	Salary and/or Fringe	Deputy # 2 - 2,080 Hours of Dedicated HMV enforcement which includes salary and fringe.	1	\$94,210.37	\$94,210.37	\$47,105.18	\$47,105.19
					\$252,935.05	\$94,670.66	\$158,264.39
<b>Training</b>							
	Professional Development	LETSAC Conference for Deputies who fill the Dedicated HMV position.	2	\$1,000.00	\$2,000.00	\$0.00	\$2,000.00
					\$2,000.00	\$0.00	\$2,000.00
<b>Total Contract</b>					<b>\$346,943.82</b>	<b>\$94,670.66</b>	<b>\$252,273.16</b>

## ATTACHMENTS

---

<u>Document Type</u>	<u>Description</u>	<u>Original File Name</u>	<u>Date Added</u>
PDF	PDF Document	2023_OMB_Circular_A-133.pdf	01/15/2025



Highway Safety and Traffic Division  
P.O. Box 270  
Jefferson City, MO 65102  
1-800-800-2358 or 573-751-4161

## COUNTY AUTHORIZATION

On February 20<sup>th</sup>, 2025 the County Commission of Boone  
County discussed participation in Missouri's Highway Safety Program.

It is agreed the County should participate in Missouri's Highway Safety Program.  
It is further agreed the County Sheriff will investigate the possibilities of attaining  
financial assistance from the Highway Safety Division.

When funding from the Highway Safety Division is no longer available, the local  
government entity agrees to make a dedicated attempt to continue support for  
this traffic safety effort.

  
\_\_\_\_\_  
County Commissioner

  
\_\_\_\_\_  
County Commissioner

  
\_\_\_\_\_  
Presiding Commissioner



**Highway Safety and Traffic Division  
TRAFFIC ENFORCEMENT APPLICATION  
October 01, 2025 through September 30, 2026**  
(Application due by March 01, 2025)

Highway Safety and Traffic Division  
P.O. Box 270  
830 MoDOT Drive  
Jefferson City, MO 65102

<b>Agency:</b>	Boone County Sheriff's Office	<b>Agency ORI#:</b>	MO0100000
<b>Address:</b>	2121 County Dr.	<b>Federal Tax ID#:</b>	436000349
		<b>DUNS #:</b>	GKUHNLX9MJJ3
<b>City:</b>	Columbia	<b>State:</b>	MO
		<b>Zip:</b>	65202-9064
		<b>County:</b>	Boone
<b>Phone:</b>	573-875-1111	<b>Fax:</b>	573-874-8953
<b>Contact:</b>	Deputy Jared Dotson	<b>Email:</b>	jdotson@boonecountymo.org
<b>Jurisdiction:</b>	Urban	<b>Jurisdiction Population:</b>	180,463
<b>Targeted Population:</b>	Impaired Drivers		

**Project activity for which your agency is requesting funding:**  
Impaired Driving

<b>Project Title:</b>	Dedicated Impaired Driving Enforcement	<b>Requested Amount:</b>	\$90,914.33
<b>Brief Description:</b>	Dedicated Impaired Driving Enforcement		

\_\_\_\_\_  
Kip Kendrick  
**Authorizing Official**

  
\_\_\_\_\_  
**Authorizing Official Signature**

\_\_\_\_\_  
Presiding Commissioner  
**Authorizing Official Title**

## PROBLEM IDENTIFICATION

---

Per the FY24-26 Triennial Highway Safety Plan, substance-impaired drivers contributed to 22% of Missouri's traffic crash fatalities during the past five years. Alcohol remains the primary contributor to substance-impaired driving crashes; however, the number of persons under the influence of prescription medications and/or illicit drugs has increased significantly over the past decade. With recreational marijuana now legal in Missouri, there are concerns this trend will continue.

Male drivers were more likely than females to be involved in substance-impaired driving crashes. During the past five years, males were responsible for 81.7% of substance-impaired driving fatalities. Ten percent of the children less than 15 years of age, who were killed in motor vehicle crashes over the last five years, were riding with a substance-impaired driver.

Depending on the jurisdiction, impaired driving offenses in Missouri are prosecuted differently. Prosecutors and judges may not always be aware of the severity of the impaired driving problem or how to best provide treatment for an offender.

In the past three years (2022-2024) there have been 6,224 reported crashes (total number investigated by all agencies) in Boone County. Of those 6,224 crashes, 317 were Drinking-Involved crashes and 359 were Drinking and/or Drug Involved crashes. Of the 317 Drinking-Involved crashes, 101 of the crashes involved injury and 11 were fatal. Of the 359 Drinking and/or Drug Involved crashes, 123 of the crashes involved injury and 17 involved a fatality.

Boone County and the City of Columbia, which is the county seat, consistently have problems with Drinking-Involved crashes. Below are some of the rankings (2021-2023), which show how Boone County and the City of Columbia compare to the rest of the Missouri counties and cities when it comes to drinking-involved crashes.

- Alcohol Involved Traffic Crashes - Boone County ranked 8th (359) / City of Columbia ranked 6th (231)
- Disabling Alcohol Involved Traffic Crashes - Boone County ranked 10th (29) / City of Columbia ranked 6th (17)
- Fatal Alcohol Involved Traffic Crashes - Boone County ranked 7th (11) / City of Columbia ranked 3rd (5)

In 2024, the Boone County Sheriff's Office made at least 173 arrests for DWI. In 2024, Boone County experienced 88 total crashes involving drinking and/or drugs, 5 fatal drinking/drug-involved motor vehicle crashes (5 total deaths), 36 personal injury drinking/drug-involved crashes (62 persons injured), and 47 property damage drinking/drug-involved crashes.

Our continued efforts have driven down drinking and/or drugs involved crashes. In 2023, Boone County experienced 147 total crashes involving drinking and/or drugs, 7 fatal drinking/drug-involved motor vehicle crashes (8 total deaths), 54 personal injury drinking/drug-involved crashes (65 persons injured), and 86 property damage drinking/drug-involved crashes.

Impaired driving continues to be a serious problem in Boone County.

## GOALS/OBJECTIVES

---

As outlined in the FY24-26 Triennial Highway Safety Plan, Core Performance Measure Goal:

Based on a goal of 0 fatalities by 2030, Missouri is setting a five-year average alcohol-involved fatality target of 232.6 by December 31, 2026.

The goal of the Boone County Sheriff's Office is to continue our commitment to combating impaired driving and support the state goal of decreasing impaired driving fatalities annually. During the 2025-2026 grant year, we plan to continue to utilize our Full-Time DWI / Traffic Unit to assist in addressing impaired driving on a regular nightly basis, in addition to conducting DWI saturation patrols throughout the year.

An objective is for our Full-Time DWI / Traffic unit to maintain a high profile, which includes outreach opportunities and highly visible patrol activities.



## PROJECT DESCRIPTION

---

---

The Boone County Sheriff's Office plans to continue using our Full-Time DWI/Traffic Unit personnel to combat impaired driving. If approved, this grant will assist in funding the salary and benefit costs of the two members of the Traffic Unit who will be tasked with conducting DWI enforcement.

Boone County continues to be one of the top-ranking counties in the state for drinking-involved traffic crashes. We believe our enforcement efforts make a difference in drinking-involved crashes and we plan to continue these efforts to address the crashes involving impaired drivers.

As described in the supplemental section, these units will primarily work evening, night, and early morning hours (between 4:00 p.m. and 4:00 a.m.) throughout the week. They will be assigned as Traffic Enforcement Deputies and primarily tasked with focusing on arresting impaired drivers throughout Boone County. They will work high traffic areas, problem roadways (like U.S. 63, Interstate 70, MO 163, etc.), and other roadways around Boone County.

## SUPPLEMENTAL INFORMATION

<u>Question</u>	<u>Answer</u>
<b>You must answer the following questions.</b>	
1 Does your agency have and enforce a safety belt policy for all employees/personnel?	Yes
2 Does your agency have and enforce a policy restricting cell phone use while driving?	Yes
3 Does your agency report racial profiling data annually?	Yes
4 Does your agency report to MOCARS?	Yes
5 Does your agency report MIBRS information annually?	Yes
6 Please explain any NO answer(s) to questions 1-5:	
7 Does your agency have adequate manpower to fully perform the activities, expend the funds requested, and to submit vouchers on a monthly and/or quarterly basis in this application?	Yes
8 If NO, please explain.	
9 Have any significant changes occurred with your agency within the last year that would affect performance, including personnel or system changes?	No
10 If YES, please explain.	
11 Are you aware of any fraud, waste or abuse on grant projects in your office/agency within the last 5 years?	No
12 If YES, please explain.	
13 Have any of your officers/personnel been debarred and are therefore not eligible to receive federal funds for reimbursement of salary, fringe benefits, or overtime?	No
14 If your agency received Highway Safety grant funding in the last three (3) fiscal years and there were unexpended balances, please explain why.	
15 Did your political entity receive more than 80% of its annual gross revenues in Federal Awards in your preceding fiscal year?	No
16 Did your political entity receive \$25,000,000 or more in Federal Awards in your preceding fiscal year?	No
17 If you answered NO to either question 15 and 16, DO NOT answer this question. If you answered YES to both question 15 and 16, and the public does not have access to this information, list the names and compensation amounts of the five most highly compensated employees in your business or organization (the legal entity to which the UEI number it provided belongs).	

Please use the most current 12-months of data available for answering questions 18-23.  
INCLUDE ALL OF YOUR AGENCY'S STATISTICS, NOT JUST THOSE ISSUED DURING GRANT  
ACTIVITY.

18 Total number of DWI violations written by your agency.	173
19 Total number of speeding citations written by your agency.	1430
20 Total number of HMV citations written by your agency.	1723
21 Total number of child safety/booster seat citations written by your agency.	5
22 Total number of safety belt citations written by your agency.	57
23 Total number of warnings issued.	8748

Use the most current three years crash data from the Missouri State Highway Patrol (MSHP)  
or your internal record management system for questions 24-34.

24 Total number of traffic crashes.	6224
25 Total number of traffic crashes resulting in a fatality.	57
26 Total number of traffic crashes resulting in a serious injury.	1742
27 Total number of speed-related traffic crashes.	895
28 Total number of speed-related traffic crashes resulting in a fatality.	25
29 Total number of speed-related traffic crashes resulting in a serious injury.	284
30 Total number of alcohol-related traffic crashes.	317
31 Total number of alcohol-related traffic crashes resulting in a fatality.	11
32 Total number of alcohol-related traffic crashes resulting in a serious injury.	101
33 Total number of unbuckled fatalities.	26
34 Total number of unbuckled serious injuries.	55

Enter your agency's information below.

35 Total number of commissioned law enforcement officers.	75
36 Total number of commissioned patrol and traffic officers.	69
37 Total number of commissioned law enforcement officers available for overtime enforcement.	69
38 Total number of vehicles available for enforcement.	48

39 Total number of radars/lasers.	54
40 Total number of in-car video cameras.	48
41 Total number of PBTs and/or oral fluid testing devices. Please indicate the number of each type of instrument.	
P.B.T. - 49	
Oral Fluid Testing Devices - 1	
42 Total number of Breath Instruments.	4

The following information explains the strategies your agency will use to address the traffic crash problem. This information is considered to be the Project Description and should be specific to the crash problem.

43 Identify primary enforcement locations.

Drinking involved traffic crashes have been occurring all around Boone County . From 2022 through 2024, (181 of 317) 57.0% of the drinking involved traffic crashes in Boone County occurred on city streets and county roads .

Our enforcement will be strongly focused on major thoroughfares in and around the City of Columbia, on county roads, and on state roadways around Boone County. Some of the roadways our unit will patrol will include Interstate 70 (4.4% of the drinking involved traffic crashes), Highway 63 (7.2% of the drinking involved traffic crashes), Missouri 763 (2.8% of the drinking involved crashes), Missouri 163 (2.5% of the drinking involved crashes), and other roadways with higher frequencies of drinking involved traffic crashes .

44 Enter the number of enforcement periods your agency will conduct each month. 30

45 Enter the months in which enforcement will be conducted.

According to the statistics from 2022-2024, the frequency of drinking involved crashes within Boone County ranged from 21 to 39 in any given month; therefore, the Boone County Sheriff's Office will conduct our enforcement year-round (October - September).

2022-2024 Drinking Involved Traffic Crashes by month in Boone County:

- January - 31
- February - 32
- March - 27
- April - 25
- May - 24
- June - 24
- July - 22
- August - 33
- September - 28
- October - 31
- November - 21
- December - 39

46 Enter the days of the week in which enforcement will be conducted.

According to the statistics from 2022 - 2024, drinking involved crashes within Boone County are likely to occur any day of the week, however, 73.5% of the drinking involved crashes occurred Thursday through Sunday, so our DWI Saturation patrols will mainly be focused on those days.

2022-2024 drinking involved traffic crashes by day of week in Boone County:

Sunday - 64  
Monday - 35  
Tuesday - 21  
Wednesday - 28  
Thursday - 37  
Friday - 48  
Saturday - 84  
Unknown - 0

47 Enter the time of day in which enforcement will be conducted.

According to the statistics from 2022-2024, 82.3% of the drinking involved crashes within Boone County occurred between the hours of 4:00 p.m. and 4:00 a.m. and 64.3% of the drinking involved crashes within Boone County occurred between the hours of 8:00 p.m. and 4:00 a.m. The enforcement efforts of the Boone County Sheriff's Office will primarily be focused on hours falling between 4:00 p.m. and 4:00 a.m.

48 Enter the number of officers assigned during the enforcement period.

2

49 If equipment or supplies are requested to conduct this project, explain below why it is needed and how it will be used.

N/A No equipment or supplies requested.

## PROJECT EVALUATION

---

---

The MHTC will administratively evaluate this project. Evaluation will be based, at a minimum, upon the following:

1. Law enforcement compliance with state UCR, Racial Profiling, and MOCARS reporting requirements (law enforcement contracts only)
2. Timely submission of monthly reimbursement vouchers and appropriate documentation to support reimbursement for expenditures (i.e., personal services, equipment, materials)
3. Timely submission of periodic reports (i.e., monthly, quarterly) as required
4. Timely submission of the Year End Report of activity (due within 30 days after contract completion date)
5. Attaining the Goals set forth in this contract
6. Accomplishing the Objectives\* established to meet the project Goals, such as:
  - Enforcement activities (planned activities compared with actual activities)
  - Programs (number and success of programs held compared to planned programs, evaluations if available)
  - Training (actual vs. anticipated enrollment, student evaluations of the class, student test scores on course examinations, location of classes, class cancellation information)
  - Equipment purchases (timely purchase of equipment utilized to support and enhance the traffic safety effort ; documentation of equipment use and frequency of use)
  - Public awareness activities (media releases, promotion events, or education materials produced or purchased)
  - Other (any other information or material that supports the Objectives)
7. The project will be evaluated by the Highway Safety and Traffic Division through annual crash analysis

Evaluation results will be used to determine:

- The success of this type of activity in general and this particular project specifically ;
- Whether similar activities should be supported in the future; and
- Whether grantee will receive funding for future projects

The project will be evaluated by looking at the drinking-involved crashes and the enforcement conducted by the deputies assigned to the grant.

## ADDITIONAL FUNDING SOURCES

---

Edward Byrne Memorial Justice Assistance Grant: 2022-15PBJA-22-GG-02560-JAGX (JAG) - BCSD Awarded \$14,518.00 - 10/1/2021 - 9/30/2025

Edward Byrne Memorial Justice Assistance Grant: 2023-15PBJA-23-GG-06067-JAGX (JAG) - BCSD Awarded \$17,524.00 - 10/1/2022 - 9/30/2026

Edward Byrne Memorial Justice Assistance Grant: 2024 - 15PBJA-24-GG-05043-JAGX (JAG) - BCSD Awarded \$17,004.80 - 10/1/2023 - 9/30/2027

Missouri Internet Crimes Against Children Task Force Award number- 15PJDP-23-GK-05178-MECP Awarded \$14,000.00 for equipment and/or training, 10/03/24 - 08/31/2025

2025 State Cyber Crimes Grant (SCCG) - 2025-SCCG-001 - \$303,044.00 - 2025

**BUDGET**

<b>Category</b>	<b>Item</b>	<b>Description</b>	<b>Quantity</b>	<b>Unit Cost</b>	<b>Total</b>	<b>Match</b>	<b>Total Requested</b>
<b>Personnel</b>							
	Overtime and/or Fringe	2,080 Hours of Dedicated DWI enforcement which includes fringe.	2	\$89,714.33	\$179,428.66	\$89,714.33	\$89,714.33
					<b>\$179,428.66</b>	<b>\$89,714.33</b>	<b>\$89,714.33</b>
<b>Training</b>							
	Professional Development	Training and conference for Dedicated Enforcement Deputies (Example: DWI/DRE Conference).	2	\$600.00	\$1,200.00	\$0.00	\$1,200.00
					<b>\$1,200.00</b>	<b>\$0.00</b>	<b>\$1,200.00</b>
<b>Total Contract</b>					<b>\$180,628.66</b>	<b>\$89,714.33</b>	<b>\$90,914.33</b>



## ATTACHMENTS

---

<u>Document Type</u>	<u>Description</u>	<u>Original File Name</u>	<u>Date Added</u>
PDF	PDF Document	2023_OMB_Circular_A-133.pdf	01/15/2025



Highway Safety and Traffic Division  
P.O. Box 270  
Jefferson City, MO 65102  
1-800-800-2358 or 573-751-4161

## COUNTY AUTHORIZATION

On February 20<sup>th</sup> 20~~25~~ the County Commission of Boone  
County discussed participation in Missouri's Highway Safety Program.

It is agreed the County should participate in Missouri's Highway Safety Program.

It is further agreed the County Sheriff will investigate the possibilities of attaining financial assistance from the Highway Safety Division.

When funding from the Highway Safety Division is no longer available, the local government entity agrees to make a dedicated attempt to continue support for this traffic safety effort.

  
\_\_\_\_\_  
County Commissioner

  
\_\_\_\_\_  
County Commissioner

  
\_\_\_\_\_  
Presiding Commissioner



**Highway Safety and Traffic Division  
TRAFFIC ENFORCEMENT APPLICATION  
October 01, 2025 through September 30, 2026**

Highway Safety and Traffic Division  
P.O. Box 270  
830 MoDOT Drive  
Jefferson City, MO 65102

(Application due by March 01, 2025)

<b>Agency:</b>	Boone County Sheriff's Office	<b>Agency ORI#:</b>	MO0100000
<b>Address:</b>	2121 County Dr.	<b>Federal Tax ID#:</b>	436000349
		<b>DUNS #:</b>	GKUHNLX9MJJ3
<b>City:</b>	Columbia	<b>State:</b>	MO
		<b>Zip:</b>	65202-9064
		<b>County:</b>	Boone
<b>Phone:</b>	573-875-1111	<b>Fax:</b>	573-874-8953
<b>Contact:</b>	Deputy Jared Dotson	<b>Email:</b>	jdotson@boonecountymo.org
<b>Jurisdiction:</b>	Urban	<b>Jurisdiction Population:</b>	180,463
<b>Targeted Population:</b>	Impaired Drivers		

**Project activity for which your agency is requesting funding:**  
  
Impaired Driving

<b>Project Title:</b>	Impaired Driving Enforcement	<b>Requested Amount:</b>	\$21,480.00
<b>Brief Description:</b>	Impaired Driving Enforcement		

Kip Kendrick  
\_\_\_\_\_  
**Authorizing Official**

  
\_\_\_\_\_  
**Authorizing Official Signature**

\_\_\_\_\_  
**Presiding Commissioner  
Authorizing Official Title**

## PROBLEM IDENTIFICATION

---

Per the FY24-26 Triennial Highway Safety Plan, substance-impaired drivers contributed to 22% of Missouri's traffic crash fatalities during the past five years. Alcohol remains the primary contributor to substance-impaired driving crashes; however, the number of persons under the influence of prescription medications and/or illicit drugs has increased significantly over the past decade. With recreational marijuana now legal in Missouri, there are concerns this trend will continue.

Male drivers were more likely than females to be involved in substance-impaired driving crashes. During the past five years, males were responsible for 81.7% of substance-impaired driving fatalities. Ten percent of the children less than 15 years of age, who were killed in motor vehicle crashes over the last five years, were riding with a substance-impaired driver.

Depending on the jurisdiction, impaired driving offenses in Missouri are prosecuted differently. Prosecutors and judges may not always be aware of the severity of the impaired driving problem or how to best provide treatment for an offender.

In the past three years (2022-2024) there have been 6,224 reported crashes (total number investigated by all agencies) in Boone County. Of those 6,224 crashes, 317 were Drinking-Involved crashes and 359 were Drinking and/or Drug Involved crashes. Of the 317 Drinking-Involved crashes, 101 of the crashes involved injury and 11 were fatal. Of the 359 Drinking and/or Drug Involved crashes, 123 of the crashes involved injury and 17 involved a fatality.

Boone County and the City of Columbia, which is the county seat, consistently have problems with Drinking-Involved crashes. Below are some of the rankings (2021-2023), which show how Boone County and the City of Columbia compare to the rest of the Missouri counties and cities when it comes to drinking-involved crashes.

- Alcohol Involved Traffic Crashes - Boone County ranked 8th (359) / City of Columbia ranked 6th (231)

- Disabling Alcohol Involved Traffic Crashes - Boone County ranked 10th (29) / City of Columbia ranked 6th (17)

- Fatal Alcohol Involved Traffic Crashes - Boone County ranked 7th (11) / City of Columbia ranked 3rd (5)

In 2024, the Boone County Sheriff's Office made at least 173 arrests for DWI. In 2024, Boone County experienced 88 total crashes involving drinking and/or drugs, 5 fatal drinking/drug-involved motor vehicle crashes (5 total deaths), 36 personal injury drinking/drug-involved crashes (62 persons injured), and 47 property damage drinking/drug-involved crashes.

Our continued efforts have driven down drinking and/or drug involved crashes. In 2023, Boone County experienced 147 total crashes involving drinking and/or drugs, 7 fatal drinking/drug-involved motor vehicle crashes (8 total deaths), 54 personal injury drinking/drug-involved crashes (65 persons injured), and 86 property damage drinking/drug-involved crashes.

Impaired driving continues to be a serious problem in Boone County.

## GOALS/OBJECTIVES

---

---

As outlined in the FY24-26 Triennial Highway Safety Plan, Core Performance Measure Goal:

Based on a goal of 0 fatalities by 2030, Missouri is setting a five-year average alcohol-involved fatality target of 232.6 by December 31, 2026.

A goal of the Boone County Sheriff's Office is to continue utilizing DWI saturation enforcement patrols throughout the year to combat impaired driving in support of the state goal of decreasing impaired driving fatalities. During the 2025-2026 grant year, the Boone County Sheriff's Office plans to conduct monthly DWI Saturation patrols.

## PROJECT DESCRIPTION

---

The Boone County Sheriff's Office plans to continue using our DWI enforcement patrols to combat impaired driving . Our intention is to schedule an average of six "shifts" per month that are each 4 hours in length for an average of 24 hours of enforcement per month. These six shifts may be grouped together to allow several deputies to work at the same time or they may be spread throughout the month. If approved, this grant will fund the overtime and fringe benefit costs of those working overtime conducting these DWI saturation enforcement patrols.

Boone County continues to be one of the top-ranking counties in the state for drinking-involved traffic crashes. We believe our enforcement efforts make a difference in drinking-involved crashes and we plan to continue these efforts to address the crashes involving impaired drivers.

As described in the supplemental section, the DWI saturation enforcement patrols will primarily work evening, night and early morning hours (between 4:00 p.m. and 4:00 a.m.) throughout the week. These DWI saturation patrols will involve deputies coming in on overtime to focus on identifying, stopping and removing impaired drivers from the roadways.

## SUPPLEMENTAL INFORMATION

<u>Question</u>	<u>Answer</u>
<b>You must answer the following questions.</b>	
1 Does your agency have and enforce a safety belt policy for all employees/personnel?	Yes
2 Does your agency have and enforce a policy restricting cell phone use while driving?	Yes
3 Does your agency report racial profiling data annually?	Yes
4 Does your agency report to MOCARS?	Yes
5 Does your agency report MIBRS information annually?	Yes
6 Please explain any NO answer(s) to questions 1-5;	
7 Does your agency have adequate manpower to fully perform the activities, expend the funds requested, and to submit vouchers on a monthly and/or quarterly basis in this application?	Yes
8 If NO, please explain.	
9 Have any significant changes occurred with your agency within the last year that would affect performance, including personnel or system changes?	No
10 If YES, please explain.	
11 Are you aware of any fraud, waste or abuse on grant projects in your office/agency within the last 5 years?	No
12 If YES, please explain.	
13 Have any of your officers/personnel been debarred and are therefore not eligible to receive federal funds for reimbursement of salary, fringe benefits, or overtime?	No
14 If your agency received Highway Safety grant funding in the last three (3) fiscal years and there were unexpended balances, please explain why.  We have experienced a substantial unexpended balance with our DWI Saturation grant in the past . Due to patrol staffing levels, there has been some difficulty in filling the saturation and slowdown details throughout the year. We are near full staffed so hopefully we will receive volunteers to fill these details .	
15 Did your political entity receive more than 80% of its annual gross revenues in Federal Awards in your preceding fiscal year?	No
16 Did your political entity receive \$25,000,000 or more in Federal Awards in your preceding fiscal year?	No

17 If you answered NO to either question 15 and 16, DO NOT answer this question. If you answered YES to both question 15 and 16, and the public does not have access to this information, list the names and compensation amounts of the five most highly compensated employees in your business or organization (the legal entity to which the UEI number it provided belongs).

**Please use the most current 12-months of data available for answering questions 18-23. INCLUDE ALL OF YOUR AGENCY'S STATISTICS, NOT JUST THOSE ISSUED DURING GRANT ACTIVITY.**

18 Total number of DWI violations written by your agency.	173
19 Total number of speeding citations written by your agency.	1430
20 Total number of HMV citations written by your agency.	1723
21 Total number of child safety/booster seat citations written by your agency.	5
22 Total number of safety belt citations written by your agency.	57
23 Total number of warnings issued.	8748

**Use the most current three years crash data from the Missouri State Highway Patrol (MSHP) or your internal record management system for questions 24-34.**

24 Total number of traffic crashes.	6224
25 Total number of traffic crashes resulting in a fatality.	57
26 Total number of traffic crashes resulting in a serious injury.	1742
27 Total number of speed-related traffic crashes.	895
28 Total number of speed-related traffic crashes resulting in a fatality.	25
29 Total number of speed-related traffic crashes resulting in a serious injury.	284
30 Total number of alcohol-related traffic crashes.	317
31 Total number of alcohol-related traffic crashes resulting in a fatality.	11
32 Total number of alcohol-related traffic crashes resulting in a serious injury.	101
33 Total number of unbuckled fatalities.	26
34 Total number of unbuckled serious injuries.	55

**Enter your agency's information below.**

35 Total number of commissioned law enforcement officers.	75
36 Total number of commissioned patrol and traffic officers.	69



37 Total number of commissioned law enforcement officers available for overtime enforcement.	69
38 Total number of vehicles available for enforcement.	48
39 Total number of radars/lasers.	54
40 Total number of in-car video cameras.	48
41 Total number of PBTs and/or oral fluid testing devices. Please indicate the number of each type of instrument.	
P.B.T. - 49	
Oral Fluid Testing Device - 1	
42 Total number of Breath Instruments.	4

**The following information explains the strategies your agency will use to address the traffic crash problem. This information is considered to be the Project Description and should be specific to the crash problem.**

43 Identify primary enforcement locations.

Drinking involved traffic crashes have been occurring all around Boone County . From 2022 through 2024, (181 of 317) 57.0% of the drinking involved traffic crashes in Boone County occurred on city streets and county roads .

Our enforcement will be strongly focused on major thoroughfares in and around the City of Columbia, on county roads, and on state roadways around Boone County. Some of the roadways our unit will patrol will include Interstate 70 (4.4% of the drinking involved traffic crashes), Highway 63 (7.2% of the drinking involved traffic crashes), Missouri 763 (2.8% of the drinking involved crashes), Missouri 163 (2.5% of the drinking involved crashes), and other roadways with higher frequencies of drinking involved traffic crashes .

44 Enter the number of enforcement periods your agency will conduct each month. 6

45 Enter the months in which enforcement will be conducted.

According to the statistics from 2022-2024, the frequency of drinking involved crashes within Boone County ranged from 21 to 39 in any given month; therefore, the Boone County Sheriff's Office will conduct our enforcement year-round (October - September).

2022-2024 Drinking Involved Traffic Crashes by month in Boone County:

- January - 31
- February - 32
- March - 27
- April - 25
- May - 24
- June - 24
- July - 22
- August - 33
- September - 28
- October - 31
- November - 21
- December - 39

46 Enter the days of the week in which enforcement will be conducted.

According to the statistics from 2022 - 2024, drinking involved crashes within Boone County are likely to occur any day of the week, however, 73.5% of the drinking involved crashes occurred Thursday through Sunday, so our DWI Saturation patrols will mainly be focused on those days.

2022-2024 drinking involved traffic crashes by day of week in Boone County:

Sunday - 64  
Monday - 35  
Tuesday - 21  
Wednesday - 28  
Thursday - 37  
Friday - 48  
Saturday - 84  
Unknown - 0

47 Enter the time of day in which enforcement will be conducted.

According to the statistics from 2022-2024, 82.3% of the drinking involved crashes within Boone County occurred between the hours of 4:00 p.m. and 4:00 a.m. and 64.3% of the drinking involved crashes within Boone County occurred between the hours of 8:00 p.m. and 4:00 a.m. The enforcement efforts of the Boone County Sheriff's Office will primarily be focused on hours falling between 4:00 p.m. and 4:00 a.m.

48 Enter the number of officers assigned during the enforcement period.

6

49 If equipment or supplies are requested to conduct this project, explain below why it is needed and how it will be used.

N/A No equipment or supplies requested.

## PROJECT EVALUATION

---

The MHTC will administratively evaluate this project. Evaluation will be based, at a minimum, upon the following:

1. Law enforcement compliance with state UCR, Racial Profiling, and MOCARS reporting requirements (law enforcement contracts only)
2. Timely submission of monthly reimbursement vouchers and appropriate documentation to support reimbursement for expenditures (i.e., personal services, equipment, materials)
3. Timely submission of periodic reports (i.e., monthly, quarterly) as required
4. Timely submission of the Year End Report of activity (due within 30 days after contract completion date)
5. Attaining the Goals set forth in this contract
6. Accomplishing the Objectives\* established to meet the project Goals, such as:
  - Enforcement activities (planned activities compared with actual activities)
  - Programs (number and success of programs held compared to planned programs, evaluations if available)
  - Training (actual vs. anticipated enrollment, student evaluations of the class, student test scores on course examinations, location of classes, class cancellation information)
  - Equipment purchases (timely purchase of equipment utilized to support and enhance the traffic safety effort ; documentation of equipment use and frequency of use)
  - Public awareness activities (media releases, promotion events, or education materials produced or purchased)
  - Other (any other information or material that supports the Objectives)
7. The project will be evaluated by the Highway Safety and Traffic Division through annual crash analysis

Evaluation results will be used to determine:

- The success of this type of activity in general and this particular project specifically ;
- Whether similar activities should be supported in the future; and
- Whether grantee will receive funding for future projects

The project will be evaluated by looking at the drinking-involved crashes and the enforcement conducted by the deputies assigned to the grant activities.

## ADDITIONAL FUNDING SOURCES

---

---

Edward Byrne Memorial Justice Assistance Grant: 2022-15PBJA-22-GG-02560-JAGX (JAG) - BCSD Awarded \$14,518.00 - 10/1/2021 - 9/30/2025

Edward Byrne Memorial Justice Assistance Grant: 2023-15PBJA-23-GG-06067-JAGX (JAG) - BCSD Awarded \$17,524.00 - 10/1/2022 - 9/30/2026

Edward Byrne Memorial Justice Assistance Grant: 2024 - 15PBJA-24-GG-05043-JAGX (JAG) - BCSD Awarded \$17,004.80 - 10/1/2023 - 9/30/2027

Missouri Internet Crimes Against Children Task Force Award number- 15PJDP-23-GK-05178-MECP Awarded \$14,000.00 for equipment and/or training, 10/03/24 - 08/31/2025

2025 State Cyber Crimes Grant (SCCG) - 2025-SCCG-001 - \$303,044.00 - 2025

**BUDGET**

<b>Category</b>	<b>Item</b>	<b>Description</b>	<b>Quantity</b>	<b>Unit Cost</b>	<b>Total</b>	<b>Match</b>	<b>Total Requested</b>
<b>Personnel</b>							
	Overtime and/or Fringe	Overtime and fringe for Deputies working DWI Saturation Patrol (Approximately 288 hours)	288	\$60.00	\$17,280.00	\$0.00	\$17,280.00
	Overtime and/or Fringe	Overtime and fringe to reimburse the cost of a dedicated Communications Operator (dispatcher) for the details being conducted for this grant (approximately 25 hours).	25	\$40.00	\$1,000.00	\$0.00	\$1,000.00
					<b>\$18,280.00</b>	<b>\$0.00</b>	<b>\$18,280.00</b>
<b>Training</b>							
	Professional Development	Training and conference for BCSO Deputies that have assisted in our traffic grant details (Example: DWI/DRE Conference).	2	\$600.00	\$1,200.00	\$0.00	\$1,200.00
	Professional Development	National DRE Conference cost for a selected DRE officer within the department to attend the conference.	1	\$2,000.00	\$2,000.00	\$0.00	\$2,000.00
					<b>\$3,200.00</b>	<b>\$0.00</b>	<b>\$3,200.00</b>
<b>Total Contract</b>					<b>\$21,480.00</b>	<b>\$0.00</b>	<b>\$21,480.00</b>

## ATTACHMENTS

---

---

<u>Document Type</u>	<u>Description</u>	<u>Original File Name</u>	<u>Date Added</u>
PDF	PDF Document	2023_OMB_Circular_A-133.pdf	01/15/2025

188-2025

# CERTIFIED COPY OF ORDER

STATE OF MISSOURI }  
County of Boone } ea.

February Session of January Adjourned

Term. 205

In the County Commission of said county, on the 20th day of February 20 25

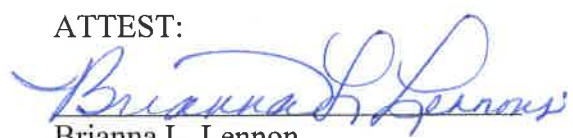
the following, among other proceedings, were had, viz:

Now on this day, the County Commission of the County of Boone does hereby approve the request for MoDOT to transfer \$200,000.00 of Boone County Soft Match Credit funds to Osage County. In exchange, Osage County will pay Boone County the cash amount of \$130,000.00.


Terms of the exchange are stipulated in the attached letter. It is further ordered the Boone County Commissioners are hereby authorized to sign said letter.

Done this 20<sup>th</sup> day of February 2025.

ATTEST:

  
Brianna L. Lennon  
Clerk of the County Commission

  
Kip Kendrick  
Presiding Commissioner

  
Justin Aldred  
District I Commissioner

  
Janet M. Thompson  
District II Commissioner



# Boone County Commission

---

February 4, 2025

Ms. Joanie Prenger  
Transportation Coordinator  
Missouri Department of Transportation  
1511 Missouri Blvd.  
P.O. Box 718  
Jefferson City, MO 65102

RE: Soft Match Credit Exchange Request

The Boone County Commission requests and directs MoDOT to transfer \$200,000.00 of our Soft Match Credit funds to Osage County.

  
\_\_\_\_\_  
Kip Kendrick  
Presiding Commissioner


  
\_\_\_\_\_  
Justin Aldred  
District I Commissioner


  
\_\_\_\_\_  
Janet M. Thompson  
District II Commissioner

Signed by Boone County on this date: February 20, 2025

In exchange, the Osage County Commission agrees to pay Boone County the cash amount of \$130,000.00.

  
\_\_\_\_\_  
Darryl Griffin  
Presiding Commissioner

  
\_\_\_\_\_  
Dale Logan  
Western District  
Commissioner

  
\_\_\_\_\_  
Jeff Peters  
Eastern District  
Commissioner

Signed by Osage County on this date: 2-6-2025



**BOONE COUNTY**  
**RESOURCE MANAGEMENT**  
Room 315  
801 East Walnut  
Columbia, Missouri 65201

Inspections 886-4339

Planning 886-4330

Receipt Number 35034

Time 15:19:00  
Date 2/11/2025

Received From OSAGE COUNTY, MISSOURI

PERMIT: Number \_\_\_\_\_ \$.00 Wastewater \_\_\_\_\_ \$.00

Permit Type: OT

**MISC. FEES & REIMBURSEMENTS**

Admin Survey	<u>\$.00</u>	Plat Fee/Prelim	<u>\$.00</u>
Re-Zonin/App	<u>\$.00</u>	Postage	<u>\$.00</u>
Copies/Public Info Rqst	<u>\$.00</u>	Public Notice	<u>\$.00</u>
Dischg Permit	<u>\$.00</u>	ROW Permit	<u>\$.00</u>
Driveway Permit	<u>\$.00</u>	MHP License	<u>\$.00</u>
Land Dist Permit	<u>\$.00</u>	Training	<u>\$.00</u>
Plan Review-Bldg Codes	<u>\$.00</u>	Plan Dev Rev Plan	<u>\$.00</u>
Conditional Use App	<u>\$.00</u>	Plan Dev Finl Plan	<u>\$.00</u>
BOA App	<u>\$.00</u>	Plats Final	<u>\$.00</u>
Reinspection Fee	<u>\$.00</u>	Recording Fees	<u>\$.00</u>
		Other	<u>\$130,000.00</u>

Comments: SOFT MATCH CREDIT TO OSAGE CO 2041-03422

Taken By KW Credit Card Fee \$.00

Total Amount \$130,000.00 Pay Type CK #77358

101 -2025

# CERTIFIED COPY OF ORDER

STATE OF MISSOURI }  
County of Boone } ea.

February Session of January Adjourned

Term. 26

In the County Commission of said county, on the 20th day of February 20 25

the following, among other proceedings, were had, viz:

Now on this day, the County Commission of the County of Boone does hereby acknowledge receipt of road construction plans filed by MoDOT pursuant to RSMo Sec. 227.050. The plans are attached to this Order and describe the Hanover Blvd / State Route PP Roundabout construction project.

Done this 20<sup>th</sup> day of February 2025.

ATTEST:

*Brianna L. Lennon*  
Brianna L. Lennon  
Clerk of the County Commission

*Kip Kendrick*  
Kip Kendrick  
Presiding Commissioner

*Justin Aldred*  
Justin Aldred  
District I Commissioner

*Janet M. Thompson*  
Janet M. Thompson  
District II Commissioner

Job Number: JST0021

Certification of Commission  
Approval of Right of Way Plans

I, Pamela J. Harlan, hereby certify, as the duly appointed and acting Secretary to the Missouri Highways and Transportation Commission, having custody of all records of the Missouri Highways and Transportation Commission, that said Commission did on the 2nd day of October 2024, approve the recommendation of Deputy Director/Chief Engineer, Ed Hassinger or his designate as to detail plans, width of right-of-way, surfaced roadway, type and character of construction and fully controlled access, to a section of state highway in Boone County, Missouri, designated as Route I-70, a highway improvement project including safety and capacity improvements, together with any incidental work on the above state road from 0.40 mile east of the Rte. 63 Connector to 0.75 mile west of the Rte. 63 Connector, Station 2091+00.00 to Station 2117+00.00, the total length being 0.492 mile, per Section 227.050 RSMo.

I further certify that the seal affixed hereto is the official seal of the Missouri Highways and Transportation Commission which can be judicially noticed by the Circuit Courts of the state under Section 226.100 RSMo.

IN TESTIMONY WHEREOF, I have hereunto set my hand and affixed the seal of said Commission at my office in Jefferson City, Missouri, this 2<sup>nd</sup> day of October, 2024.

  
Secretary to the Missouri Highways  
and Transportation Commission



**DESIGN DESIGNATION**

A.A.D.T. - 2025 = 8,100  
 A.A.D.T. - 2045 = 9,070  
 D.H.V. = 10%  
 T = 18%  
 V = 30 M.P.H.  
 D = XXV

FUNCTIONAL CLASSIFICATION-MINOR ARTERIAL

CONTROLLED ACCESS RIGHT OF WAY TO BE ACQUIRED ON THIS PROJECT (MODOT)

NORMAL RIGHT OF WAY TO BE ACQUIRED ON THIS PROJECT (MODOT)

**MISSOURI HIGHWAYS AND TRANSPORTATION COMMISSION**  
**ROADWAY AND DRAINAGE FINAL PLANS**  
**FOR PROPOSED STATE HIGHWAY**  
**HANOVER ROAD ROUNDABOUT**  
**BOONE COUNTY**  
**RIGHT OF WAY PLANS**



SECTION 09, TOWNSHIP 48 NORTH, RANGE 12 WEST

**INDEX OF SHEETS**

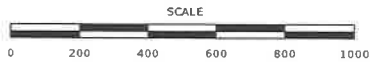
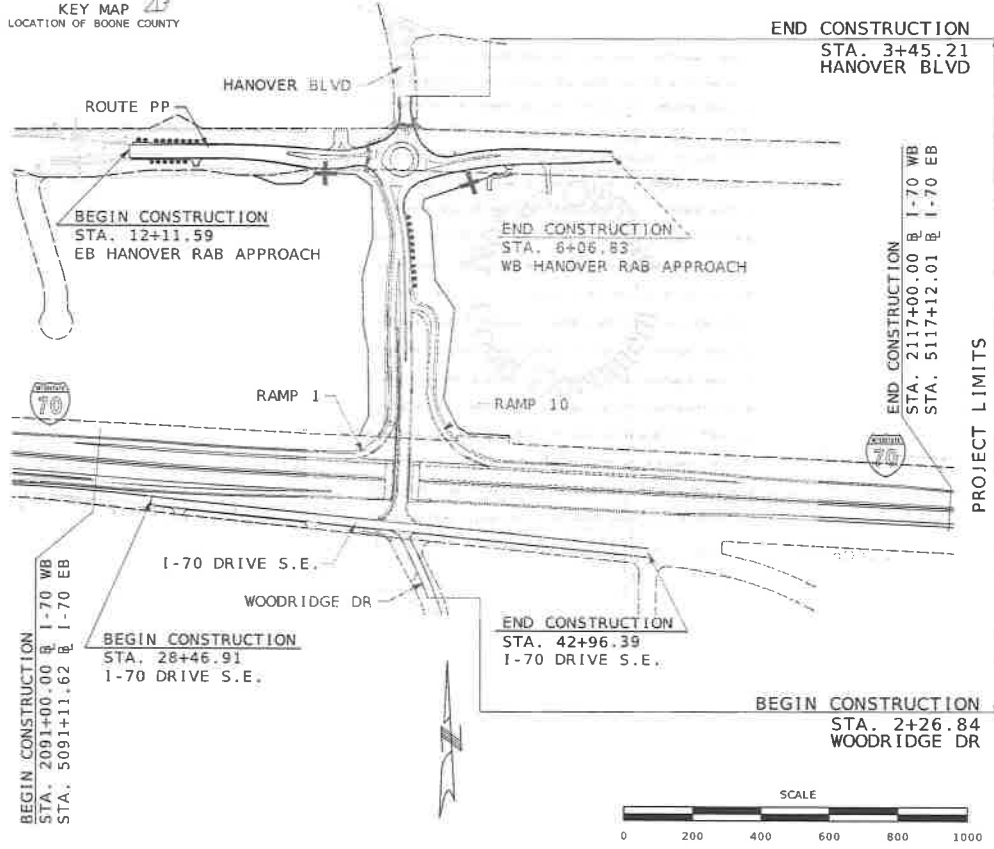
DESCRIPTION	SHEET NUMBER
TITLE SHEET	----- RW1101
TYPICAL SECTIONS (TS)	----- RW1TS01-RW1TS05
PLAN (PL)	----- RW1PL01-RW1PL04
PROFILE (PR)	----- RW1PR01-RW1PR10
DRAINAGE (DR)	----- RW1DR01-RW1DR04
RIGHT OF WAY (RW)	----- RW1RW01-RW1RW04
ALIGNMENT DETAILS (AD)	----- RW1AD01-RW1AD05
REMOVAL OF IMPROVEMENTS (RM)	----- RW1RM01-RW1RM04
PAVEMENT MARKINGS (PM)	----- RW1PM01-RW1PM05
CROSS SECTIONS (XS)	----- RW1XS01-RW1XS49

DATE PREPARED	15-NOV-2024
DATE	11-15-2024
PROJECT NO.	JST0021
CONTRACT NO.	X
PROJECT NO.	X
PROJECT NO.	X

**CONVENTIONAL SYMBOLS**

(USED IN PLANS)

	EXISTING	NEW
BUILDINGS AND STRUCTURES	---	---
GUARD RAIL	---	---
GUARD CABLE	---	---
CONCRETE RIGHT-OF-WAY MARKER	---	---
STEEL RIGHT-OF-WAY MARKER	---	---
LOCATION SURVEY MARKER	---	---
UTILITIES		
FIBER OPTICS	-FO-	-FNO-
OVERHEAD CABLE TV	-OTV-	-ONV-
UNDERGROUND CABLE TV	-UTV-	-UNV-
OVERHEAD TELEPHONE	-OTE-	-ONE-
UNDERGROUND TELEPHONE	-UTE-	-UNE-
OVERHEAD POWER	-OEP-	-ONP-
UNDERGROUND POWER	-UEP-	-UNP-
SANITARY SEWER	-SS-	-SNS-
STORM SEWER	-SS-	-SNS-
GAS	-G-	-GN-
WATER	-W-	-WN-
MANHOLE	---	---
FIRE HYDRANT	---	---
WATER VALVE	---	---
WATER METER	---	---
DROP INLET	---	---
DITCH BLOCK	---	---
GROUND MOUNTED SIGN	---	---
LIGHT POLE	---	---
H-FRAME POWER POLE	---	---
TELEPHONE PEDESTAL	---	---
FENCE	---	---
CHAIN LINK	---	---
WOVEN WIRE	---	---
GATE POST	---	---
BENCHMARK	---	---
EXISTING ROW	---	---
EXISTING ROW (CONTROLLED ACCESS)	---	---
NEW ROW	---	---
NEW ROW (CONTROLLED ACCESS)	---	---
CONTROL POINT	---	---



THE EXISTENCE AND APPROXIMATE LOCATION OF UTILITY FACILITIES KNOWN TO EXIST, AS SHOWN ON THE PLANS, ARE BASED ON THE BEST INFORMATION AVAILABLE TO THE COMMISSION AT THIS TIME. THIS INFORMATION IS PROVIDED BY THE COMMISSION "AS-IS" AND THE COMMISSION EXPRESSLY DISCLAIMS ANY REPRESENTATION OR WARRANTY AS TO THE COMPLETENESS, ACCURACY, OR SUITABILITY OF THE INFORMATION FOR ANY USE. RELIANCE UPON THIS INFORMATION IS DONE AT THE RISK AND PERIL OF THE USER, AND THE COMMISSION SHALL NOT BE LIABLE FOR ANY DAMAGES THAT MAY ARISE FROM ANY ERROR IN THE INFORMATION. IT IS, THEREFORE, THE RESPONSIBILITY OF THE CONTRACTOR TO VERIFY THE EXISTENCE, LOCATION AND STATUS OF ANY FACILITY. SUCH VERIFICATION INCLUDES DIRECT CONTACT WITH THE LISTED UTILITIES.

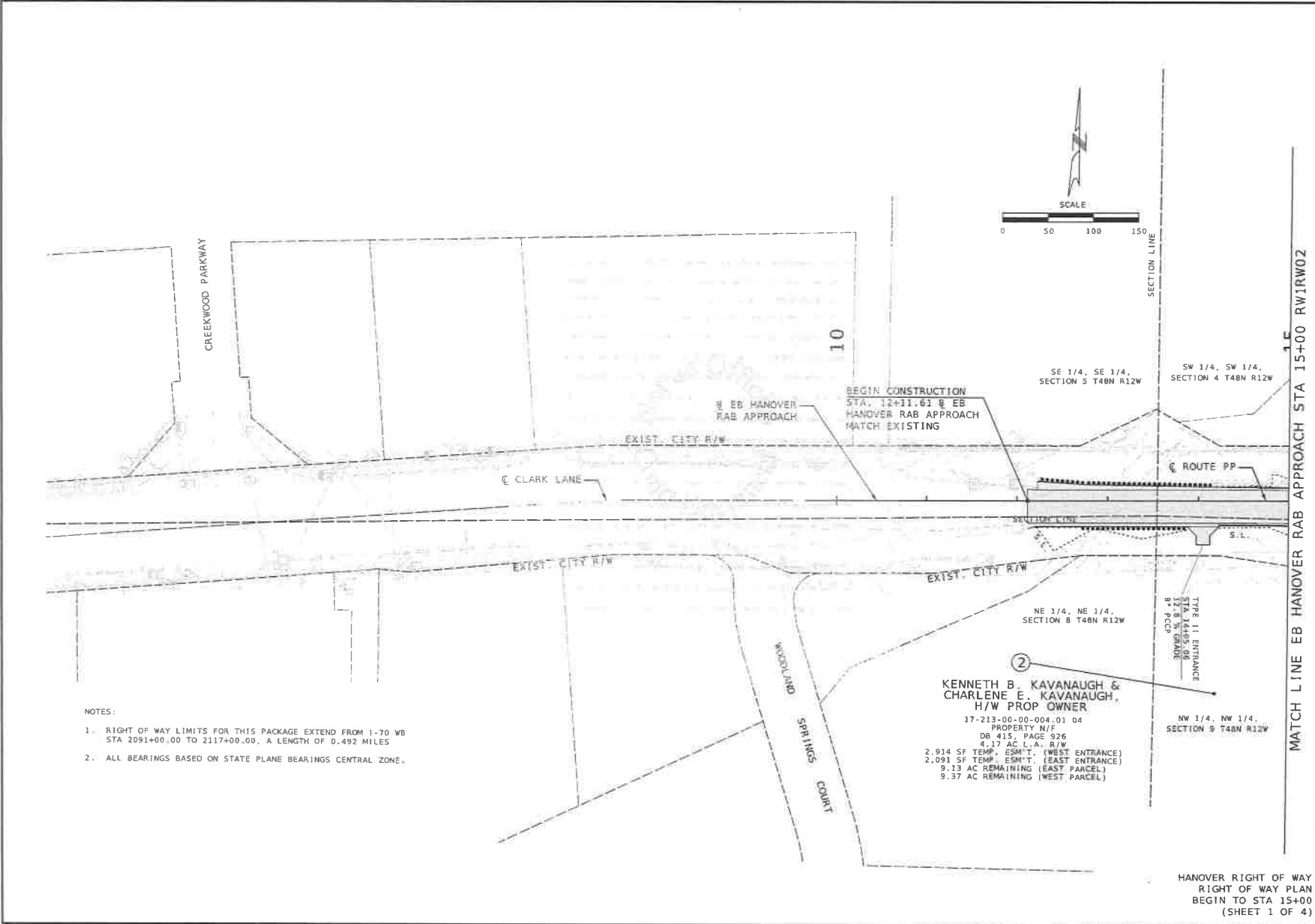
**LENGTH OF PROJECT**

BEGINNING OF PROJECT	STA. 2091+00.00
END OF PROJECT	STA. 2117+00.00
APPARENT LENGTH	APPRX. 2600.00 FEET
STATE LENGTH	0.492 MILES

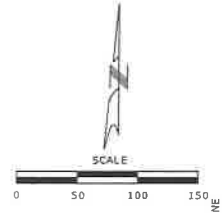
MISSOURI HIGHWAYS AND TRANSPORTATION COMMISSION



1-888-ASK-MODOT (1-888-275-6634)



- NOTES:
- 1. RIGHT OF WAY LIMITS FOR THIS PACKAGE EXTEND FROM 1-70 WB STA 2091+00.00 TO 2117+00.00, A LENGTH OF 0.492 MILES
  - 2. ALL BEARINGS BASED ON STATE PLANE BEARINGS CENTRAL ZONE.



DATE PREPARED		19-AUG-2024	
ROUTE	STATE	PROJECT NO.	SHEET NO.
I-70	MO	X	RWIRW01
DISTRICT	COUNTY	CONTRACT ID.	
CD	BOONE	X	
JOB NO.		PROJECT NO.	
JST0021		X	
CONTRACT ID.		BRIDGE NO.	
X		X	

DATE	DESCRIPTION

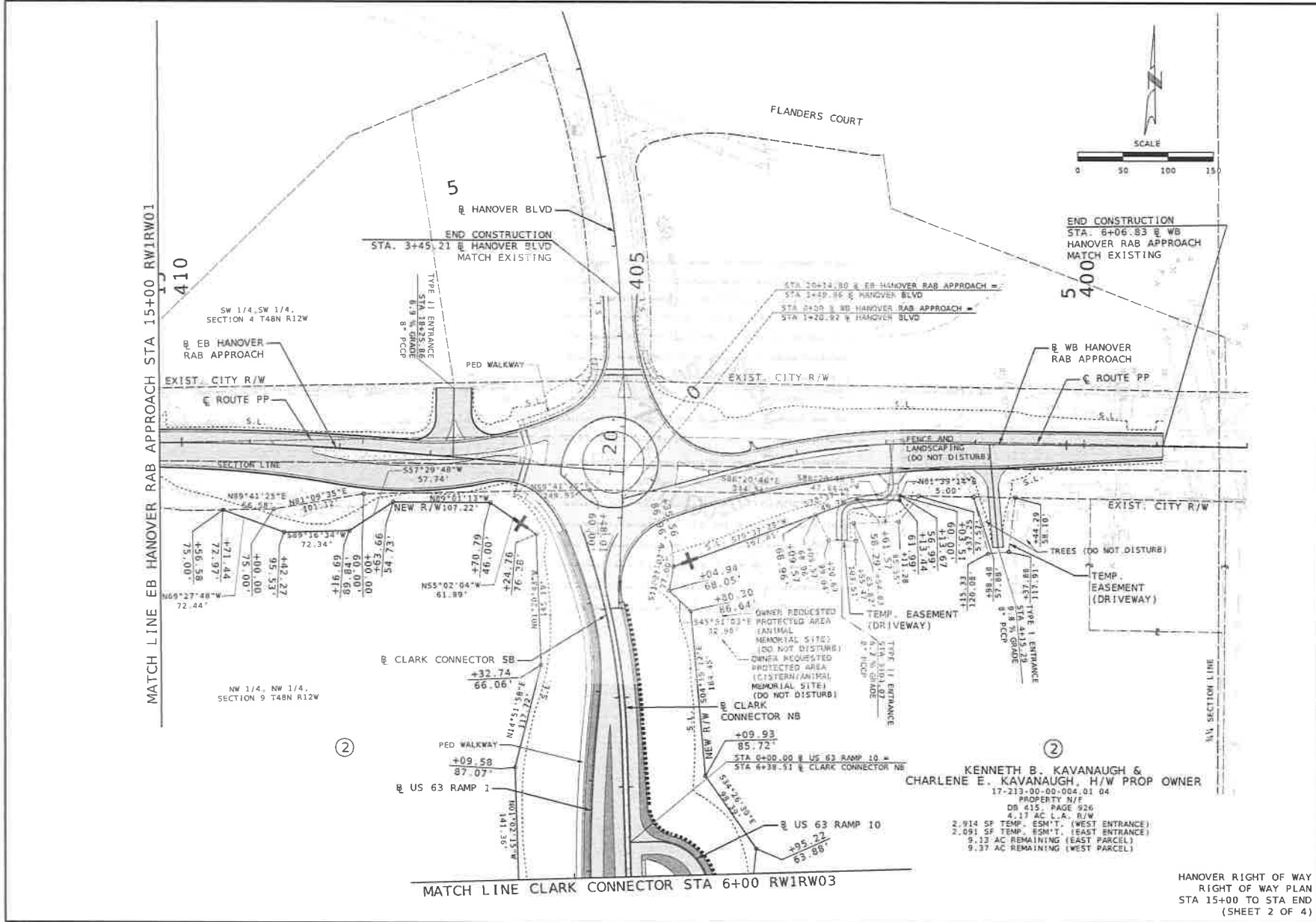
MISSOURI HIGHWAYS AND TRANSPORTATION COMMISSION




1-888-ASK-MISSOURI (1-888-276-6641)

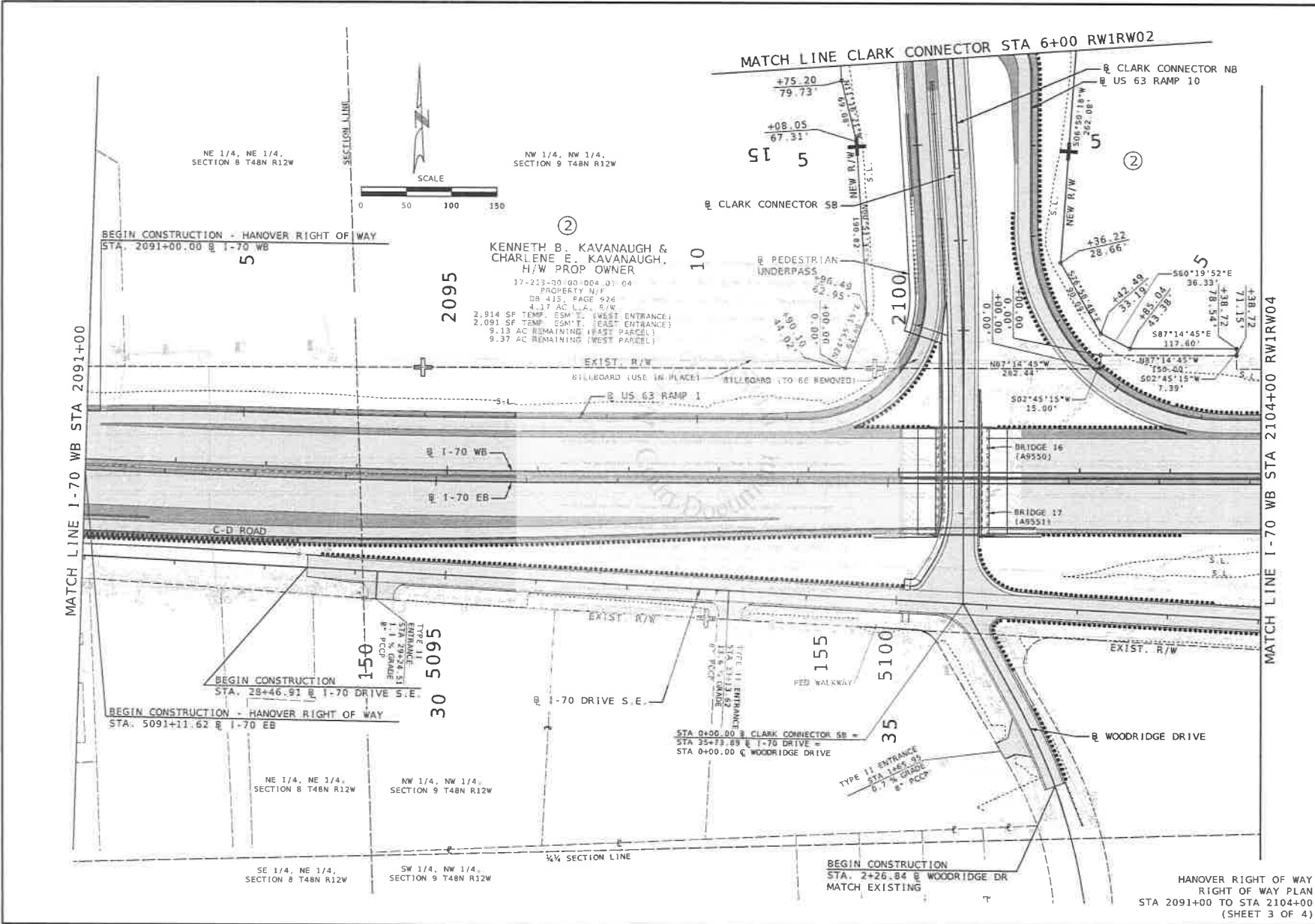
105 WEST CAPITOL  
JEFFERSON CITY, MO 64103

MISSOURI IMPROVE I-70 DN PROJECT 1

10301E CERTIFICATE OF AUTHORITY #23080-ENGINEERING



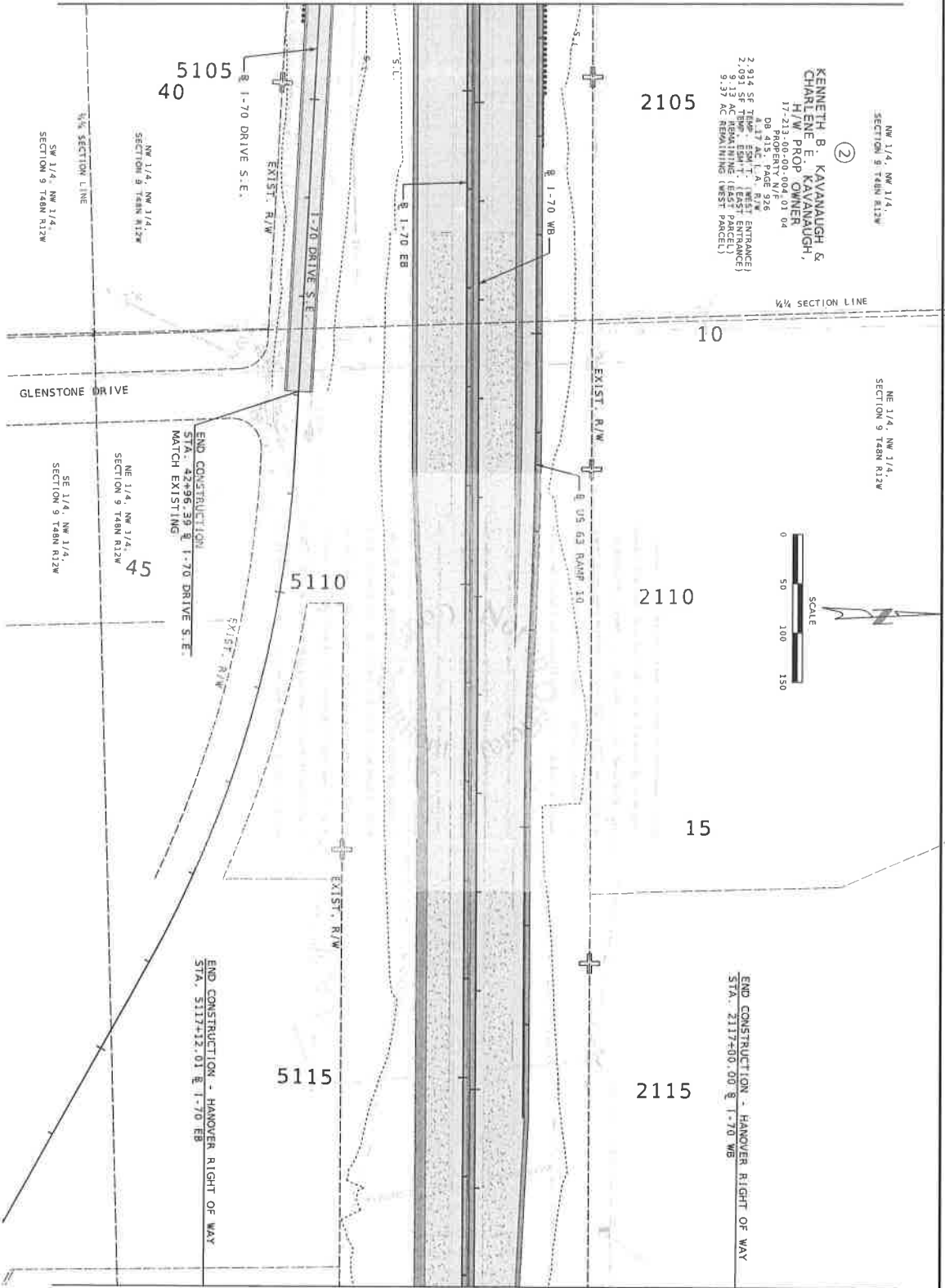
DATE PREPARED 19-AUG-2024	
ROUTE 1-70	STREET MO
STREET CD	SHEET NO. RW1RW02
COUNTY BOONE	
JOB NO. JST0021	
CONTRACT ID. X	
PROJECT NO. X	
BRIDGE NO. X	
DESCRIPTION	DATE
MISSOURI HIGHWAYS AND TRANSPORTATION COMMISSION	
 JOE WEST CAPITOL JEFFERSON CITY, MO 65102 1-888-ASK-MISSOURI (1-888-275-6616)	
 <b>JACOBS</b>	
 <b>MILLSTONE WEBER</b>	
MISSOURI DOT PROJECT 1 IMPROVE I-70 WB PROJECT 1 KENNETH B. KAVANAUGH & CHARLENE E. KAVANAUGH, H/W PROP OWNER 17-213-00-00-004.01 04. PROPERTY N/E DB 415 PAGE 626 4.17 AC C.L.A. R/W 2.914 SF TEMP. ESM'T. (WEST ENTRANCE) 2.091 SF TEMP. ESM'T. (EAST ENTRANCE) 9.33 AC REMAINING (EAST PARCEL) 9.37 AC REMAINING (WEST PARCEL)	
HANOVER RIGHT OF WAY RIGHT OF WAY PLAN STA 15+00 TO STA END (SHEET 2 OF 4)	



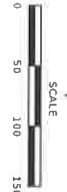
DATE PREPARED 19-AUG-2024	
SCALE 1-70	DATE MO
PROJECT NO. RWIRW03	
SHEET NO. BOONE	
CONTRACT NO. JST0021	
PROJECT NO. X	
SHEET NO. X	
DESCRIPTION	
DATE	
MISSOURI HIGHWAYS AND TRANSPORTATION COMMISSION	
105 WEST CAPITOL JEFFERSON CITY, MO 65102 1-888-ASK-MODOT (1-888-275-6636)	
MISSOURI STATE CERTIFICATE OF AUTHORITY: BRITTA ENGINEERING	

MISSOURI IMPROVE I-70 WB PROJECT I  
 HANOVER RIGHT OF WAY  
 RIGHT OF WAY PLAN  
 STA 2091+00 TO STA 2104+00  
 (SHEET 3 OF 4)

MATCH LINE 1-70 WB STA 2104+00 RW1RW03



2,914 SF TRAMP (EAST ENTRANCE)  
 2,091 SF TRAMP (EAST ENTRANCE)  
 9,37 AC REMAINING (WEST PARCEL)  
 DB 415, PAGE 926  
 17-21 PROPERTY N/E  
 H/W R/O D OWNER  
 KENNETH B. KAVANAUGH &  
 CHARLENE E. KAVANAUGH,



MATCH LINE 1-70 WB STA 2117+00

C:\pwworking\jacobson\mif-transport\101810351\X05\_MW\_D4\_1510021\_150.dgn 9/22/20 PH 11/19/2024

MoDOT IMPROVE I-70 DB PROJECT I <b>JACOBS</b> <b>MILLSTONE WEBER</b>		MISSOURI HIGHWAYS AND TRANSPORTATION COMMISSION 		DATE 19-AUG-2024	DESCRIPTION 1-70 WB CD JST0021 CONTRACT NO. JST0021 SHEET NO. RW1RW04 BOOK NO.
MO STATE CERTIFICATE OF AUTHORITY #00724 ENGINEERING		105 WEST CAPITOL JEFFERSON CITY, MO 65102 1-888-ASK-MODOT (1-888-275-6636)		PROJECT NO. X CONTRACT NO. X SHEET NO. X	DATE PLOTTED: 19-AUG-2024 TIME: 10:00 AM PLOTTER: MO PLOT SCALE: 1"=100' PLOT DEVICE: HP DesignJet 5000