

CERTIFIED COPY OF ORDER

STATE OF MISSOURI

} ea.

February Session of the January Adjourned

Term. 20 16

County of Boone

In the County Commission of said county, on the

2nd

day of

February

20

16

the following, among other proceedings, were had, viz:

Now on this day the County Commission of the County of Boone does hereby approve the request by the Information Technology Department for Administrative Authority to purchase Laptop Computers, Personal Computers, Peripherals and Printers from Cooperative Contracts for FY2016 as described in the attached Memorandum.

Done this 2nd day of February, 2016.

ATTEST:

Wendy S. Noren
Wendy S. Noren
Clerk of the County Commission

Daniel K. Atwill
Daniel K. Atwill
Presiding Commissioner

Karen M. Miller
Karen M. Miller
District I Commissioner

Janet M. Thompson
Janet M. Thompson
District II Commissioner



BOONE COUNTY

Department of Information Technology

ROGER B. WILSON BOONE COUNTY GOVERNMENT CENTER
801 E. Walnut, Room 221
Columbia, MO 65201-4890
573-886-4319

Aron Gish

Director

DATE: January 28, 2016

TO: Dan Atwill, Presiding Commissioner
Karen Miller, District I Commissioner
Janet Thompson, District II Commissioner

FROM: Aron Gish

SUBJECT: Administrative Authority to Purchase Laptop Computers, Personal Computers, Peripherals and Printers from Cooperative Contracts for FY2016

The purpose of this request is to seek administrative authority for the Information Technology Department to purchase personal computers, laptop computers, computer peripherals and printers from cooperative contracts for the fiscal year 2016. The department's authority expired 12/31/15. Cooperative contracts include the State's WWT (World Wide Technology, Inc.), NACo (National Association of Counties) and WSCA (Western States Contracting Alliance). This type of request has been made and approved for each of the past 14 years. In addition, I would also request administrative authority to use the "Unanticipated Emergency Hardware" funding (1170-92301) to replace existing assets which fail and are not cost effective to repair. This authority would only cover personal computers, laptop computers, computer peripherals and printers with a replacement cost below \$1,300. This would allow for less downtime for our users and reduce the number of "spare" items needed to be kept as backup equipment.

Following are excerpts from past commission minutes:

"Commissioner Miller stated ... that the department is requesting the ability of the department to purchase these products from State contract, in an as needed basis. This is efficient and is cost effective for the County. There are three cooperative contracts, two are national, and the other is state. The Purchasing Department is in agreement that this is the best way for the County to go.

Commissioner Elkin stated he spoke with Melinda Bobbitt about this and she told him that there could be up to two hundred bids, from across the nation, for these items.

Commissioner Miller stated it is hard to know if someone has the support to be able to fulfill the bid. Many times John Patton, County Counsel, has had to help the County get out of contracts because people were not able to meet the contract that was signed. This is the best solution as fast as technology moves.

Commissioner Miller moved to approve the request from the Information Technology Department for Administrative Authority to purchase laptop computers, personal computers, peripherals and printers from cooperative contracts for the fiscal year 2002.

Commissioner Elkin seconded the motion. There was no discussion or public comment. The motion passed 2-0."

A commission order was approved January 2015 to cover FY15. The same reasons still apply for the need to have this Administrative Authority granted for FY2016.

Thank you for your consideration.

CERTIFIED COPY OF ORDER

STATE OF MISSOURI

} ea.

February Session of the January Adjourned

Term. 20 16

County of Boone

2nd day of February 20 16

In the County Commission of said county, on the

the following, among other proceedings, were had, viz:

Now on this day the County Commission of the County of Boone does hereby acknowledge the following budget amendment from the Circuit Clerk to increase the Garnishment Fee Fund to cover unexpected expenditures.

Department	Account	Department Name	Account Name	Decrease \$	Increase \$
2860	86898	Garnishment Fee	Shortages & Overages		400
2860	86850	Garnishment Fee	Contingency Account		2,000

Done this 2nd day of February, 2016.

ATTEST:

Wendy S. Noren
 Wendy S. Noren
 Clerk of the County Commission

Daniel K. Atwill

Daniel K. Atwill
 Presiding Commissioner

Karen M. Miller

Karen M. Miller
 District I Commissioner

Janet M. Thompson

Janet M. Thompson
 District II Commissioner

2016

BOONE COUNTY, MISSOURI REQUEST FOR BUDGET AMENDMENT

01/01/2016
EFFECTIVE DATE

FOR AUDITORS USE

(Use whole \$ amounts)
Transfer From Transfer To
Decrease Increase

Dept	Account	Fund/Dept Name	Account Name	Transfer From Decrease	Transfer To Increase
2860	86898	Garnishment Fee	Shortages & Overages		400
2860	86850	Garnishment Fee	Contingency Account		2,000
				-	2,400

Describe the circumstances requiring this Budget Amendment. Please address any budgetary impact for the remainder of this year and subsequent years. (Use an attachment if necessary):

To cover unexpected expenditures.

Christy Blakemore
Requesting Official

TO BE COMPLETED BY AUDITOR'S OFFICE

- A schedule of previously processed Budget Revisions/Amendments is attached
- A fund-solvency schedule is attached.
- Comments: *Cover unexpected expenses*

Agenda

27

Auditor's Office
David St. Clair
PRESIDING COMMISSIONER

Jane McAlle Janner
DISTRICT I COMMISSIONER DISTRICT II COMMISSIONER

BUDGET AMENDMENT PROCEDURES

- County Clerk schedules the Budget Amendment for a first reading on the commission agenda. A copy of the Budget Amendment and all attachments must be made available for public inspection and review for a period of at least 10 days commencing with the first reading of the Budget Amendment.
- At the first reading, the Commission sets the Public Hearing date (at least 10 days hence) and instructs the County Clerk to provide at least 5 days public notice of the Public Hearing. NOTE: The 10-day period may not be waived.
- The Budget Amendment may not be approved prior to the Public Hearing.



Fw: garnishment
Christy Blakemore to: Deborah Lee

01/06/2016 10:16 AM

we need to talk on this.

Christy Blakemore
Boone County Circuit Clerk
Columbia, MO 65201
573.886.4041
573.886.4095 fax

----- Forwarded by Christy Blakemore/13/Courts/Judicial on 01/06/2016 10:16 AM -----

From: "June Pitchford" <JPitchford@boonecountymo.org>
To: "Christy Blakemore" <christy.blakemore@courts.mo.gov>
Cc: "Jason Gibson" <JGibson@boonecountymo.org>, <Sherry.Seiling@courts.mo.gov>
Date: 01/05/2016 03:47 PM
Subject: Re: garnishment

Christy,

You can submit a Pay Req from the Garnishment Fund, but since there aren't any appropriations in this fund for 2016, we'll need you to prepare a budget amendment as soon as possible. The statutory budget amendment process requires more time than a budget revision. Debbie will get an error message on the Pay Req, so she will need to include a note that a budget amendment will be prepared. Please attach a copy of this e-mail to the Pay Req.

Account coding for the Pay Req: #2860 Circuit Clerk Garnishment Fee Fund Activity (Dept code); #86898 Shortages & Overages- Net (account code). I have added this Dept/Account combination to the 2016 ledger.

In hindsight, I think it would have been advisable to budget an amount in 2860-86850 (Garnishment Fund, Contingency account) to cover unexpected things such as this; we should be sure to do that going forward.

For the Budget Amendment, I recommend including a lump sum amount in 2860-86850, the Contingency account. Then, as amounts are needed for various purposes throughout the year, we only need a budget revision from you to shuffle the money to the correct expenditure account. However, if you know of other specific things that will be needed, please include them on the Budget Amendment as well so that we can address them all with a single budget amendment.

Thanks,
June

>>> <Christy.Blakemore@courts.mo.gov> 1/5/2016 11:16 AM >>>

Sorry June I totally understand.

We sent debtor a letter giving her a time period to pay this back so that was part of the delay and then when that didn't happen is when we proceeded with our past procedure of sending paperwork to take from interest and then got a call from Meta and that is how we got here. Which I think is a good thing so we can look at this procedure because unfortunately mistakes are going to happen.

What do you think about us sendings over pay rec to take from the garnishment fund so we can get his money to him and then we continue to talk and come up with a procedure for here on out. It could be depending on the type of error we may have different procedures. Would that be okay?

Sent from my iPad

> On Jan 5, 2016, at 10:46 AM, June Pitchford

<JPitchford@boonecountymo.org> wrote:

>

> Christy-- I understand that it has been two months since the error occurred, but I've only known about this for two days... I was out of the office last week when Jason was contacted.

>

> The manner and method of solution will be dependent upon whether or not all of the monies will be collected from the garnishee: to the extent it will be recovered in full, we should account for it as a receivable rather than as an expenditure. To the extent it is not fully collected, it will be an expenditure and we will want to use the Circuit Clerk's Garnishment Fee fund to cover the loss. (However, because there was no budget established in this fund for 2016, a budget amendment would be needed.)

>

> As soon as you know for sure about re-instating the garnishment and can walk us through the accounting and tracking details on your end, Jason and I can meet with you.

>

> Thanks,

> June

>

> >>> <Christy.Blakemore@courts.mo.gov> 1/5/2016 9:31 AM >>>

>

> We can do that, however, can we go ahead and find a way to get this guy is

> money? We are actually at two months that he hasn't had this money.

>

> Thanks June.

>
> Sent from my iPad
>
>> On Jan 4, 2016, at 12:19 PM, June Pitchford
> <JPitchford@boonecountymo.org> wrote:
>>
>> Sherry:
>>
>> Is it possible for you to get a court order to re-instate the
garnishment
> of funds?
>>
>> In terms of developing our internal policy for such situations, it
makes
> sense that we would do everything reasonably possible to recover the
monies
> from the debtor-- which seems right and appropriate. Assuming so, we
may
> need to discuss the timing and accounting details.
>>
>>
>>
>> Christy-- hope you feel better soon!
>>
>> Thanks,
>> June
>>
>> >>> <Christy.Blakemore@courts.mo.gov> 1/4/2016 10:57 AM >>>
>>
>> The check was actually dated 11-3-15. This was brought to our
attention
>> because the plaintiff seen the payout on casenet. We sent letter to
> debtor
>> that it was an error sending her the check for her not to cash
>> it.....that letter was done on 11-4, then our intent was to stop
>> pay, which was where we had issues with bank.
>>
>> So as you can see it has been a good while, so I would say if at all
>> possible, the sooner the better we get this money to him.
>>
>> I am not feeling well so I am going to head home. If you have specific
>> questions on this Sherry may be able to help you.
>>
>> Thanks June.
>>

Fund Statement - Circuit Clerk Garnishment Fee Fund 286 (Nonmajor)

	2014 Actual	2015 Budget	2015 Estimated	2016 Budget
FINANCIAL SOURCES:				
Revenues				
Property Taxes	\$ -	-	-	-
Assessments	-	-	-	-
Sales Taxes	-	-	-	-
Franchise Taxes	-	-	-	-
Licenses and Permits	-	-	-	-
Intergovernmental	-	-	-	-
Charges for Services	-	21,000	25,500	29,500
Fines and Forfeitures	-	-	-	-
Interest	-	-	-	-
Hospital Lease	-	-	-	-
Other	-	-	-	-
Total Revenues	-	21,000	25,500	29,500
Other Financing Sources				
Transfer In from other funds	-	-	-	-
Proceeds of Long-Term Debt	-	-	-	-
Other (Sale of Capital Assets, Insurance Proceeds, etc)	-	-	-	-
Total Other Financing Sources	-	-	-	-
Fund Balance Used for Operations	-	-	-	-
TOTAL FINANCIAL SOURCES	\$ -	21,000	25,500	29,500
 FINANCIAL USES:				
Expenditures				
Personal Services	\$ -	-	-	-
Materials & Supplies	-	-	-	-
Dues Travel & Training	-	-	-	-
Utilities	-	-	-	-
Vehicle Expense	-	-	-	-
Equip & Bldg Maintenance	-	-	-	-
Contractual Services	-	-	-	-
Debt Service (Principal and Interest)	-	-	-	-
Emergency	-	-	-	-
Other	-	-	-	2,400
Fixed Asset Additions	-	-	-	-
Total Expenditures	-	-	-	2,400
Other Financing Uses				
Transfer Out to other funds	-	-	-	-
Early Retirement of Long-Term Debt	-	-	-	-
Total Other Financing Uses	-	-	-	-
TOTAL FINANCIAL USES	\$ -	-	-	2,400
 FUND BALANCE:				
FUND BALANCE (GAAP), beginning of year	\$ -	-	-	25,500
Less encumbrances, beginning of year	-	-	-	-
Add encumbrances, end of year	-	-	-	-
Fund Balance Increase (Decrease) resulting from operations	-	21,000	25,500	27,100
FUND BALANCE (GAAP), end of year	-	21,000	25,500	52,600
Less: FUND BALANCE UNAVAILABLE FOR APPROPRIATION, end of year				
	-	-	-	-
NET FUND BALANCE, end of year	\$ -	21,000	25,500	52,600

CERTIFIED COPY OF ORDER

STATE OF MISSOURI

February Session of the January Adjourned

Term. 20 16

County of Boone

} ea.

In the County Commission of said county, on the

2nd

day of

February

20

16

the following, among other proceedings, were had, viz:

Now on this day the County Commission of the County of Boone does hereby accept the recommendation of Mission Critical Partners regarding the procurement of the Computer-Aided Dispatch product known as SunGard Public Sector's OneSolution CAD system, a copy of which is attached hereto. The County Commission thanks the agencies and county departments that participated in the evaluation process through their representatives, including the Boone County Sheriff's Department, Boone County Fire Protection District, Columbia Fire Department, Columbia Police Department, Boone County Emergency Management, University of Missouri Ambulance Service, and Boone County Joint Communications. The County's Purchasing Department is hereby directed to work with Boone County Joint Communications, Boone County IT, and Mission Critical Partners on the final evaluation of the SunGard CAD product to ensure it can meet the needs identified by MCP and those departments, and proceed with an appropriate procurement of the CAD product to be approved by later action of the County Commission.

Done this 2nd day of February, 2016.

ATTEST:

Wendy S. Noren
 Wendy S. Noren
 Clerk of the County Commission

Daniel K. Atwill
 Daniel K. Atwill

Presiding Commissioner

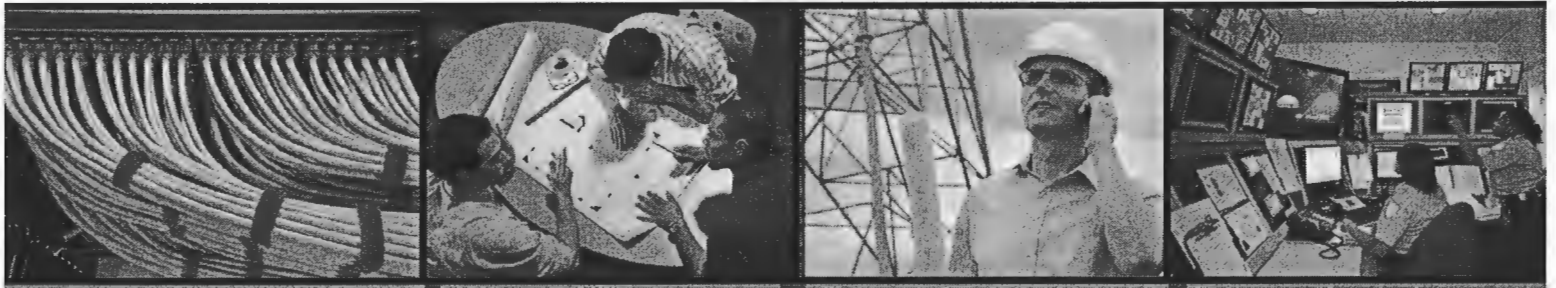
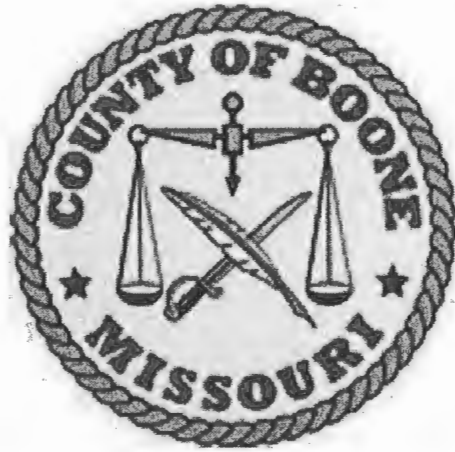
Karen M. Miller
 Karen M. Miller

District I Commissioner

Janet M. Thompson

Janet M. Thompson

District II Commissioner



COMPUTER-AIDED DISPATCH RECOMMENDATION REPORT

SUBMITTED JANUARY 2015 TO:
JOINT COMMUNICATIONS CENTER
BOONE COUNTY, MISSOURI



MissionCriticalPartners

690 Gray's Woods Boulevard | Port Matilda, PA 16870 | 888.8.MCP911 or 888.862.7911 | www.MCP911.com



TABLE OF CONTENTS

1. INTRODUCTION	1
2. EXECUTIVE SUMMARY	1
3. DISCUSSION	4
3.1. VENDOR RESPONSES	4
3.2. VENDOR ANALYSIS/COMPARISON	5
4. CONCLUSION.....	6
APPENDIX 1 – SUPPORTING DOCUMENTATION.....	8
APPENDIX 2 – VENDOR QUESTIONNAIRES.....	15
APPENDIX 3 – MASTER CAD OFF-SITE SCORECARD.....	20
APPENDIX 4 – SWOT ANALYSIS.....	25



1. INTRODUCTION

Boone County, Missouri, seeks to acquire a fully integrated computer-aided dispatch (CAD) system including automatic vehicle location (AVL), geographic information system (GIS) mapping, a mobile client, and a two-way interface with the firehouse reporting, law enforcement mobile reporting, and other subsystems described throughout this document. The new CAD system is intended to support the operations of the Boone County Joint Communications Center, Boone County fire departments, the Boone County Sheriff's Department, the City of Columbia police and fire departments, and other municipalities and agencies within Boone County.

In this document, all component systems and subsystems are referred to collectively as "the system." The system, once implemented, will provide dispatch services to multiple law enforcement, fire and emergency medical service (EMS) agencies, with the ultimate goals of assisting in resource management and the creation and maintenance of records, and providing a method to exchange data between user agencies.

CAD systems typically consist of a software suite used to field and manage public safety requests for service; including the dispatching of first responders and apparatus, and the managing of such resources. CAD systems generally are used by emergency communications dispatchers, call-takers and supervisors in independent and consolidated public safety answering points (PSAPs), as well as by field personnel utilizing mobile data terminals (MDTs) or mobile data computers (MDCs).

CAD system capabilities typically include incident input, call dispatching, call status maintenance, event notes, field unit status and tracking, and call resolution and disposition.

On April 2, 2013, the citizens of Boone County voted to approve a three-eighths-cent countywide sales tax to pay for a new joint communications and dispatch center, as well as emergency management services.

2. EXECUTIVE SUMMARY

Boone County desires to procure a fully integrated CAD system that will meet the current and future needs of first response agencies and the citizens and visitors to the County. MCP was asked to limit its research to Infor EnRoute, the current CAD system vendor, and SunGard Public Sector, due to existing relationships with both vendors.

As a note, the term "fully integrated system" is defined as an integrated software solution that is tightly interconnected with several application programs that share a common database and user interface. In an integrated software solution, the output of one program can be readily imported into, or embedded in, another program; this cannot be accomplished with a system that utilizes multiple interfaces.



For this project a “fully integrated system” means that the products and components associated with the CAD system are part of a single solution. This happens when two or more products work closely together to combine different functionalities into one product, with the data maintained in a single location. SunGard’s ONESolution product is an example of a fully integrated system capable of accommodating the full suite of programs into a single solution.

The difference between interfaced and integrated systems is that, in the former, an interface—commonly known as a “bridge”—enables two or more separate software products to communicate under limited capacity. Data is maintained in multiple locations in such systems, thus requiring more administration. The Infor EnRoute CAD solution utilizes multiple interfaces to interact with associated components, and as such is not a fully integrated system.

A vital point of consideration in this recommendation is the County’s requirement for the selected vendor to provide system and subsystem maintenance from a single point of contact.

Boone County engaged Mission Critical Partners, Inc. (MCP) to assist in the recommendation and procurement of the system and subsystems identified in this document.

Specifically, MCP was asked by Boone County to coordinate a system proposal from the current CAD vendor, Infor EnRoute, to ascertain the impact of upgrading the current end-of-life CAD system, and to clarify whether Infor EnRoute could provide a fully integrated CAD system and associated components. Those stipulated components include, in addition to the CAD system, mobile data, mobile field reporting, and automatic vehicle location. The new system also must be able to integrate with the SunGard records management system (RMS) that recently was purchased by the City of Columbia.

During the research-and-evaluation process, MCP and Boone County staff had multiple discussions via email and telephone, and attended product demonstrations with Infor EnRoute management. Infor EnRoute was asked on at least four occasions whether its system was fully integrated, and specifically whether its system would integrate with the SunGard RMS. Infor EnRoute failed to respond to the question until the final conference call on January 4, 2016, when Margaret Moran stated that the company’s solution could interface with the SunGard RMS, but that it had no current active interfaces with the SunGard RMS and the new SQL CAD product. It also was discovered that Infor EnRoute utilizes several third-party components and relies on multiple interfaces to transfer data between those systems and the Infor EnRoute CAD system.

It had been noted in the technology assessment previously performed as part of this project that several first response agencies were displeased with the Interact mobile client, which is a third party component of the Infor EnRoute CAD system. Additionally, the County expressed its displeasure with the number of interfaces required to operate the current CAD system and continual costs associated with creating and maintaining many of the required interfaces.



In order to gain a comparative model and allow an objective approach to the decision-making process, Boone County requested MCP to research the SunGard One Solution CAD system and schedule a CAD and subsystem demonstration with SunGard Public Sector. The impetus for this option is that the Boone County Sheriff's Department currently utilizes the HTE Naviline Select RMS and Jail Management System (JMS) programs, and the City of Columbia was contemplating the purchase of the SunGard RMS system. It was felt that SunGard would be a reasonable comparative model due to the current and projected utilization of the SunGard RMS.

Based upon extensive research by MCP, the Boone County staff, Boone County Fire Protection District fire chief, and the City of Columbia police and fire department personnel—which included multiple product demonstrations, site visits, and emails to clarify questions and to request specific clarifications relating to each vendor's products—the following recommendations are offered:

- A. MCP recommends that the County select SunGard Public Sector's ONESolution CAD system, in order to procure a fully integrated CAD system and associated components.
- B. MCP further recommends that the County immediately enter into negotiations with SunGard Public Sector to establish a pricing schedule and appropriate terms and conditions that will be in the best interest of the citizens of Boone County.
- C. MCP further recommends that in the event negotiations with SunGard Public Sector are not within the scope of consideration and do not meet the approval of the Boone County Commission, a new procurement process for a fully integrated CAD system should be initiated.

It should be noted that virtually all agency leaders involved in the research, demonstrations and site visits recommended SunGard Public Sector and ONESolution product as their vendor and solution of choice. The leaders cited stipulations regarding operational functionality that should be included in the negotiation process. The comments and written recommendations from the agency leaders are contained in Appendix 1.

MCP shows no allegiance to any vendor and pledges our vendor-agonistic policy to provide the most objective analysis possible in our projects.

It is stipulated herein that Boone County is not bound in any manner by this recommendation and reserves the right to select any vendor that in its opinion provides the best value and lowest risk, or to reject any vendor that in its opinion would require the County to assume unnecessary risk, regardless of price.



3. DISCUSSION

3.1. VENDOR RESPONSES

MCP requested that Infor EnRoute and SunGard Public Sector provide proposals that include a firm fixed price, including a breakout of each module and interface for a fully functional integrated, turnkey system. Those preliminary prices were provided by both vendors. However, for the purpose of this recommendation, MCP stipulates that negotiations occur between SunGard Public Sector and the County after presentation and acceptance of this document, to assure that the most cost-effective products and terms of agreement are presented.

3.1.1. MCP requested that each vendor identify locations of comparable size and complexity where their systems have or are successfully performed on schedule and within budget, and in the same design/format requested by Boone County.

Response:

Both vendors met this requirement and subsequent site visits were conducted.

3.1.2. MCP requested that each vendor provide the names of any subsystem vendors anticipated to provide components or modules in the proposed Boone County system, and their relationship to that specific vendor.

Response:

SunGard Public Sector included the requested information in its description of the its ONESolution product suite.

Infor EnRoute did not provide all component vendor names, nor their relationship to those vendors.

3.1.3. MCP requested that each vendor provide all system or subsystem interfaces that will be required to implement and maintain the proposed Boone County CAD system.

Response:

SunGard Public Sector stated that its system is integrated, although the company does have interfaces available for Firehouse Reporting and other non-SunGard products, if needed.

Infor EnRoute did not provide all interfaces required by this question.

3.1.4. MCP requested that each vendor provide a current customer list to allow Boone County representatives to visit or communicate with them during the evaluation process.

Response: Both vendors provided the requested information.



3.1.5. MCP requested that each vendor provide documentation of its commitment to long-term support of the software, and exhibit its history of providing a high level of customer support and software version updates as part of their maintenance contract. In addition, each vendor was requested to identify its method of providing 24 x 7 customer support, including specifying its method of logging, reporting and resolving software trouble issues.

Response:

Both vendors pledged this commitment but neither provided written documentation.

3.1.6. MCP requested that each vendor exhibit its ability to provide a single integrated suite of products as the primary focus of the system procurement and implementation process.

Response:

SunGard Public Sector exhibited and proposed a single, fully integrated suite of products.

Infor EnRoute did not present or propose a fully integrated suite of products.

3.1.7. It should be noted that the opportunity was presented for vendors to propose solutions that involved a partnership of vendors with a tightly integrated and seamless solution that has been effectively implemented in agencies of similar size and complexity as Boone County. In this model, a single vendor must be responsible for the success of such a proposed solution—including definition, delivery, integration and testing—to meet Boone County's requirements, implementation and complete system maintenance. It was stated that the County's goal is to implement a system that would identify a single point of contact for all maintenance issues.

Response:

SunGard Public Sector identified its ONESolution CAD solution and identified locations of similar size to Boone County where the system currently is operating. In addition, SunGard stated that its help desk would be its point of contact for maintenance issues.

Infor EnRoute did not provide any locations the size of Boone County that utilize a fully integrated system produced by the company. However, Infor EnRoute stated that its help desk would provide maintenance contact and support for its products.

3.2. VENDOR ANALYSIS/COMPARISON

MCP, in association with Boone County, developed a questionnaire as a tool to perform a comparative analysis of components and functionality of each vendor's CAD/RMS and associated components. The questions were promulgated by user groups and Boone County staff. Each provider was requested to complete the questionnaire and return by close of business on June 22, 2015. Both vendors were required to answer each question with either of the following two methods: 1) Comply, 2) Do not comply.



The results of the comparative analysis formed the basis for evaluating each vendor's compliance with the needs of Boone County, which can be found in Appendix 2. Master CAD Off-Site Visit Scorecard can be found in Appendix 3.

A Strengths, Weaknesses, Opportunities and Threats (SWOT) analysis was performed for both vendors, with the information outlined in Appendix 4.

4. CONCLUSION

MCP worked closely with representatives from the Boone County information technologies (IT) staff, Boone County Sheriff's Department and Joint Communications Center, and EMS agencies—as well as the Boone County Fire Protection District fire chief, County emergency management director, and City of Columbia fire chief and RMS project manager—to form a cohesive group that would perform research on both vendors.

It was MCP's intention to work with user agencies to find the most-appropriate CAD system and associated components for the short- and long-term benefit of the citizens of Boone County. It should be noted that in any change of systems there will be positive and negative feelings. During the initiation phase through the first several months of operation, there will be an impact on dispatch center operations and personnel. This is normal. The goal of the group and MCP has been to look at the long-term challenges facing Boone County and forge a decision that prepares the emergency response system for the next 5-10 years.

This research and supporting documentation clearly indicates that the SunGard ONESolution is the best long-term CAD system for Boone County. The group created four questionnaires that sought clarification from each vendor related to specific questions regarding the CAD system and various associated components, including mobile data, GIS mapping, mobile field reporting, fire station alerting, interfacing with the Firehouse fire-reporting program, the ProQA emergency dispatch software, and other items that currently are utilized in the County.

As can be noted in Appendix 1, the overall consensus supports moving to the SunGard solution, although there is a concern regarding how fields currently appear on the telecommunicator's screen that ultimately will need to be addressed. The most difficult aspect of recommending changing from any legacy system to new technology is consideration of the impact on dispatch and field personnel, and their need to adjust and learn new or alternate methods to perform their duties.

With this in mind, the task provided to MCP was to recommend a solution that meets the long-term needs of Boone County and the response agencies within the County.



Therefore, MCP recommends that the Boone County Commission move forward with negotiations and potential procurement of the fully integrated SunGard Public Sector, ONESolution CAD system and associated components.



Appendix 1 – Supporting Documentation

CONTRIBUTORS

- A. Chad Martin – Law Enforcement Perspective
- B. Chad Martin – Dispatch Center Perspective
- C. Scot Olson – Boone County Fire Chief
- D. Terry Cassil – Boone County Emergency Management Director
- E. Randy White – City of Columbia Fire Chief
- F. Dan Beckman – City of Columbia RMS Project Manager – EnRoute Perspective
- G. Dan Beckman – City of Columbia RMS Project Manager – SunGard Perspective
- H. Jake Waller – University of Missouri Ambulance Service

A. Chad Martin, Director, Joint Communications Center

Law Enforcement Perspective

January 4, 2016

Dear Frank,

Prior to moving to my current position I was chosen as the law enforcement representative for the CAD site visits. As you know, on December 8th, 2015 I had the opportunity to travel with a group of fellow emergency services personnel to Spring Texas (Cypress Creek EMS – CCEMS) for a site visit of EnRoute CAD. Following that visit I had the opportunity to travel to Greensboro North Carolina for a visit to both the SunGard HQ and Guilford Metro's 9-1-1 Center. Following is a summary of the trip from my previous law enforcement perspective.

I believe law enforcement is the least burdensome on the system itself, yet produces the largest overall work load. While Fire/EMS and Law Enforcement all have public safety as the end goal, law enforcement goes about daily business in a much different fashion as it relates to CAD and mobile. Fire/EMS have a heavier front end as it relates to programming, while law enforcement utilizes different facets of CAD/mobile on the back end. It is with that in mind that I believe, of the two in question, SunGard's One Solution product offers the best "package" as it relates to both field usability and dispatcher awareness of units in the field as we all enter into the new territory of closest unit dispatching and integrated AVL (assuming SunGard fixes how the screen displays for the dispatchers – as it stands today I have serious officer safety concerns).

The EnRoute CAD and MobileCop independent combo has proven itself well for us for a number of years. The 9-1-1 tax was presented to the tax payers as an opportunity to provide an even better level of service to the citizens through adding both personnel and technology. I believe the single vendor solution presented to us by SunGard gives the user agencies a better ability to share information in the



field. Although CCEMS was primarily Fire/EMS dispatching, it was quite eye opening to see they turned to a volunteer firefighter to produce a better mobile product than EnRoute is providing.

This decision is a tough one to make for me as I have worn many hats over the years. Removing myself from my current position I have to reflect back on my days as a dispatcher and deputy on the street. As a dispatcher I was in an environment to provide information to units in the field. As a deputy I relied heavily on the information from dispatch, and then in the latter years from the mobile data terminal in the car. It wasn't until our CAD/RMS/JMS research started around 6 years ago that the expanded capacities of newer systems came to light for me. EnRoute's CAD certainly serves the dispatch world well as it has proven itself for over 20 years in Boone County. However, I believe Boone County is in need of a vendor that can provide a CAD and mobile solution that fully integrates within itself. EnRoute's mobile capability disappoints me from many angles. It has served Fire/EMS ok in recent years, but I do not believe the direction Infor is taking with that product lends itself to a good investment with our dedicated tax dollars.

In closing, from the law enforcement standpoint, I would support SunGard's One Solution CAD and mobile for the upgrade if it lends itself to being the overall best product once other aspects are factored in and SunGard commits to fixing the issues posed by the dispatchers.

Thank you,
Chad

B. Chad Martin
Dispatch Perspective

January 2, 2016

On December 8th, 2015 I had the opportunity to travel with a group of fellow emergency services personnel to Spring Texas (Cypress Creek EMS – CCEMS) for a site visit of EnRoute CAD. Following that visit I had the opportunity to travel to Greensboro, North Carolina for a visit to both the SunGard HQ and Guilford Metro's 9-1-1 Center. While my official capacity on the trip was as a law enforcement representative, with my new role I feel it is necessary to document my observations from the dispatch perspective as well as it relates to choosing SunGard's One Solution product over an upgrade to our current EnRoute CAD.

The top of the list for our dispatch center would have to be the service we provide to our customers. It should be noted that we have made every attempt to document the critical issues (list provided to I.T. that we used on the site visits) that SunGard would have to overcome compared to the way our system handles it today. However, it is not an all-inclusive list due to the number of years we have had EnRoute and been "tweaking" it to suit user agency needs. In this category I believe EnRoute CAD would easily continue to provide the users with the dispatch quality they have been receiving. We



certainly do not want to take any steps backward or impose drastic change in the way we do business because something was missed in the acquisition process. Simply put, the user agencies would need to be aware up front that if something was missed they will need to be open to change to conform to the confines of the SunGard product.

Second on a list of CAD changing concerns is training and dispatcher competency. This is by no means a deal killer, but it will take time to become proficient. As it stands today each person is given months of on-the-job training before being “cut loose”. If SunGard is chosen we would need to make sure all of the user agencies understand the dispatcher speed they are accustomed to today will take time to build back up. A frequent and periodic reminder for those with mobile data terminals to use them as much as possible should make the transition much smoother for all involved.

Additional concerns or notable remarks include:

1. AVL recommendation distance – If SunGard is chosen, we request the user agencies keep it small enough that it does not produce the 8 second delay that Guilford Metro has.”
2. The “command line” method of SunGard is not as user friendly and seems to be a little “older” way of doing business compared to what the younger generation of employees are accustomed to with modern user interfaces.
3. Guilford Metro employees estimated it took 6 months for most employees to be comfortable on the system, and they came from an older OSSI product (This obviously depends on the person and the approach to training, but it can’t be overlooked).
4. During discussions with SunGard a list of “action items” has been created. Some very important ones are safety concerns to responders and I believe everyone agreed they would need to be proven as fixed prior to final implementation. The biggest example is the active call screen listed by unit versus incident. During our visit inside the 9-1-1 Center at Guilford Metro we heard numerous dispatchers complain about how dangerous it is for units to be on a page you can’t see. Guilford Metro added personnel to monitor units on calls for this reason (something we obviously can’t do).

If SunGard is the chosen product we would want to take a deep look at the training. Given all the history behind how we got to where we are today, I don’t want a product “thrown” at the BCJC Telecommunicators. I would expect BCJC admin to be in close communication with the ECC Technology Team to provide very thorough training with as much input and assistance from SunGard as is necessary.

In closing, I believe each of the CAD solutions offer pro/cons as we explore their respective upgrades. Since we are a service agency I believe the SunGard One Solution product offers the user agencies a more comprehensive “one stop shop” with more opportunities to expand from current operating



practices. However, as I've stated above, user agency confidence in the product we choose would be, in my opinion, an additional strong factor to consider as it is their policies and practices that drive a lot of what we do in our daily business. Finally, I firmly stand behind my opinion that SunGard's CAD should only be procured as long as they can prove to us they have fixed the safety concerns that exist in their current product as it relates to unit status and waiting call awareness (the other items can be looked at separately).

C. Scott Olson, Fire Chief, Boone County Fire Department

Here is my scorecard from the CAD vendor demo's. From a CAD perspective, EnRoute edges out SunGard. But, SunGard looks like it has a better mobile product from the Fire District's perspective. If it works for the dispatch folks, I'd say we can support the switch to SunGard.

D. Terry Cassil, Emergency Management Director, Boone County

During our CAD visit in December 2015 a number of questions were posed to the vendors. In my opinion **IF** SunGard can answer those questions for our dispatch personnel and the end user organizations they would be the best vendor for our project. One factor that I don't know is price of product which I feel has to be a consideration. I want thank you for the opportunity to be involved. I know that countless hours have been invested in this process. I feel that this time is a good investment to get the best product for our users and our customers.

E. Randy White, Fire Chief, City of Columbia

Here are my personal thoughts and comments about the site visits and the two vendors.

EnRoute and Cypress Creek EMS

Upgrading EnRoute to the latest version is about what I expected as far as features and "fit" with what we are currently doing. After seeing it in action at Cypress Creek, here's what I came away with in positives and challenges:

Positives

Ease of transition and knowing that we continue with the same level and style of service in which we are accustomed. Very little change in operations would be necessary in order to conform to the new system. We can feel comfortable that it will do at LEAST what our system is capable of doing now.

Training and familiarization for the Telecommunicators and BCJC staff would require less time and effort as they are already comfortable with the look and feel of the overall product and would only have to embrace the minor changes of the upgraded system.



Challenges

I was disappointed to learn that Cypress Creek was not impressed (or even sticking with) the EnRoute Mobile product. So much so that they were using (or moving toward) a newly developed third-party solution. I was impressed with the third-party solution, but even that was not fully developed to the point that I would feel comfortable at this time implementing it. If that solution failed to perform or get to the market, what option would we have but to stay with what appears to be a less than effective EnRoute Mobile product?

The long delay (seconds in length) while it calculates apparatus response recommendations was annoying, but it is not clear whether that was a software issue or not.

SunGard and Guilford Metro

Positives

I think overall, the SunGard system shows more potential upside than EnRoute.

Bi-directional interface with the Firehouse RMS (for Fire Departments) and the more robust integration with CPD's SunGard RMS I think are important factors. I think the Firehouse functionality was undersold and not fully explained in our previous meetings with SunGard.

The ability to go "en route" and "on scene" automatically in order to improve timestamps and save on radio traffic was intriguing and I could see it being very beneficial for fire and EMS.

The mobile product for MDT's seemed fully operational and in talking with a Fire crew that used it on a daily basis, they felt it was fully functional and they had no issues with it. Additionally, Guilford was testing a SunGard mobile product (Freedom) that appeared even more promising for use by Fire and EMS.

Challenges

Steeper learning curve for Telecommunicators. Learning and getting comfortable with a new system will be more challenging and therefore take more time.

There seemed to be disconnect at Guilford between how management viewed the product and how the telecommunicators felt about the product. Management appeared very pleased with the system and the ease at which it was administered, while the rank-and-file users of the system complained about the system "crashing all the time" and with requested changes not being satisfied. It was hard to tell where the truth lies and/or whether this was because they were an early-adopter and found the "bugs". This would warrant further investigation.

There were several issues of concern about placement and viewing options for the Telecommunicators. If they are not able to be changed or modified, this would involve a substantial (and unwelcomed)



change in the way they dispatch. I believe that SunGard can make those changes, but it is something that I believe should be fully addressed prior to consideration or purchase.

Summary

Being honest, I went into this evaluation fully expecting EnRoute to be my recommendation. It appears a large portion of that belief was caused by the completely ineffective presentations given by the individuals sent out by SunGard for the first two presentations. After the SunGard Headquarters staff was able to cover our areas of concern, I feel more comfortable that they are a viable option. While there are issues that need to be addressed, I believe the two are more evenly matched with the edge given to SunGard (for the interfaces and additional features), but that edge is predicated on the ability of SunGard to not only answer those concerns, but agree to implement those changes at the onset of the project.

F. Dan Beckman

RMS Project Manager
Columbia Police Department
Site Visit to Cypress Creek – EnRoute

The EnRoute CAD upgrade provides a decent CAD product but would create other problems as a result of its acquisition. Cypress Creek did not recommend EnRoute's mobile product and, in fact, highly recommended a third party product as EnRoute's system was inferior and did not meet the needs of the agency. EnRoute's other products are also inferior to other vendors as was determined in the review of the RMS proposal they submitted in search conducted by CPD.

The problem this creates is having to piece meal a system together requiring extensive and costly interfacing. These "Frankenstein" systems cause additional complications like interfacing and information sharing. Third party interfaces often will not result in total functionality of linked modules. Inter-agency and multi-jurisdictional information sharing is also troublesome. The ability to share information between agencies, disciplines, and jurisdictions is critical in today's world.

Boone County and the agencies it supports with CAD deserve a quality system not hampered by its own limitations.

G. Dan Beckman

Columbia Police Department, RMS Project Manager
Site Visit to Guilford Metro 911 – SunGard

SunGard is a very professional CAD system that is part of an all-inclusive suite of modules made to handle the public safety needs for reporting, dispatching, tracking, monitoring, and recording of data. SunGard One Solution provides the ability to handle all the needs of the public safety agencies in



Boone County. This is a state of the art system built by SunGard's own developers driven by user demand.

With every new CAD, RMS, JMS, or Mobile Product comes a need for additional training and initial install complications. Given the growing population of Boone County and our needs to manage multiple agencies and disciplines, it is in our best interest to use a single source system. Systems which require third party modules to piece meal the needs of all agencies is troublesome by its very nature. Interfacing with these types of systems is costly and maintenance is difficult over time. These are not problems SunGard One Solution has. SunGard one solution is built by SunGard and each module is built to work with the other module. This is a windows based system making it user friendly to both navigate and perform advanced query searches.

SunGard One Solution links key information, people, and devices that are critical to effective communications across all disciplines of public safety. In this day and age, information sharing is key to quality service performed by public safety agencies. SunGard makes information sharing between agencies and jurisdictions accessible and convenient.

H. Jake Waller, NRP, EMS Supervisor
University of Missouri Ambulance Service

Aron,

Attached are the scanned scoring sheets we filled out, as well as the reimbursement sheet with my information filled in. Let me know if you need for me to fill in more than Section G. I don't think you do, but I can. My overall opinion of both systems is that EnRoute is better suited to our needs as is, but that SunGard can be as well if they tailor a few things to fit our unique system. Honestly, I feel much better about SunGard as a product after seeing it in action but still think it is less efficient "off the shelf" when compared to the EnRoute product. Thanks again Aron!



Appendix 2 – Vendor Questionnaires

A. SUNGARD PUBLIC SAFETY SECTOR

TO: Fred Johnson – SunGard Public Safety Systems
From: E. Frank Kirk, Senior Consultant/Project Manager
Re: Boone County, MO Computer Aided Dispatch Project
Date: August 17, 2015

During the past several months the Boone County Government has researched various computer aided dispatch systems with the focus on procuring a fully integrated public safety system that includes multiple components designed to enhance first response systems, for the County, City of Columbia and surrounding municipalities.

Two vendors have presented product demonstrations to educate Agency Users, County Information Technology staff and others with the purpose of identifying factors that may be used during the recommendation and selection process.

In order to complete this process the following questions are being provided to both vendors to verify specific discussion during the recent product demonstrations.

It must be noted that each vendor's final proposal shall include statements reflecting questions detailed in this document that were responded to with a Yes answer or otherwise requested additional information, specifically question 3.a, 8.a and question 9.

Please review the questions below and provide your response by COB Friday, August 21, 2015.

1) Please provide the specific components proposed in the Boone County CAD project.

- | | | | | |
|---|-------------------------------------|-----|--------------------------|----|
| a) Computer Aided Dispatch | <input checked="" type="checkbox"/> | Yes | <input type="checkbox"/> | No |
| b) Mobile Field Reporting | <input checked="" type="checkbox"/> | Yes | <input type="checkbox"/> | No |
| c) Mobile Computing System | <input checked="" type="checkbox"/> | Yes | <input type="checkbox"/> | No |
| d) Interface to Firehouse Reporting | <input checked="" type="checkbox"/> | Yes | <input type="checkbox"/> | No |
| e) Two-way interface to Firehouse Reporting | <input checked="" type="checkbox"/> | Yes | <input type="checkbox"/> | No |
| f) Station Alerting/Paging | <input checked="" type="checkbox"/> | Yes | <input type="checkbox"/> | No |
| g) Automatic Vehicle Location | <input checked="" type="checkbox"/> | Yes | <input type="checkbox"/> | No |

2) Does SunGard, in its proposal to Boone County, provide a fully integrated system that interfaces with all associated components? Yes No



3) Does SunGard provide and maintain all components identified in the Boone County Proposal? Yes No

a) If not, please identify any third party components by name and describe the method to interface with the component provider.

Component N/A
Provider Name N/A
Interface Method N/A

4) Does SunGard provide all interfaces that may be required to integrate all components of the proposed system? Yes No

5) Does SunGard integrate/interface with the SunGard Records Management System currently being purchased by the Columbia Police Department?

Yes No

6) Does SunGard fully integrate/interface with the SunGard Jail Management system currently utilized by the Boone County Sheriff's Department?

Yes No

7) Does SunGard have the capability to interface and provide response and other related information to Smartphones, iPads and other tablets?

Yes No

8) Will the SunGard CAD system require new response run cards to be created?

Yes No

a) If so what do you estimate the time required to complete response run cards?

We will handle the new response cards as part of the system buildout. Estimated 24-48 hours depending how many.

9) From time of contract signage, what is the estimated time until the SunGard System, including all associated components can "go live" with full implementation?

We are currently estimating 12 to 18 months.

10) Will Boone County be required to create interfaces or take action to integrate the SunGard system with county system(s)? Yes No



B. INFOR/ENROUTE SYSTEM RESPONSE

TO: Margaret Moran, Vice President, Public Safety – Infor/EnRoute Public Safety Sector
From: E. Frank Kirk, Senior Consultant/Project Manager
Re: Boone County, MO Computer Aided Dispatch Project
Date: August 17, 2015

During the past several months the Boone County Government has researched various computer aided dispatch systems with the focus on procuring a fully integrated public safety system that includes multiple components designed to enhance first response systems, for the County, City of Columbia and surrounding municipalities.

Two vendors have presented product demonstrations to educate Agency Users, County Information Technology staff and others with the purpose of identifying factors that may be used during the recommendation and selection process.

In order to complete this process the following questions are being provided to both vendors to verify specific discussion during the recent product demonstrations.

It must be noted that each vendor's final proposal shall include statements reflecting questions detailed in this document that were responded to with a Yes answer or otherwise requested additional information, specifically question 3.a, 8.a and question 9.

Please review the questions below and provide your response by COB Friday, August 21, 2015.

- 1) Please provide the specific components proposed in the Boone County CAD project.

a) Computer Aided Dispatch	<u> X </u>	Yes	<u> </u>	No
b) Mobile Field Reporting	<u> </u>	Yes	<u> X </u>	No
c) Mobile Computing System	<u> X </u>	Yes	<u> </u>	No
d) Interface to Firehouse Reporting	<u> X </u>	Yes	<u> </u>	No
e) Two-way interface to Firehouse Reporting	<u> X </u>	Yes	<u> </u>	No
f) Station Alerting/Paging	<u> X </u>	Yes	<u> </u>	No
g) Automatic Vehicle Location	<u> X </u>	Yes	<u> </u>	No

- 2) Does Infor EnRoute, in its proposal to Boone County, provide a fully integrated system that interfaces with all associated components?

<u> X </u>	Yes	<u> </u>	No
--------------	-----	---------------	----

- 3) Does Infor EnRoute provide and maintain all components identified in the Boone County Proposal?

<u> X </u>	Yes	<u> </u>	No
--------------	-----	---------------	----



- a) If not, please identify any third party components by name and describe the method to interface with the component provider.

We are not providing Mobile Field Reporting and have assumed an Interface with SunGard for that.

Component Provider Name _____
Interface Method _____

- 4) Does Infor EnRoute provide all interfaces that may are required to integrate all components of the proposed system? Yes No
- 5) Does Infor EnRoute integrate/interface with the SunGard Records Management System currently being purchased by the Columbia Police Department? Yes No

Yes we will integrate/interface with the city PD system when it is on line.

- 6) Does Infor EnRoute fully integrate/interface with the SunGard Jail Management system currently utilized by the Boone County Sheriff's Department? Yes No

We have not been asked to interface with the SunGard Jail Management System. We can, but are not sure what CAD data they are looking for. We will need full specifications regarding this interface.

Response: We have not asked that question of SunGard, our primary intent is to assure each vendor that we are open and nonbiased and therefore have not requested any cross vendor information. Does the current EnRoute CAD interface with the County RMS or JMS products? The County has not made a decision regarding changing their current RMS or JMS packages.

- 7) Does Infor EnRoute have the capability to interface and provide response and other related information to Smartphones, iPads and other tablets? Yes No
- 8) Will the Infor EnRoute CAD system require new response run cards to be created? Yes No



a) If so what do you estimate the time required to complete response run cards?

Typically 4 to 6 weeks after response forms training. It depends on the resources the County has. This time includes planning and collaboration. Actual build is about a weeks' time.

9) From time of contract signage, what is the estimated time until the Infor EnRoute System, including all associated components can "go live" with full implementation?

6 to 8 months.

10) Will Boone County be required to create interfaces or take action to integrate the Infor EnRoute system with county system(s)? Yes No

All Interfaces within the contract will be maintained under support by Infor. Infor can also be contracted to design and write other interfaces the county may need at a later time.



Appendix 3 – Master CAD Off-Site Scorecard

The Master CAD Off-Site Scorecard spreadsheets can be found at the following link:

https://mcp.egnyte.com/dl/bvpLzChbXP/Master%20CAD%20Off-site%20visit%20Scorecard_19JAN2016_FINAL.pdf



Appendix 4 – SWOT Analysis

SWOT Analysis - A vital aspect of the selection process is performing a SWOT analysis. A SWOT analysis is a structured planning process used to evaluate the strengths, weaknesses, opportunities and threats involved in a project.

SunGard Public Sector SWOT Analysis

Strengths

- SunGard proposes a fully integrated CAD system to include mobile field reporting, AVL, mapping, mobile data, integration with SunGard Records Management Systems
- Proposed system includes all requested components in a single solution
- SunGard utilizes a Roadmap concept to enhance their system with users contributing to enhancements
- System enhancements costs are spread across entire SunGard customer base with each agency deciding if they want to include enhancements in their local product
- Systemwide enhancements are delivered at no cost
- Corporate management allows user agency input in enhancements and spreads the costs of unique enhancements over the number of users who also want the specific enhancement
- SunGard provides strong coordinated leadership with immediate access to programming staff and help desk
- Single contact point for all components included in the ONESolution system
- Bi-directional interface with the Firehouse RMS (for Fire Departments)
- More robust integration with CPD's SunGard RMS
- The ability to go "en route" and "on scene" automatically in order to improve timestamps and save on radio traffic is beneficial for fire and EMS

Weaknesses

- Software program change can be complex
- Operators may have a steep learning curve to adapt to new system
- Field personnel may have issues with transitioning to new systems
- Training staff will require retraining on new products

Opportunities

- Procurement of the ONESolution program creates an integrated system that will allow enhancements to be made simultaneously without interface maintenance
- SunGard ONESolution will provide expandability into the future
- SunGard ONESolution is fully integrated to the SunGard RMS software
- Additional components including SunGard's new Frontier Smartphone Application are available to receive CAD information on their phones. This is a benefit for volunteer agencies



Threats

- Operators may reject the system change and moral may be impacted
- There will be mistakes that may impact operations during the transition process
- System implementation may be over a 12-14 month period
- Field software and equipment change will be required

EnRoute SWOT Analysis

Strengths

- Infor/EnRoute CAD is the current vendor and a relationship exists with between the County and the vendor
- Training and familiarization for the Telecommunicators and BCJC staff would require less time and effort as they are already comfortable with the look and feel of the overall product and would only have to embrace the minor changes of the upgraded system

Weaknesses

- CAD system is not fully integrated
- Multiple interfaces will be required to connect various third party components resulting in annual maintenance license costs and county labor to create and maintain multiple interfaces
- Mobile product is not favored by Cypress Creek. They discarded the EnRoute mobile product for a local third party solution
- System does not offer all components requested
- System does not have an active interface with SunGard Records Management System
- EnRoute would not respond to questions regarding interface to the SunGard RMS until the recent interview and question/answer conference call

Opportunities

- Infor/EnRoute continues CAD relationship with Boone County
- Morale may not be impacted if the current system is maintained

Threats

- The Infor/EnRoute system does not project to be adaptable to other components without using interfaces
- Inability to provide a system that will interact with the City of Columbia and Boone County RMS programs

CERTIFIED COPY OF ORDER

STATE OF MISSOURI

}

ea.

February Session of the January Adjourned

Term. 20 16

County of Boone

In the County Commission of said county, on the

2nd

day of

February

20

16

the following, among other proceedings, were had, viz:

Now on this day the County Commission of the County of Boone does hereby submit and approve the following resolution in support of the University of Missouri:

This resolution is intended to convey the sincere and strong interest the undersigned have in supporting the University Of Missouri as a statewide institution and asset of all Missourians. The Columbia Campus and its students from every Missouri County, every state and the world is an important financial component of the entire state of Missouri, especially the local area including but not limited to the City of Columbia, the County of Boone and the surrounding counties of Cole, Moniteau, Cooper, Howard, Randolph, Audrain, and Callaway.

Whereas the University of Missouri was established by the people of the State of Missouri and derives its existence from the Constitution of the State and;

Whereas the University of Missouri is the land grant college dedicated to improving the lives of the citizens of the State, and;

Whereas it has fulfilled this important responsibility for decades, and;

Whereas the beneficial effect of the University of Missouri upon the entire state is incalculable but includes the education of more than 300,000 living graduates in every profession and vocation,

Whereas the extension service has provided essential training in agriculture and other vocational areas to thousands of other Missourians, and;

Whereas the economy of the state and particularly the central part of the state is inextricably tied to the continued viability and success of the University, and;

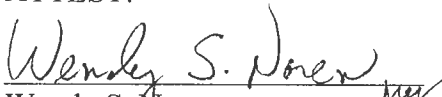
Whereas the University of Missouri is the largest employer in the Central part of the state, and;

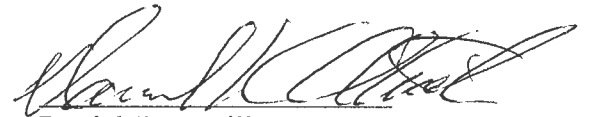
Whereas, recent advancements in many areas such as nuclear medicine and improvements in nuclear power plant design can and likely will have worldwide impact if research and development are continued:

Now therefore, we the undersigned, both personally and in our representative capacities, acknowledge the University is struggling with its stewardship role as the flagship campus for the State of Missouri. We respectfully request that our elected representatives recognize the great value of the University of Missouri and its essential educational and financial contributions. We request they exercise their authority in such manner as to continue adequately funding this important component of the economy of Central Missouri and cause no harm to its staff, students, and hard working families.


Done this 2nd day of February, 2016.

ATTEST:


Wendy S. Noren
Clerk of the County Commission



Daniel K. Atwill
Presiding Commissioner



Karen M. Miller
District I Commissioner



Janet M. Thompson
District II Commissioner